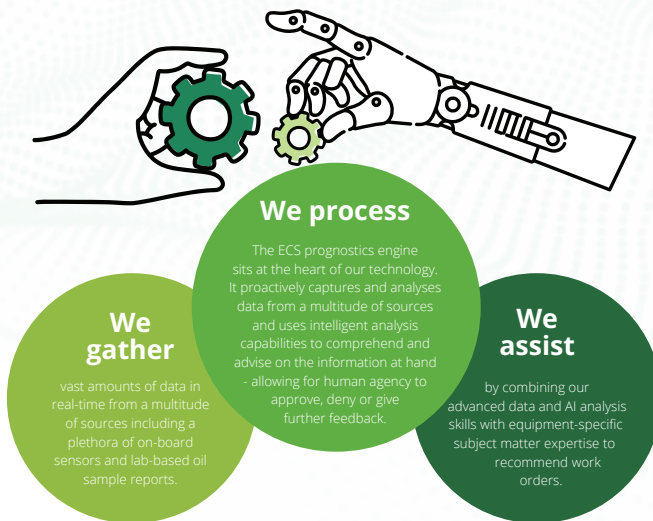


Equipment Condition Supervisor

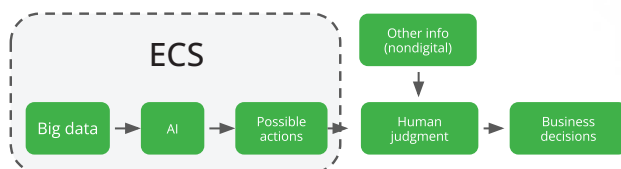
ECS is made for Reliability Engineers who are responsible for identifying and managing risks that affect asset reliability and business operations.

We combine industry-leading data analysis with human-input in order to offer a condition monitoring capability that can be trained and tailored.

Our mission is to equip maintenance and reliability teams with the ability to make a tangible difference to equipment reliability and productivity. We do this by eliminating the transactional and manual processes that have typically been a large part of an engineer's analysis work.



ECS uses a decision-making model that combines the power of AI and human judgment.



Bolstered by the power of Deloitte Asset Management Framework



We bring unique combination of sector experience, technology expertise and proven IP and accelerators.

Only Deloitte Australia can generate the right balance of capabilities, experience and unique IP to enable clients to establish a proven and proactive maintenance data recommendations for greater equipment efficiency.

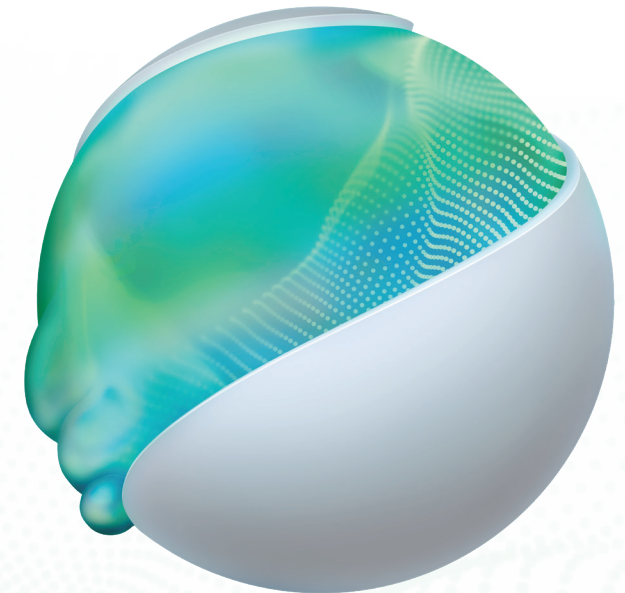
Contact

Gerard Wood
Partner Specialist Asset Management
gewood@deloitte.com.au
m: +61 (0) 417 606 700

Darryl Smith
Director, Consulting
darsmith@deloitte.com.au
p: +61 (0) 282604037



Deloitte.



Equipment Condition Supervisor

The intelligent condition monitoring assistant that works with you to enhance equipment reliability

Why is the condition of critical equipment so, critical?

The benefits of working with Equipment Condition Supervisor.

- ✓ Reduced maintenance costs
- ✓ Enhanced operational outcomes
- ✓ A commitment to sustainability
- ✓ Accurate data analysis
- ✓ A global intelligence network
- ✓ Knowledge gained and shared

ECS Turns Data Into Action



Preemptive
Monitoring Ability

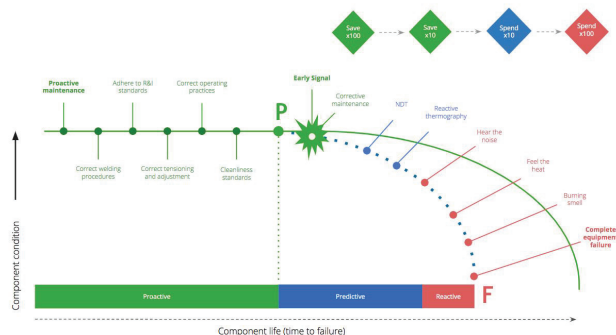


Corrective Work
Orders



Prescriptive
Recommendations

Proactive maintenance in action:



Our achievements

We're proud to say that we've had many of our clients for years and have helped countless organisations move from transactional, manual data collection to proactive condition monitoring led by insights that aim to constantly improve and increase operational productivity.

We are currently used across 17 mine sites in Australia, Panama and Zambia, and in total ECS manages more than 800 mobile mining assets.

World's largest ultra-class truck fleet on trolley

ECS is used to manage one of the world's largest fleets of ultra-class haul trucks. The site is targeting savings of USD 130m over 10 years from major component life extensions through the proactive maintenance approach driven by ECS.

A leading Canadian mining and metals company

Uses ECS across mines and development projects in a range of countries including Zambia and Panama.

A global mining company with a vision of re-imagining mining to improve people's lives

Uses ECS across asset classes including excavating, loading, hauling, drilling and ancillary equipment.

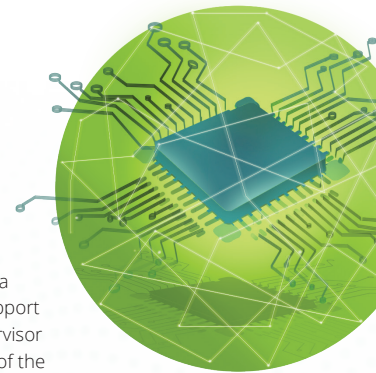
Copyright © 2023 Deloitte Touche Tohmatsu. All rights reserved.

Did you know?

Artificial intelligence (AI) is the most influential and revolutionary innovation of modern-day business.

At its core, AI refers to the implementation of intelligent machinery capable of performing tasks that would typically require human intelligence and lengthy transactional input. With AI, a machine can perform analytics and decision-making tasks with minimal human intervention.

The role of AI in Equipment Condition Monitoring



The introduction of AI via onboard sensors and fluid sample analysis using a smart condition monitoring decision support engine - like Equipment Condition Supervisor (ECS) - takes time and human error out of the data analysis process. It also locks in the knowledge gained over decades so we don't lose this when people retire.

With ECS, heavy equipment industries benefits from:

A culture of proactive maintenance

Using state-of-the-art data analysis software our focus is on providing proactive maintenance recommendations. This means we're able to identify and fix the drivers behind potential equipment failure before they even happen. We get to the root cause and provide engineers with the recommendations they need before they even know they need them.

An assistant engineer

Beyond technology, we offer a partnership. Our focus is on providing recommendations and learnings that assist our clients and learn from their input. Think of us as a supervisor that never sleeps and instead, just keeps watching, working and learning.