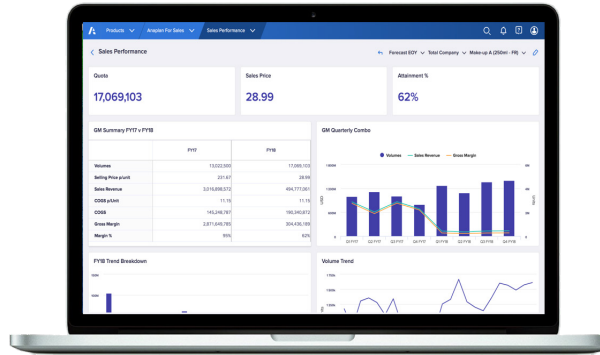


# Finance Transformation

Anaplan's Finance Transformation in Insurance Solution provides a comprehensive set of functionalities to meet Insurance CFO's transformation objectives driven by regulatory changes such as IFRS17, the digital disruption of the industry and the changing role of the Finance function in Insurance. The solution addresses a large set of use cases spanning from IFRS17 compliance, statutory and management reporting, FP&A, costing, Business Plans and Zero-Based Budgeting.



## There's a new way to plan

Leverage the combined power of technology and people to make the most of natural connections that already exist in your organization.

Connected Planning ensures that your strongest people use the best available data to make better-informed decisions.

**It's Dynamic** – Change as the market changes...or even faster

**It's Collaborative** – Involve all the right people in decisions – even your customers

**It's Intelligent** – Leverage internal and external data to unlock predictive insights

## Key benefits

- In the area of compliance, the solution helps achieve one single version of the truth, faster production cycles and more forward-looking reporting
- The solution also helps drive a profitable growth agenda in delivering better insights on the profitability by lines of business and products and supporting decisions to reallocate investments towards higher returns
- Finally, the solution makes Finance a more strategic function by driving value beyond the IFRS17 compliance process and empowers Finance as a change agent to implement the transformation

## CUSTOMER STORY



Unum is a composite US insurer providing life, general and health insurance services to 36 million people

Facing numerous challenges with their Group Planning processes, Unum delivered a company-wide finance transformation leveraging its Anaplan connected planning platform.

## Benefits

- Drastic simplification of their FP&A architecture
- Significant productivity improvement across the financial planning function
- One version of the truth
- Executive sponsors trust the platform to deliver high value in Finance and beyond

“Increasingly, value isn't driven by knowing how things work. It's driven by knowing how things work together.”

Group CFO, Unum

## Key features

### Financial Planning and Analysis

- Full insurance P&L planning and forecasting
- Driver-based premium modelling and forecasting
- Claims, commissions and expenses planning
- Cash-flow forecasting for GI (IFRS17)
- CSM Projections (IFRS17)

### Business Plan

- Projections of the financial statements and KPIs over the next 3-5Y (GI) & 10-20Y (Life)
- Leverage actuarial assumptions for the modeling of the financial plans
- Collaboration capabilities of the platform provide consistency in the business plans, sourcing data from various teams

### IFRS17 compliance

- CSM, RA and BEL calculations based on PAA and BBA (GMM and VFA) approaches
- Generation of the IFRS17 journal entries and financial statements
- End-to-end traceability from Policy level to Unit of Account to Financial Statements
- Scenario analysis, impact assessments of a price change or launch of a new product

### Cost Allocations

- Driver-based cost allocations by lines of businesses and products
- Activity-Based Costing
- Waterfall allocations
- Provide automation and transparency in the cost allocation process

### Zero-Based Budgeting

- ZBB methodology enabler applied to G&A planning
- Codify expense policy into Anaplan
- Expense Plans based on demand and actions
- Drive cost savings that can be reinvested in areas of high returns

### Statutory and Management Reporting

- Statutory and Management consolidations of the actuals, budgets and forecasts
- Audit trail, controls and workflow
- Variance Analysis and versioning

## About Anaplan

Anaplan is driving a new age of connected planning. Large and fast-growing organizations use Anaplan's cloud platform in every business function to make informed decisions and drive faster, more effective planning processes. Anaplan also provides support, training, and planning transformation advisory services. To learn more, visit [anaplan.com](https://anaplan.com).

## Key features of the Anaplan platform

### Planning at scale:

Enterprise-grade scale with a cloud-native platform and patented in-memory Hyperblock™ engine.

### Voice to your data:

One location for all of your planning data that is trusted, connected, and the latest.

### Runs your business:

Unmatched flexibility to model any scenario for the business and by the business.

### A team sport:

Engaging, collaborative, and actionable user experience.

### Safeguarding your present and future:

Robust protection through user access, identity management, and data encryption.

### Your competitive advantage:

Embedded intelligence and optimization to drive insights that matter.