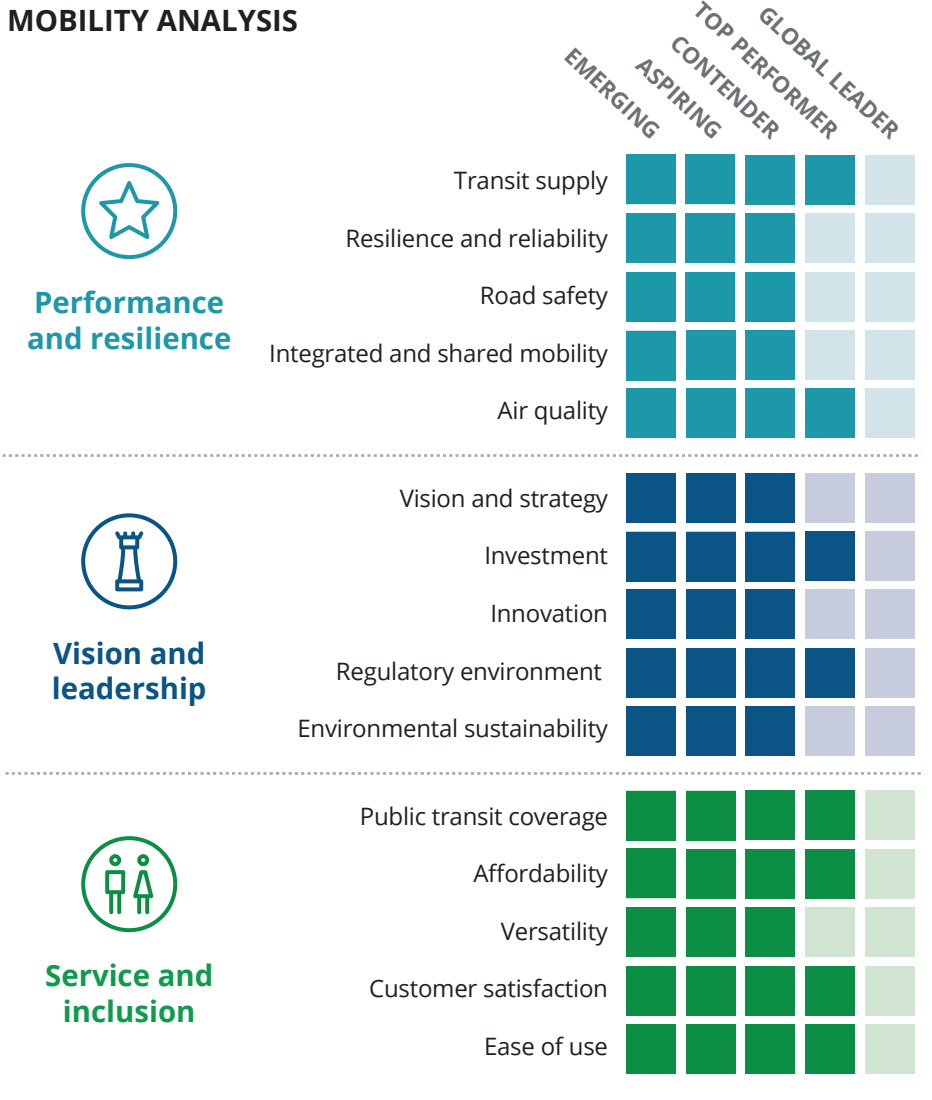


Analysis area

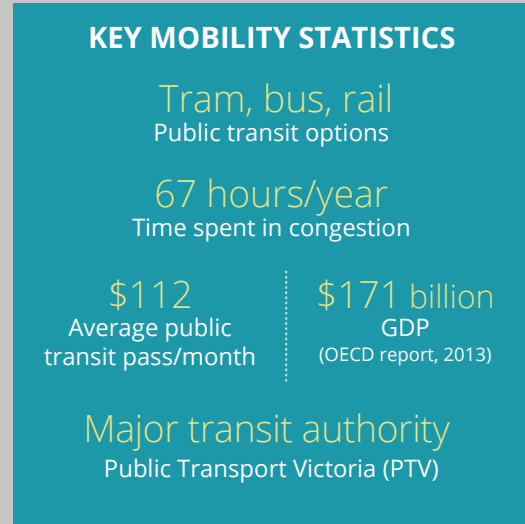
Analysis area: 2,705 km² | Population: 4,485,211 (2016) | Population density: 1,658/km²

Definition of analysis area: Melbourne Urban Centre and Locality area as defined by Australian Bureau of Statistics

MOBILITY ANALYSIS

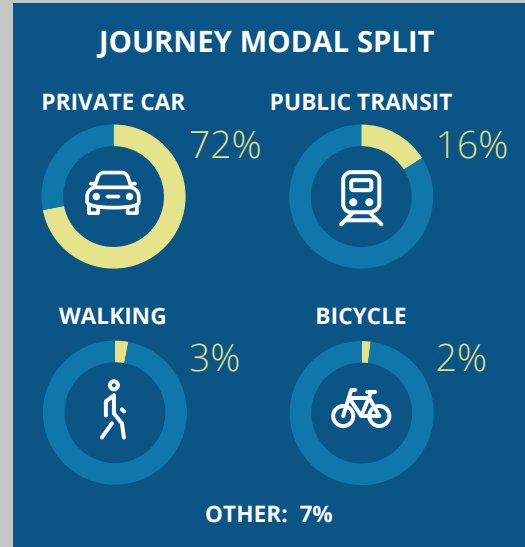


KEY MOBILITY STATISTICS



Note: All dollar amounts are in USD.

JOURNEY MODAL SPLIT



FUTURE OF MOBILITY ANALYSIS

Melbourne



STRENGTHS

- A number of open data portals and APIs on transport metrics available
- Interregional trials of autonomous vehicles (AVs) with new legislation planned
- Existing smart payments system in place

CHALLENGES

- Few car alternatives and limited modal options in the increasing urban region
- Large urban sprawl makes it hard to achieve infrastructure development across the urban area
- Expensive public transportation system as compared to other cities

Key focus areas to improve city mobility and realize the Future of Mobility:



MOBILITY ANALYSIS FURTHER DETAILS:

 **Performance and resilience**

Melbourne is struggling to meet demand for public transportation; trains are overcrowded. Moreover, high use of private vehicles causes road congestion and high emissions.

- Demand for public transit options: The city has witnessed a 70 percent and 30 percent increase in demand for heavy rail and light rail, respectively, in the last decade.
- Poor public transit performance: The public transit system is overcrowded and subject to frequent breakdowns and delays.
- Too many cars: In response to Melbourne’s dependency on private cars and growing congestion, in 2017 the state government introduced a traffic congestion charge and increased the parking tax to 70 percent.

 **Vision and leadership**

Melbourne has a clear transportation strategy to tackle its challenges, particularly around private car dependency, by 2030.

- Average sustainability scores: High car use was behind these numbers, but the city’s initiatives to increase active travel modes are working; cycling in inner Melbourne doubled between 2001 and 2011.
- AV buy-in: Melbourne is embracing a future with autonomous vehicles. Beginning in 2017, it plans to test AVs on city roads for two years.
- Electric vehicle (EV) adoption is slow: Barriers include low infrastructure readiness, the high purchase price, and a lack of government subsidies.

 **Service and inclusion**

Melbourne has excellent security and an easy-to-use transport network. Yet affordability and inclusivity are low and may prevent many citizens from accessing a range of employment options.

- Low affordability: The high cost of fuel leads to the city ranking low on affordability; this is compounded by a relatively expensive public transport system.
- Inadequate accessibility: The geographic spread of the greater urban area is only partially covered by reliable public transit.
- Customer satisfaction: Levels are high, reflecting a secure and easy-to-use network, but one that is not necessarily accessible by all.

SUMMARY

Similar to other Australian cities, Melbourne faces the challenges of large urban sprawl and an underdeveloped public transport system that has led to a car culture and the resultant congestion. The existing public transit system provision has a number of flaws: It is unreliable and suffers many breakdowns and delays; it also lacks sufficient geographic coverage to reach all citizens and it is expensive.

Melbourne has acknowledged its challenges and is preparing to resolve them with an ambitious program of investments in infrastructure. When combined with a supportive regulatory environment, these investments can help place Melbourne at the forefront of the Future of Mobility.

CONTACTS

Simon Dixon
Global Transportation leader
Partner
Deloitte MCS Limited
Tel: +44 (0) 207 303 8707
Email: sidixon@deloitte.co.uk

Haris Irshad
Strategy & Operations
Senior manager
Deloitte MCS Limited
Tel: +44 7879 487623
Email: hirshad@deloitte.co.uk

Paul Mountney
Infrastructure Advisory & Contestability
Partner
Deloitte Financial Advisory Pty Ltd
Tel: +61 (3) 9671 6253
Email: pmountney@deloitte.com.au

About the Deloitte City Mobility Index

The Deloitte City Mobility Index reviews major cities on key aspects of mobility and the resulting relationship to economic performance. Drawing on publicly available data, client conversations, and bespoke Deloitte analyses, we assess each city’s ability to transport its citizens both now and in the future and therefore its potential to bring prosperity to the city.

As we receive feedback, we will update and expand the analysis, which may mean the results shown in this document may change.

For the full interactive index, visit the Deloitte City Mobility Index at deloitte.com/insights/mobility-index.

For Deloitte’s insights on the Future of Mobility, visit deloitte.com/insights/future-of-mobility.

About this publication

This publication has been written in general terms and we recommend that you obtain professional advice before acting or refraining from action on any of the contents of this publication. Deloitte MCS Limited accepts no liability for any loss occasioned to any person acting or refraining from action as a result of any material in this publication.

About Deloitte

Deloitte MCS Limited is registered in England and Wales with registered number 03311052 and its registered office at Hill House, 1 Little New Street, London, EC4A 3TR, United Kingdom.

Deloitte MCS Limited is a subsidiary of Deloitte LLP, which is the United Kingdom affiliate of Deloitte NWE LLP, a member firm of Deloitte Touche

Tohmtatsu Limited, a UK private company limited by guarantee (“DTTL”). DTTL and each of its member firms are legally separate and independent entities. DTTL and Deloitte NWE LLP do not provide services to clients. Please see www.deloitte.com/about to learn more about our global network of member firms.

© 2018 Deloitte MCS Limited. All rights reserved.