

OECD Pillar One and Pillar Two tax advisory service

An integrated approach to help you evaluate potential impact

What is Pillar One and Pillar Two?

On 10 July 2021, the G20 members endorsed the key components of the two-pillar approach to international tax reform that was endorsed by 137 member jurisdictions, constituting the vast majority of the OECD/G20 Inclusive Framework on Base Erosion and Profit Shifting (BEPS). Each of the two pillars addresses a separate concern.

Pillar One targets the largest multinational groups focusing initially on those with at least EUR 20 billion of consolidated revenue and net profits in excess of 10% (i.e., profits before tax to revenue) and will require them to pay tax in the locations where their customers and users are located. A formulaic approach will be used to allocate a percentage of profits between each jurisdiction. Pillar One should effectively require in scope multinationals to pay at least some tax in the markets they interact with.

Pillar Two, the key components of which are commonly referred to as the “global minimum tax” or “GloBE,” introduces a minimum effective tax rate of at least 15%, calculated based on a specific ruleset. Groups with an effective tax rate below the minimum in any particular jurisdiction would be required to pay top-up tax to their head office location. The tax would be applied to groups with revenue of at least EUR 750 million, making it far more widely applicable than Pillar One. The OECD/G20 Inclusive Framework on BEPS published the ‘Global Anti-Base Erosion Model Rules (Pillar Two)’ (Pillar Two Model Rules) on 20 December 2021.



The global minimum tax attempts to limit tax competition by introducing a globally uniform floor, below which the effect of low tax rates or fiscal policy measures would be largely obviated.

Service Highlights

Covers Pillar One and Pillar Two

Calculates Amounts A and B of Pillar One and the minimum taxes imposed by the Income Inclusion Rule and the Undertaxed Payments Rule (also known as Undertaxed Profits Rule) of Pillar Two.

Develop scenarios

Used to identify impacts and insight into the different ways Pillar One and Pillar Two may unfold.

Excel-based

The ability to upload data through Excel files allows for a nimble, flexible and customizable solution.

Intuitive visuals

Visualized dashboards tell the story of how the proposals may affect your tax position.

Simple inputs

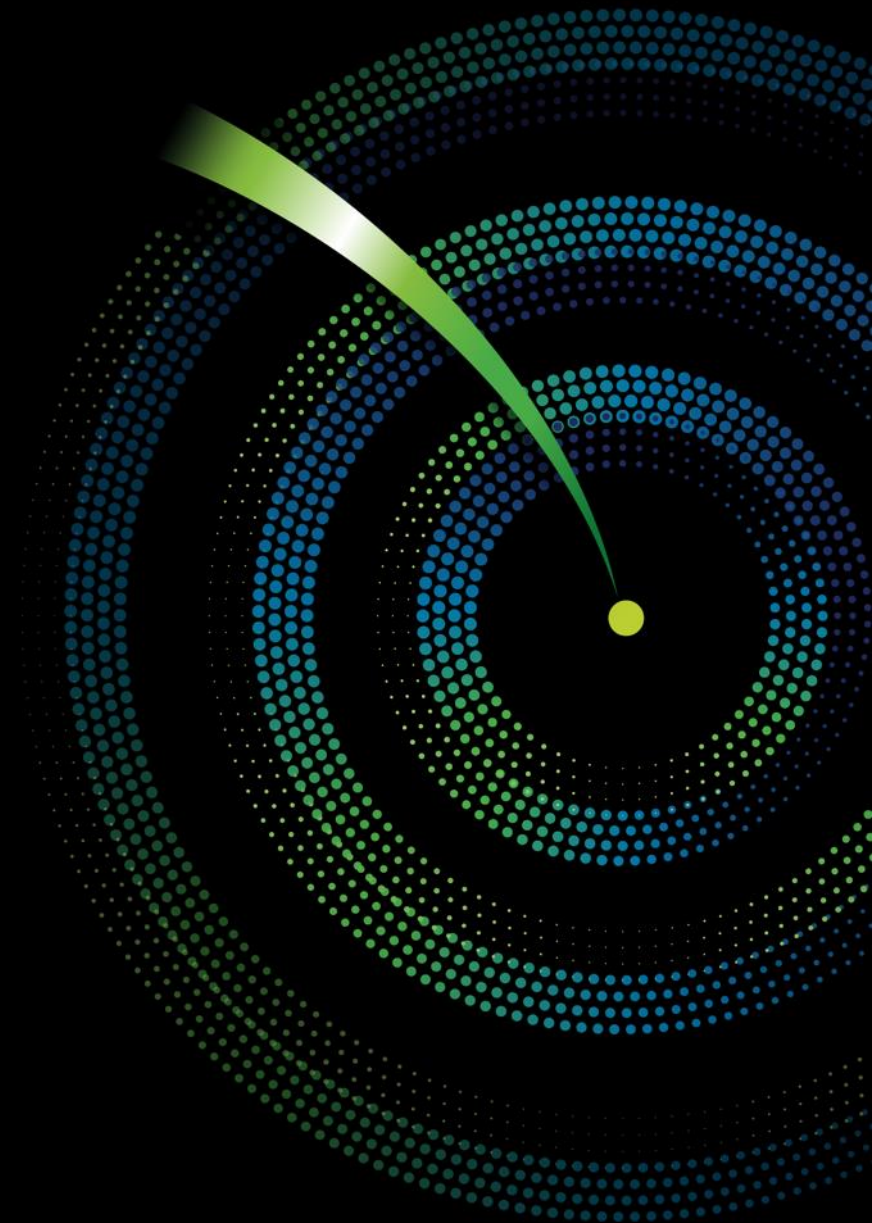
Supports flexibility in the inputs, starting with country-by-country reporting (CbCR) and other easily-accessible data, and having an option to further refine the modeling with additional data.

Default selections

Default selections included for most of the Pillar One and Pillar Two assumptions based on certain public comments made by governmental agencies in various countries and other by stakeholders. Inputs may be tailored based on specific facts and circumstances.

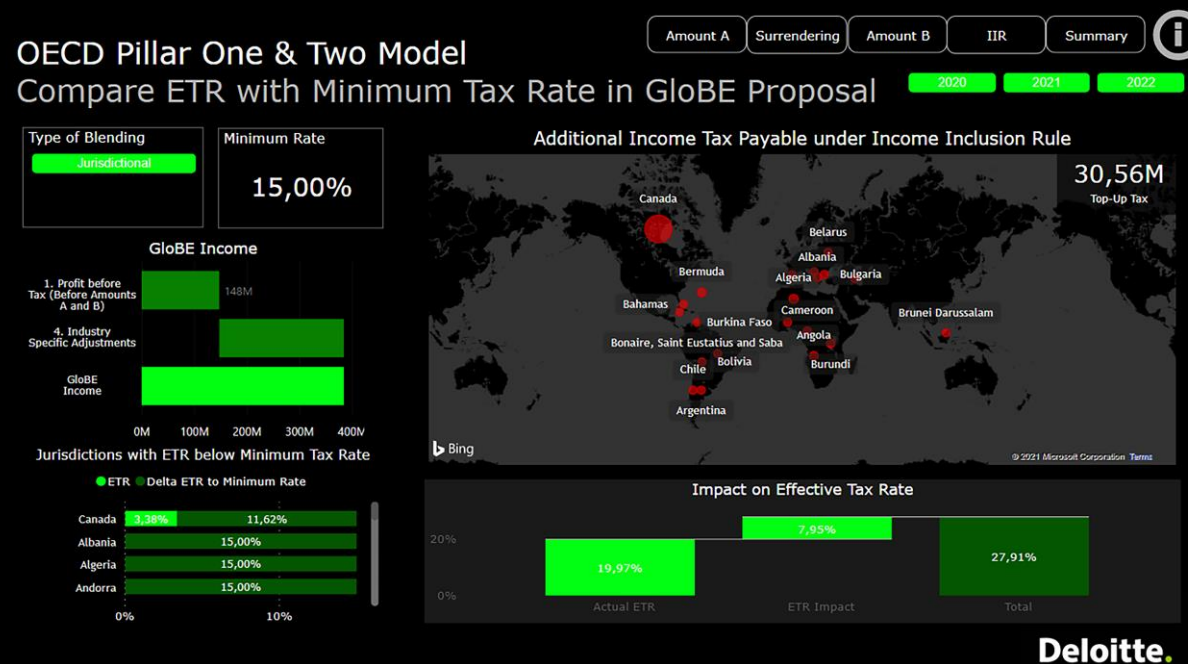
Built-in flexibility

Due to uncertainties in the OECD proposals, our approach builds in alternative interpretations of the guidelines.



The solution: An integrated advisory approach

The Deloitte OECD Pillar One and Pillar Two tax advisory service offering combines the deep expertise of our leading Deloitte tax specialists with the analytical power of our technology solution to help companies assess and evaluate the potential implications of Pillar One and Pillar Two on their tax profile.



Assess the impact of Pillar One and Pillar Two

Use the inbuilt calculator to calculate Amount A and relocate a share of residential profit to your market jurisdictions.

Customize your data set

Evaluate the impact of different scenarios by customizing your data set.

Easy scenario planning

Save and compare various scenarios and datasets.

Calculate GloBE income

Quickly compare effective tax rate (ETR) with Minimum Tax Rate in GloBE Proposal.

Why Deloitte?

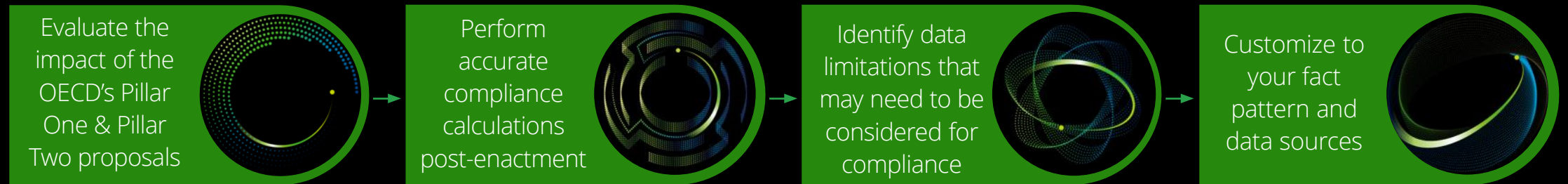
Technical experience

Deloitte dedicated global tax policy teams closely monitor both the OECD and local - country developments. They support client service teams to provide meaningful and insightful scenario planning, while bringing the strategic perspective from their broad combined experience.

Understanding your business and industry

The impact of Pillar One & Pillar Two on multinationals can vary by industry. Similarly, the impact is affected by different transfer pricing footprints. Deloitte's tax professionals have a robust understanding of industry-specific issues, and the implications for on your business and your global transfer pricing footprint. By teaming with you, we can help you to make informed assumptions about Pillar One and Pillar Two and explore future mitigations and opportunities.

Service benefits





Deloitte refers to one or more of Deloitte Touche Tohmatsu Limited (“DTTL”), its global network of member firms, and their related entities (collectively, the “Deloitte organization”). DTTL (also referred to as “Deloitte Global”) and each of its member firms and related entities are legally separate and independent entities, which cannot obligate or bind each other in respect of third parties. DTTL and each DTTL member firm and related entity is liable only for its own acts and omissions, and not those of each other. DTTL does not provide services to clients. Please see www.deloitte.com/about to learn more. Deloitte is a leading global provider of audit and assurance, consulting, financial advisory, risk advisory, tax and related services. Our global network of member firms and related entities in more than 150 countries and territories (collectively, the “Deloitte organization”) serves four out of five Fortune Global 500® companies. Learn how Deloitte’s approximately 330,000 people make an impact that matters at www.deloitte.com. This communication contains general information only, and none of Deloitte Touche Tohmatsu Limited (“DTTL”), its global network of member firms or their related entities (collectively, the “Deloitte organization”) is, by means of this communication, rendering professional advice or services. Before making any decision or taking any action that may affect your finances or your business, you should consult a qualified professional adviser. No representations, warranties or undertakings (express or implied) are given as to the accuracy or completeness of the information in this communication, and none of DTTL, its member firms, related entities, employees or agents shall be liable or responsible for any loss or damage whatsoever arising directly or indirectly in connection with any person relying on this communication. DTTL and each of its member firms, and their related entities, are legally separate and independent entities.

© 2022. For information, contact Deloitte Global.’

Designed by CoRe Creative Services. RITM0851480

Deloitte Global Offering Leaders

Michael Steinsaltz

International Tax Clients
& Industries Leader
Deloitte Global
msteinsaltz@deloitte.com

Firas Zebian

Tax Principal
Deloitte Tax LLP
fzebian@deloitte.com

Ryan Duchene

Tax Managing Director
Deloitte Tax LLP
rduchene@deloitte.com

Miano Maina

Tax Senior Manager
Deloitte Tax LLP
rmaina@deloitte.com

Global Major Policy Reform Leaders

Bob Stack

Major Policy Reform
Co-Leader,
Deloitte US
bstack@deloitte.com

Alison Lobb

Major Policy Reform
Co-Leader,
Deloitte UK
alobb@deloitte.co.uk