



Cyber Incident Readiness, Response, and Recovery (CIR3)

Building trust. Seizing the advantage.

Embed trust across your customers, businesses, and partners with Deloitte's CIR3. In a converged set of globally positioned capabilities, we help you prepare for, respond to, and recover from cybersecurity incidents with confidence, safeguarding your data, systems, and reputation at speed and scale. Our deep industry knowledge, market-leading technology, global reach, and award-winning network of incident readiness, response, and recovery professionals mean you can better manage and emerge from an incident more resilient than before.



The challenge

Cyberattacks are becoming more frequent and more complex. Responding effectively to a cyber incident requires navigating complex response requirements and intricate technologies, as well as increasingly anxious customers/stakeholders and business partners. Being unprepared increases vulnerability and failing to respond swiftly and effectively leads to the potential for extended operational disruption, significant financial impact, loss of customer trust, harm to your brand, and legal liabilities. Resolving these challenges demands a holistic approach to cyber incident resilience.

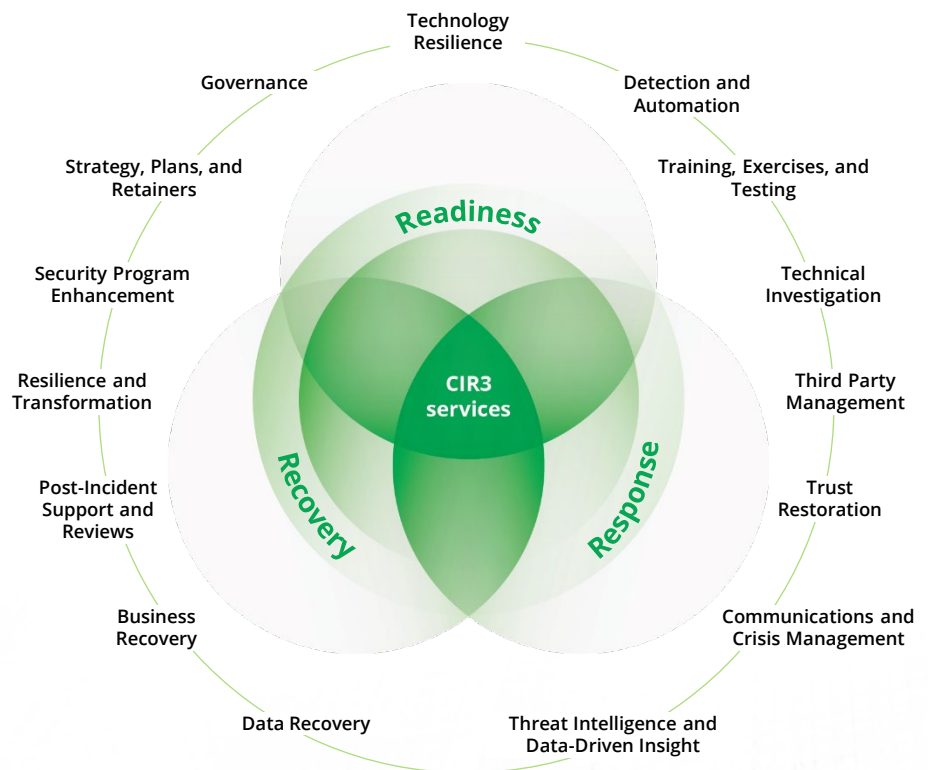
Building trust. Seizing the advantage: Deloitte's CIR3 services

End-to-end cyber readiness, response, and recovery before, during, and after a cyber incident

Incident Readiness: Deloitte will help you define your cyber incident strategy, assess and remediate weaknesses, exercise/train your organization, and adopt advanced technologies to enable your organization to respond to and recover from cyber incidents.

Incident Response: Deloitte can quickly deploy cross functional teams with proven incident response capabilities to investigate and contain the breach, manage third-party activities, support communication, media, and legal strategies, and provide end-to-end services to get back to business fast.

Incident Recovery: Deloitte will manage your recovery by focusing on mission critical services, optimizing longer term recovery across the enterprise, and building a broader organizational resilience. These efforts will reduce legal, brand, customer, and regulatory impacts, while strengthening your organization against future threats.



The CIR3 difference

GLOBAL SCALE AND END-TO-END SERVICES

Global scale and reach with 1,300+ professionals in incident readiness and response, including 300+ forensics specialists, plus 1,000s of professionals in incident recovery

Integrated crisis communications including access to legal advice from the Deloitte Legal network with 2,500 lawyers across 75+ jurisdictions

Cross-functional network of cyber insurance, digital forensics, compliance, and post-incident transformation professionals

Surge services across the entire lifecycle of an incident – cyber incident readiness, response, and recovery – that gets the business back online quickly

DEEP BUSINESS EXPERIENCE

Depth and breadth of knowledge: not just technical specialists, but trusted business and industry specialists who provide targeted advice to mitigate the longer term business impacts of an incident

Deep regulatory, audit, and compliance experience to help navigate cross-border complexities

Financial risk quantification models and specialists to aid in breach materiality determination for regulatory notification decisions

TECHNOLOGY INNOVATION

Data-driven insights derived from millions of hours responding to large-scale global incidents to accelerate detection, identification, and containment

Market-leading technologies and innovation: Deloitte investment in advanced data analytics, artificial intelligence, and other business-critical technologies

Strong vendor ecosystems, cyber insurance relationships, and technology alliances to accelerate response time and minimize impact

CIR3 in action: Aviation Services Company

Threat actor attack

A sophisticated cyber-APT (advanced persistent threat) group targeted a global aviation services company with **ransomware**, paralyzing critical systems

Rapid incident response

Deloitte rapidly deployed a team of **incident response (IR) specialists**, including professionals in legal, crisis communications, and core cyber incident management to contain/remediate the threats

Cross-functional recovery

Concurrently, **experienced infrastructure, application, and data recovery teams** quickly restored business services, closely coordinating with the company and IR teams

Post incident enhancements/readiness

To address security gaps and **enhance resilience**, Deloitte developed a risk-based program to improve incident governance, processes, playbooks, and technology resilience, along with 24x7 threat monitoring

Deloitte's impact

The company emerged from the attack more resilient than before, **transforming to be better prepared to defend against future cyber threats**

Cyber resilience delivered.

With Deloitte's CIR3 services, cyber incident management and recovery is covered end-to-end, delivering what you need to strengthen trust.



Cyber incident resilience: Integrate readiness, response, and recovery activities seamlessly into your business framework, elevating protection and preparedness



Quicker response, faster recovery, reduced business impact: Minimize incident impact, get back to business faster, and prevent future business disruption



Mitigate enterprise risk and financial and operational impact, and ensure you emerge from the breach stronger than before



Enhance confidence in your business and brand: Instill trust in executives, board members, customers, partners, and regulators through unwavering certainty and guidance



Future-ready innovation and transformation: Right-size innovation and transformation investments to enhance business resilience and outpace evolving threats

Get started with Deloitte's CIR3 services

To learn more, visit www.deloitte.com/cir3 or contact our team today.



John Gelinne
Global Cyber Incident Readiness, Response, and Recovery Leader
Managing Director, Deloitte & Touche LLP
jgelinne@deloitte.com

Kevvie Fowler
Global Cyber Incident Response Leader
Partner, Deloitte Canada
kfowler@deloitte.ca

#1

Globally ranked in Security Consulting for **12 consecutive years** based on revenue in Gartner® Market Share report.¹



Named a **leader in Cybersecurity Incident Readiness Services** by IDC MarketScape.²



Named a **leader for Worldwide Managed Detection and Response Services** by IDC MarketScape³

Endnotes

1. Gartner, Gartner Market Share Security Consulting Services, Worldwide, 2022, 14 July 2023. Gartner does not endorse any vendor, product or service depicted in its research publications, and does not advise technology users to select only those vendors with the highest ratings or other designation. Gartner research publications consist of the opinions of Gartner's research organization and should not be construed as statements of fact. Gartner disclaims all warranties, expressed or implied, with respect to this research, including any warranties of merchantability or fitness for a particular purpose. GARTNER is a registered trademark and service mark of Gartner, Inc. and/or its affiliates in the U.S. and internationally and is used herein with permission. All rights reserved.
2. IDC MarketScape: Worldwide Incident Readiness Services 2021 Vendor Assessment, by Craig Robinson and Christina Richmond, November 2021, IDC #US46741420
3. IDC MarketScape: Worldwide Managed Detection and Response (MDR) Services 2024 Vendor Assessment by Craig Robinson, April 2024, IDC #US49006922e.

About Deloitte

Deloitte refers to one or more of Deloitte Touche Tohmatsu Limited ("DTTL"), its global network of member firms, and their related entities (collectively, the "Deloitte organization"). DTTL (also referred to as "Deloitte Global") and each of its member firms and related entities are legally separate and independent entities, which cannot obligate or bind each other in respect of third parties. DTTL and each DTTL member firm and related entity is liable only for its own acts and omissions, and not those of each other. DTTL does not provide services to clients. Please see www.deloitte.com/about to learn more.

Deloitte Legal means the legal practices of DTTL member firms, their affiliates or their related entities that provide legal services. The exact nature of these relationships and provision of legal services differs by jurisdiction, to allow compliance with local laws and professional regulations. Each Deloitte Legal practice is legally separate and independent, and cannot obligate any other Deloitte Legal practice. Each Deloitte Legal practice is liable only for its own acts and omissions, and not those of other Deloitte Legal practices. For legal, regulatory and other reasons, not all member firms, their affiliates or their related entities provide legal services or are associated with Deloitte Legal practices. This communication contains general information only, and none of Deloitte Touche Tohmatsu Limited ("DTTL"), its global network of member firms or their related entities (collectively, the "Deloitte organization") is, by means of this communication, rendering professional advice or services. Before making any decision or taking any action that may affect your finances or your business, you should consult a qualified professional adviser. No representations, warranties or undertakings (express or implied) are given as to the accuracy or completeness of the information in this communication, and none of DTTL, its member firms, related entities, employees or agents shall be liable or responsible for any loss or damage whatsoever arising directly or indirectly in connection with any person relying on this communication. DTTL and each of its member firms, and their related entities, are legally separate and independent entities.

© 2024. For information, contact Deloitte Global.