



Deloitte's e-invoicing and e-reporting Operate service

powered by Thomson Reuters
ONESOURCE Pagero

Empowering your business. Connecting your world.

Global indirect tax compliance is complex—we help you navigate it

Managing e-invoicing and e-reporting globally in today's complex regulatory environment is a growing challenge for many businesses. Organizations must contend with waves of new mandates across the globe, fragmented systems, resource constraints, and growing demands for efficiency, compliance and accuracy. In this environment, the limitations of existing, often manual, processes expose companies to compliance risks, operational inefficiency, and seemingly endless system changes.

Operate with dynamic control

Deloitte and Thomson Reuters® have come together to assist organizations in reimagining and addressing operational challenges. The result is an “end-to-end” service where Deloitte uses market-leading technology from Thomson Reuters ONESOURCE Pagero to facilitate clients' e-invoicing and e-reporting processes alongside their standard indirect tax compliance requirements.

By integrating our services with global technology flexible enough to respond to future developments, enable operational efficiency, and deliver strategic insight, Deloitte helps businesses respond confidently to regulatory changes, streamline operations, and focus on their own priorities.



Deloitte can help address operational challenges:

**01**

Rising costs and a “do-more-with-less” operating model

Indirect tax obligations already demand significant attention. Emerging e-invoicing and real-time digital reporting add further demands, placing pressure on budgets, talent, and timelines. The task is not merely to absorb new requirements, but to meet them while controlling costs and mitigating compliance risk—at a time many companies are potentially facing organizational life events (e.g., restructures). When resources are already stretched, looking to third parties for a managed outsourcing service can help alleviate the burden.

**02**

Increased scrutiny

The digitalization mandates applying to indirect tax will provide tax authorities with the ability to detect non-compliance more effectively. This may result in more automated audits and penalties. Increased digitalization can also make companies more vulnerable to cyber-attacks.

**03**

The diverse and complex regulatory landscape

The countries in which you operate may have varying indirect tax regulatory requirements, and e-invoicing and e-reporting mandates are being introduced at pace. This results in a complex and evolving regulatory landscape, requiring investment in horizon scanning and response.

**04**

The impact on critical processes and multiple functions

Invoicing is a critical financial operation, impacting cash flow and VAT/GST recovery. The evolving requirements for digital reporting, such as with e-invoicing, have broad implications beyond taxation, affecting multiple areas of business operations. These changes may necessitate adjustments across departments including Finance, Accounting, Tax, Sales, and others, resulting in potential structural modifications to existing processes.

**05**

Maintaining data and system consistency across diverse environments

Operating across multiple countries often means relying on a patchwork of ERP platforms and local processes. This diversity can make it challenging to have consistent, high-quality reporting while meeting regulatory demands.

Deloitte can help companies:

1

Stay compliant across jurisdictions:

Deloitte teams help you navigate indirect tax and e-invoicing requirements with continuous support and adaptation to regulatory changes. Using Thomson Reuters ONESOURCE Pagero, we provide up-to-date, multi-jurisdictional coverage of e-invoicing and CTC mandates in more than 80 countries, helping companies comply with both local and international standards.

2

Streamline operations across the business:

Deloitte's e-invoicing operate offering supports client processes end-to-end (compliance, process testing, reconciliations). Our approach uses ONESOURCE Pagero to integrate with multiple ERP and finance systems, creating a unified approach to indirect tax, e-invoicing, and e-reporting. Deloitte also assists with smooth onboarding, integration, and ongoing enhancements, managing the interconnections between the various processes.

3

Gain strategic control and boost efficiency:

Automated reconciliation, real-time validation, and centralized dashboards provide actionable insights and stronger control. Understanding your invoicing landscape helps you and Deloitte identify opportunities for greater efficiency and strategic value, such as using e-invoicing as the catalyst for transformation initiatives or account for indirect tax impacts in wider finance projects.

4

Protect sensitive data with robust security:

Deloitte's and ONESOURCE Pagero's robust security standards provide data integrity and privacy. Deloitte teams deliver ongoing governance and risk management, safeguarding sensitive financial information.

5

Scale effortlessly for future growth:

Deloitte's approach can be applied and scaled as your business grows and as regulations evolve. Deloitte's flexible operate models combined with ONESOURCE Pagero's global interoperability and local tax authority connections help keep your operations agile and cost-effective.

Achieve a **360-degree perspective** on your indirect tax compliance, e-invoicing, and e-reporting responsibilities.

Why Deloitte?

Deloitte combines deep industry knowledge, advanced technology, and smart resourcing to help organizations run more efficiently. By combining ONESOURCE Pagero's leading e-invoicing platform with Deloitte's tax and compliance experience and multi-jurisdictional advisory capabilities, you gain a connected, compliant, and continuously improving e-invoicing and e-reporting operation—freeing your teams to focus on strategic priorities with confidence.

Get in touch



Olivier Hody

Deloitte Global Tax &
Legal E-invoicing and
E-reporting Leader
ohody@deloitte.com



Gregory Verpoorten

Deloitte Global Indirect
Tax Operate Leader
grverpoorten@deloitte.com



Jen Deutsch

Deloitte Global Thomson
Reuters Tax Alliance Leader
jdeutsch@deloitte.com



Demian de Souza

Tax Partner, Deloitte UK
dde Souza@deloitte.co.uk



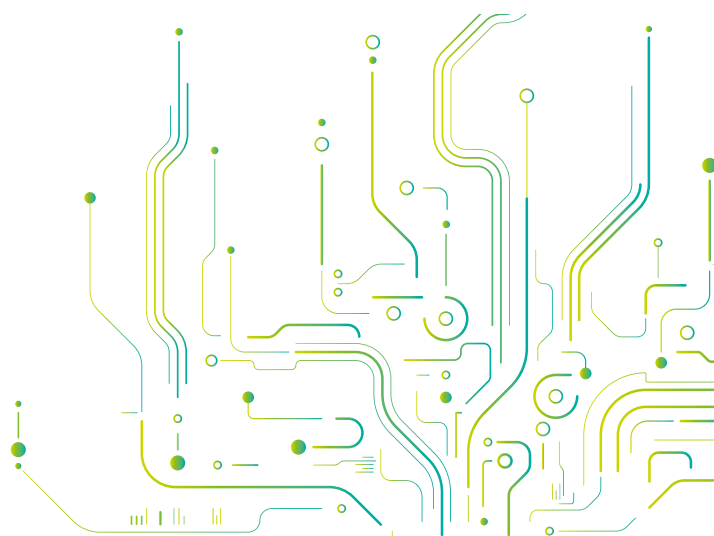
Ronnie Dassen

Deloitte Global Indirect
Tax Leader
ronniedassen@deloitte.com



Jan De Clercq

Deloitte Global Tax
Transformation
Consulting Leader
jadeclercq@deloitte.nl



Deloitte.com/einvoicing



Deloitte refers to one or more of Deloitte Touche Tohmatsu Limited (“DTTL”), its global network of member firms, and their related entities (collectively, the “Deloitte organization”). DTTL (also referred to as “Deloitte Global”) and each of its member firms and related entities are legally separate and independent entities, which cannot obligate or bind each other in respect of third parties. DTTL and each DTTL member firm and related entity is liable only for its own acts and omissions, and not those of each other. DTTL does not provide services to clients. Please see www.deloitte.com/about to learn more.

Deloitte provides leading professional services to nearly 90% of the Fortune Global 500® and thousands of private companies. Our people deliver measurable and lasting results that help reinforce public trust in capital markets and enable clients to transform and thrive. Building on its 180-year history, Deloitte spans more than 150 countries and territories. Learn how Deloitte’s approximately 460,000 people worldwide make an impact that matters at www.deloitte.com.

This communication contains general information only, and none of Deloitte Touche Tohmatsu Limited (“DTTL”), its global network of member firms or their related entities (collectively, the “Deloitte organization”) is, by means of this communication, rendering professional advice or services. Before making any decision or taking any action that may affect your finances or your business, you should consult a qualified professional adviser.

No representations, warranties or undertakings (express or implied) are given as to the accuracy or completeness of the information in this communication, and none of DTTL, its member firms, related entities, employees or agents shall be liable or responsible for any loss or damage whatsoever arising directly or indirectly in connection with any person relying on this communication. DTTL and each of its member firms, and their related entities, are legally separate and independent entities.