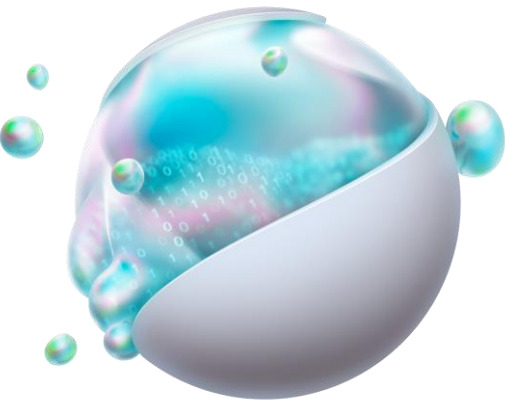


Software Group



iDeal

iDeal is an industry-agnostic tool that operates with speed, accuracy, and intelligence to provide merger and acquisition (M&A) professionals with answers to the most vital questions for M&A opportunities. This innovative and well-established technology gathers a wide range of datasets surrounding diligence, pre-deal, post-closing, and negotiations to quickly produce insights like:

- Financial Performance
- Source of growth
- Customer retention
- Risk identification.

FEATURES

Level 1 Data & Analyses Using Summary Financial Information

Standardises and automates financial data – such as income statements, balance sheets, cash flow statements (annual, quarterly, monthly), and trial balances – to allow for ongoing reporting and analysis. Analyses more than 50 million records and distils insights in easy-to-follow interactive visualisations.

Level 2 Data & Analyses Using Operational Management Information

Quickly maps, cleanses, and analyses operational data to highlight important trends and benchmarks, such as price, tonnage, yield, detailed costs, business units, KPIs, suppliers, and customers (annual, quarterly, monthly).

Level 3 Data & Analyses Using Transactional Records

Industry experts analyse large and complex datasets to identify key insights and issues by revealing individual records captured by the target’s systems, such as asset performance data, individual invoices, product sales, and transactional sales.

BENEFITS

- | | |
|--|--|
|  Standardise and automate analysis for financial due diligence processes to report monthly. |  Lead the industry by effortlessly finding the most attractive opportunities in the market. |
|  Enhance confidence in accurate and complete data to deliver robust insights important to M&A phases. |  Streamline the extraction and analysis of large and complex data sets to gather insights on key issues. |
|  Easily uncover the story behind the numbers by correlating micro-level details with macro-level decisions. |  Quickly identify key insights and issues with support from the Deloitte experts behind iDeal since 2016. |

CONTACT

Kurtis Heppner
Asset Owner (Partner)
Financial Advisory
kuheppner@deloitte.com.au

Leo Hua
National Technical Director
Financial Advisory
LeHua@deloitte.com.au

Every problem has a solution. How do we know? For years our people have been crafting solutions for our clients and the world's most pressing problems. Whether it's streamlining their work, assessing the risk of our clients' operations, creating a new operating model, helping them get to market or helping them build markets. And now, we're taking these intelligent insights, clever solutions, and astute ingenuity and putting them all together to find a more innovative way to do things.

The Software Group is a team of diverse individuals with a unique mix of skills and experience, but with a singular passion for innovation and a collective mission to combine our proprietary technology with services to deliver a solution that creates greater value for our clients. Deloitte's Software Group helps clients work smarter and faster to achieve beyond what was thought possible.

Client first solutions, today.

This communication and any attachment to it is for internal distribution among personnel of Deloitte Touche Tohmatsu Limited ("DTTL"), its global network of member firms and their related entities (collectively, the "Deloitte organisation").

It may contain confidential information and is intended solely for the use of the individual or entity to whom it is addressed. If you are not the intended recipient, please notify us immediately by replying to this email and then please delete this communication and all copies of it on your system. Please do not use this communication in any way.

None of DTTL, its member firms, related entities, employees or agents shall be responsible for any loss or damage whatsoever arising directly or indirectly in connection with any person relying on this communication. DTTL and each of its member firms, and their related entities, are legally separate and independent entities.

Deloitte refers to one or more of Deloitte Touche Tohmatsu Limited ("DTTL"), its global network of member firms, and their related entities (collectively, the "Deloitte organisation"). DTTL (also referred to as "Deloitte Global") and each of its member firms and related entities are legally separate and independent entities, which cannot obligate or bind each other in respect of third parties. DTTL and each DTTL member firm and related entity is liable only for its own acts and omissions, and not those of each other. DTTL does not provide services to clients. Please see www.deloitte.com/about to learn more.

Deloitte is a leading global provider of audit and assurance, consulting, financial advisory, risk advisory, tax and related services. Our global network of member firms and related entities in more than 150 countries and territories (collectively, the "Deloitte organisation") serves four out of five Fortune Global 500® companies. Learn how Deloitte's approximately 312,000 people make an impact that matters at www.deloitte.com.

Deloitte Asia Pacific

Deloitte Asia Pacific Limited is a company limited by guarantee and a member firm of DTTL. Members of Deloitte Asia Pacific Limited and their related entities, each of which are separate and independent legal entities, provide services from more than 100 cities across the region, including Auckland, Bangkok, Beijing, Hanoi, Hong Kong, Jakarta, Kuala Lumpur, Manila, Melbourne, Osaka, Seoul, Shanghai, Singapore, Sydney, Taipei and Tokyo.

Deloitte Australia

The Australian partnership of Deloitte Touche Tohmatsu is a member of Deloitte Asia Pacific Limited and the Deloitte organisation. As one of Australia's leading professional services firms, Deloitte Touche Tohmatsu and its affiliates provide audit, tax, consulting, risk advisory, and financial advisory services through approximately 8000 people across the country. Focused on the creation of value and growth, and known as an employer of choice for innovative human resources programs, we are dedicated to helping our clients and our people excel. For more information, please visit our web site at <https://www2.deloitte.com/au/en.html>.

Liability limited by a scheme approved under Professional Standards Legislation.

Member of Deloitte Asia Pacific Limited