

Deloitte.



MAKING AN
IMPACT THAT
MATTERS
since 1845

The Heart of Resilient Leadership *Responding to COVID-19*

March 24, 2020



In the crucible of crisis, resilient leaders are defined *first* by **who they are....**

Five qualities of a leader that distinguish between surviving and thriving amidst crisis

MISSION FIRST

Stabilize today, and harness both the **energy and the constraints** of volatile conditions to spark innovation tomorrow.

- *How are you turning the COVID-19 crisis into an opportunity to emerge stronger?*

SPEED OVER ELEGANCE

Decisive action – with courage – is often more essential than getting it perfect.

- *How are you empowering your teams to take courageous action in a volatile environment?*

DESIGN FROM THE HEART ...AND THE HEAD

Serve the heart of your organization, your **purpose**, and your **societal obligations**, while simultaneously making **hard decisions to protect financial viability**.

- *How are you balancing both empathy and decisiveness to serve your employees, customers, communities and ecosystem?*

OWN YOUR NARRATIVE

Paint a picture of a **compelling future and path forward** that your stakeholders can support and rally around.

- *How are you proactively filling the information vacuum to combat the spread of misinformation and rumor?*

EMBRACE THE LONG VIEW

Stay focused on what's on the horizon to instill confidence and steadiness across your ecosystem.

- *How are you anticipating and responding to the new business models likely to emerge post COVID-19?*

Resilient leaders are *then* defined by **what they do** along three dimensions



Priorities

The six functional areas most at risk during a crisis



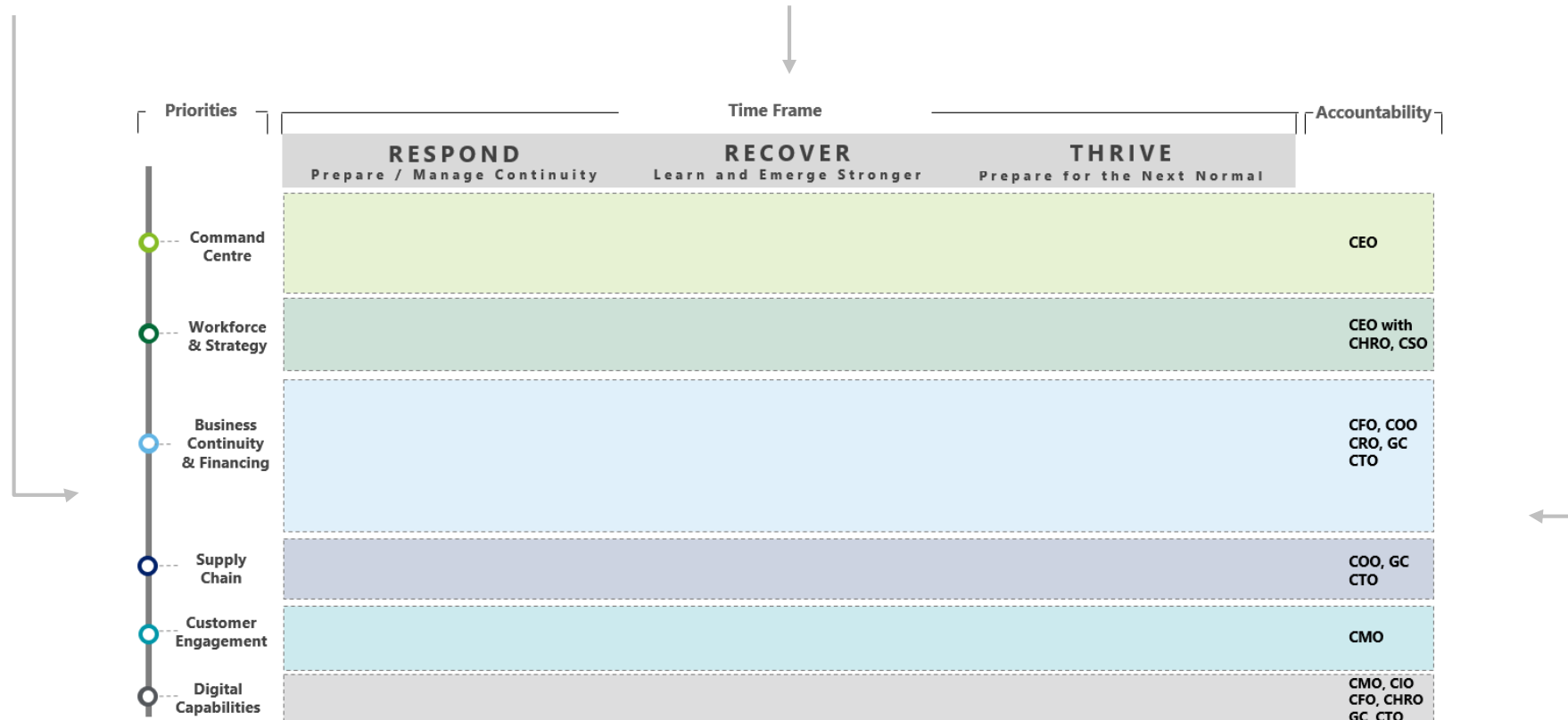
Time Frame

Thoughtfully selecting when to pivot from Respond to Recover to Thrive



Accountability

Defining who is responsible and accountable in the business



Resilient leaders in a crisis *take specific actions* across these three dimensions

Detailed briefings further covering these priority areas can be found on [Deloitte.com](https://www.deloitte.com).

Priorities	Time Frame			Accountability
	RESPOND Prepare / Manage Continuity	RECOVER Learn and Emerge Stronger	THRIVE Prepare for the Next Normal	
Command Centre	<ul style="list-style-type: none"> Institute crisis and resilience planning Nominate task force leadership team (and back-up) Activate and empower COVID-19 Command Centre Itemize organizational vulnerabilities by impact and value Develop and launch Communications Plan and Strategy Activate and communicate Pandemic Preparedness strategy Scenario plan to determine decisions to make today or defer 	<ul style="list-style-type: none"> Activate recovery contingency plan if required Reflect on lessons learned and rebuild with resilience Formalize and update crisis and resilience playbook Embed relevant Command Centre protocols into BAU 	<ul style="list-style-type: none"> Institute crisis and resilience planning as BAU Update crisis playbook to reflect COVID-19 lessons learned Organizational design for resilience and flexibility Regularly refresh vulnerabilities assessment 	CEO
Workforce & Strategy	<ul style="list-style-type: none"> Optimize corporate HR policy – leave, travel, global mobility Review employment contracts for potential issues Implement and monitor safe / flexible working arrangements Prioritize strategic choices and investments 	<ul style="list-style-type: none"> Reimagine workforce strategy and operating model Adopt “above-the-bar” regulatory / governance protocols Manage rapid employee return and ramp-up (future state) Execute on strategic growth, partner and M&A ambitions 	<ul style="list-style-type: none"> Rework employment arrangements to reflect next normal Employee education and training in crisis and resilience Consider shape of business models and ecosystems of the future Build scenario thinking / sensing into strategic decision-making 	CEO with CHRO, CSO
Business Continuity & Financing	<ul style="list-style-type: none"> Ensure actions uphold Responsible Business principles Implement cash conservation and recovery actions Evaluate working capital and liquidity requirements Rapid working capital optimization and credit solutions Control discretionary operating costs and capex Negotiate more flexible financing terms with lenders Communicate with other key financial stakeholders Understand impacts on contractual obligations (e.g. loss quantification, force majeure) Gather documentation for contract negotiations and claims Implement cash tax strategies / leverage government incentives 	<ul style="list-style-type: none"> Initiate claims and contract dispute resolution Ramp-up to normalized financial reporting Ensure internal audit resources reallocated based on risk Right size and operating model of support function (e.g. fixed vs variable resources; manpower vs technology) Implement equity raising and low-cost debt refinancing Exit of non-core and under-performing assets 	<ul style="list-style-type: none"> Maintain robust financial forecasts and scenario planning Stress test corporate model and capital structure Build resilience into operations and financing 	CFO, COO CRO, GC CTO
Supply Chain	<ul style="list-style-type: none"> Identify supply chain risks and potential disruptions Develop contingency plans for operational disruption Understand demand and supply side shocks and develop inventory strategies to buffer volatility and risk 	<ul style="list-style-type: none"> Establish multi-tier supplier network visibility to risks Collaborate with customers and suppliers to synchronize operations to priorities within constraints Manage inventory and cash flow through agile execution 	<ul style="list-style-type: none"> Establish control towers to predict, sense and prescribe risk responses Restructure supply chain to improve resilience Implement Industry 4.0 and Digital Supply Network (DSN) solutions to improve end-to-end visibility, synchronization, optimization, and agility 	COO, GC CTO
Customer Engagement	<ul style="list-style-type: none"> Engage with key customers to support business continuity Reinforce loyalty by protecting and rewarding customers Secure commercial and financial support from customers Develop communication strategy with front line employees 	<ul style="list-style-type: none"> Review orders vs commitments and inventory Use advanced technology in customer communications Reset receivables cycle and collections process and KPIs 	<ul style="list-style-type: none"> Establish open communication channels with customers Evaluate capacity / incentives to provide financial support Develop contingency plans for financial disruption Reimagine the operational model to strengthen customer engagement 	CMO
Digital Capabilities	<ul style="list-style-type: none"> Assess and address systems and cyber vulnerabilities Enable data-driven insights and situational awareness Develop real-time sensing / red flag reporting dashboard 	<ul style="list-style-type: none"> Update digital properties to synch with availability Design digitally-enabled flexible work arrangement Optimize e-commerce and customer / channel strategy 	<ul style="list-style-type: none"> Implement digitally-enabled future of work including for business processes and back-office functions Reflect on lesson learned and share best practices 	CMO, CIO CFO, CHRO GC, CTO

Resilient leaders will need to evaluate actions within the context of *geographic location and sector*

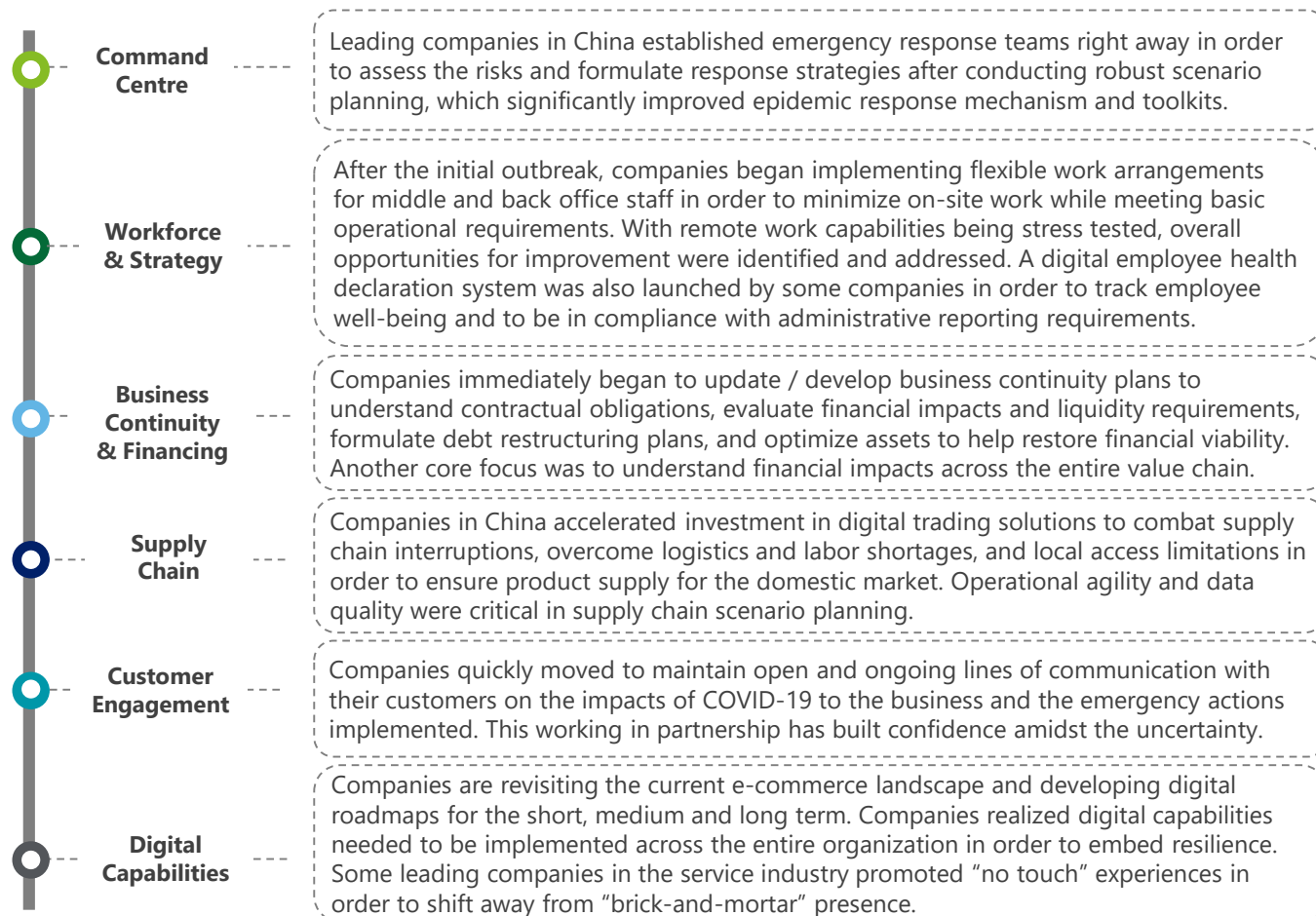
CASE STUDY: China took decisive actions to contain the impact of the crisis on their sectors. While the country was clearly impacted in Q1 FY20, there is evidence of recovery.

Short term Impact in Q1 2020
 Recovery Scenario Impact predominantly in H1 2020, recovery through H2 2020 (assuming normalisation in rest of world)

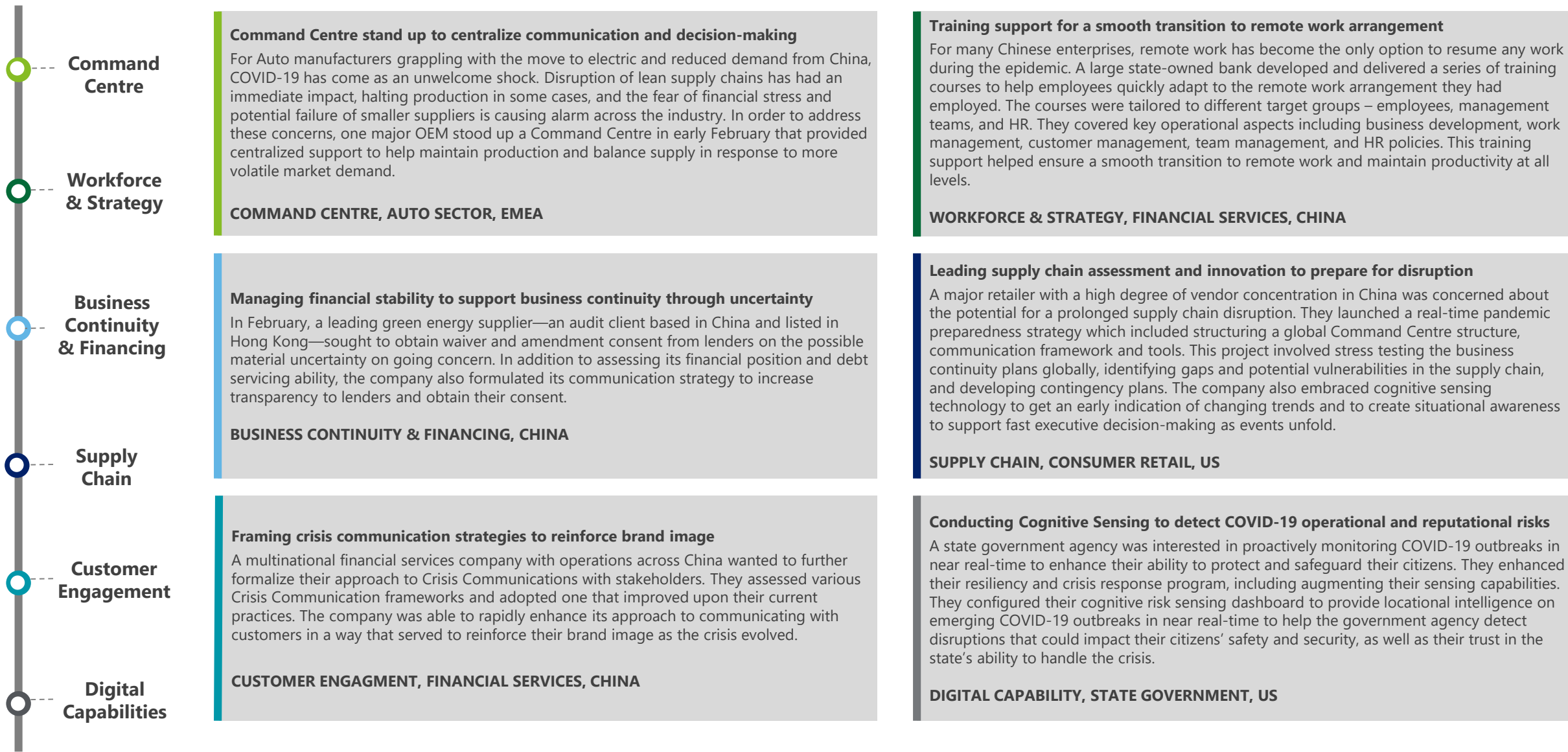
Priority Impact Sectors	Scenarios		Influencing Factors				
	Short term	Recovery scenario	Reduced/Restricted Travel	Production Suspended	Supply Chain Interruption	Reduced Consumption	Working Capital Pressure
Automotive	H	M	X	X	X	X	X
Consumer Goods (Clothing & Essentials)	M	M		X	X	X	
Consumer Goods (Luxury Goods)	H	M	X			X	X
Transportation and Hospitality	H	M	X	X	X	X	X
Technology (Hardware)	H	M	X	X	X	X	X
Real Estate	H	N	X	X		X	X
Oil & Gas	H	M	X	X	X	X	
Life Sciences	H	O	X	X	X	X	X

H High Impact
 M Significant disruption/financial impact
 N Neutral or Low impact
 O High demand/opportunity

Key learnings from leading companies in the Chinese market...



...while *leveraging the learnings* of those experiencing the same crisis conditions





Deloitte refers to one or more of Deloitte Touche Tohmatsu Limited (“DTTL”), its global network of member firms, and their related entities (collectively, the “Deloitte organization”). DTTL (also referred to as “Deloitte Global”) and each of its member firms and related entities are legally separate and independent entities, which cannot obligate or bind each other in respect of third parties. DTTL and each DTTL member firm and related entity is liable only for its own acts and omissions, and not those of each other. DTTL does not provide services to clients. Please see www.deloitte.com/about to learn more.

Deloitte is a leading global provider of audit and assurance, consulting, financial advisory, risk advisory, tax and related services. Our global network of member firms and related entities in more than 150 countries and territories (collectively, the “Deloitte organization”) serves four out of five Fortune Global 500® companies. Learn how Deloitte’s approximately 312,000 people make an impact that matters at www.deloitte.com

This communication contains general information only, and none of Deloitte Touche Tohmatsu Limited (“DTTL”), its global network of member firms or their related entities (collectively, the “Deloitte organization”) is, by means of this communication, rendering professional advice or services. Before making any decision or taking any action that may affect your finances or your business, you should consult a qualified professional adviser.

No representations, warranties or undertakings (express or implied) are given as to the accuracy or completeness of the information in this communication, and none of DTTL, its member firms, related entities, employees or agents shall be liable or responsible for any loss or damage whatsoever arising directly or indirectly in connection with any person relying on this communication. DTTL and each of its member firms, and their related entities, are legally separate and independent entities.

© 2020. For information, contact Deloitte Touche Tohmatsu Limited.