

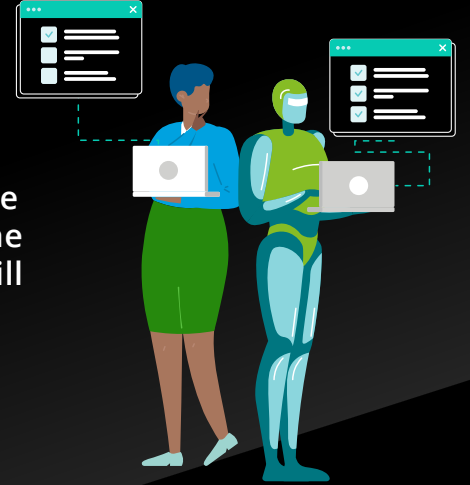
Embed female perspectives and voices into processes

Organizations with diverse leadership teams are **70%** more likely to report capturing a new market.



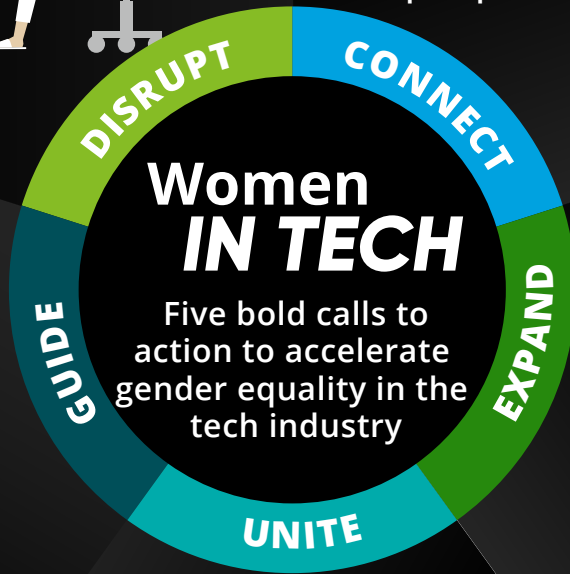
Invest in strategy and tools that encourage empathy

71% agree adding more women to machine learning and AI will bring unique perspectives.



Make female mentorship a part of your culture

Women in STEM careers with sponsors are **200%** more likely to see their ideas implemented.



Amplify the voices of women leading STEM and non-STEM roles

In 1970, women made up 8% of STEM workers but by 2021, women made up **31%** of all STEM professionals.



Create more constructive peer networks for women

Between 2019 and 2022, DEI strategy helped fuel a **4%** increase in female-held tech leadership roles.



Deloitte refers to one or more of Deloitte Touche Tohmatsu Limited (DTTL), its global network of member firms, and their related entities (collectively, the "Deloitte organization"). DTTL (also referred to as "Deloitte Global") and each of its member firms and related entities are legally separate and independent entities, which cannot obligate or bind each other in respect of third parties. DTTL and each DTTL member firm and related entity is liable only for its own acts and omissions, and not those of each other. DTTL does not provide services to clients. Please see www.deloitte.com/about to learn more.

Deloitte provides industry-leading audit and assurance, tax and legal, consulting, financial advisory, and risk advisory services to nearly 90% of the Fortune Global 500® and thousands of private companies. Our people deliver measurable and lasting results that help reinforce public trust in capital markets, enable clients to transform and thrive, and lead the way toward a stronger economy, a more equitable society, and a sustainable world. Building on its 175-plus year history, Deloitte spans more than 150 countries and territories. Learn how Deloitte's approximately 457,000 people worldwide make an impact that matters at www.deloitte.com.

This communication contains general information only, and none of Deloitte Touche Tohmatsu Limited (DTTL), its global network of member firms or their related entities (collectively, the "Deloitte organization") is, by means of this communication, rendering professional advice or services. Before making any decision or taking any action that may affect your finances or your business, you should consult a qualified professional adviser.

No representations, warranties or undertakings (express or implied) are given as to the accuracy or completeness of the information in this communication, and none of DTTL, its member firms, related entities, employees or agents shall be liable or responsible for any loss or damage whatsoever arising directly or indirectly in connection with any person relying on this communication. DTTL and each of its member firms, and the unrelated entities, are legally separate and independent entities.