

## Business Process Solutions(BPS)

Realization of operational efficiency

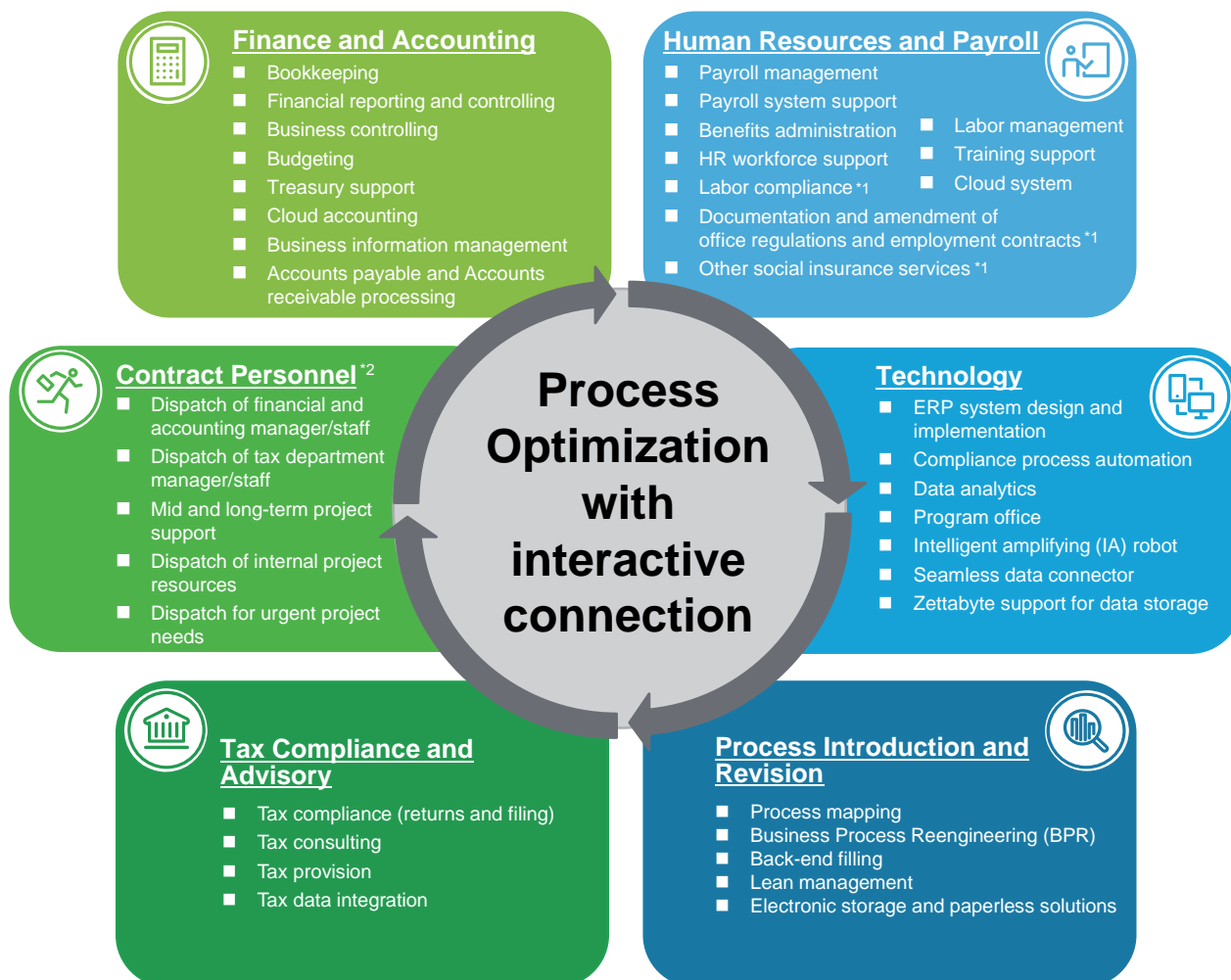
### Outsourcing services in Deloitte

Businesses today are facing rapid environmental changes, including changes in accounting systems, tax reform, and technology evolution.

For this reason, it is important for companies to make effective use of internal and external resources to visualize their core business processes and to operate them efficiently with flexibility, transparency, and control.

Business Process Solutions (BPS) of Deloitte Tohmatsu Tax Co. provides practical support in six service lines with highly experienced professionals forming flexible teams to meet client situations and needs.

Each our service line uses technology to work together seamlessly to help clients improve performance and efficiency and reduce workload.

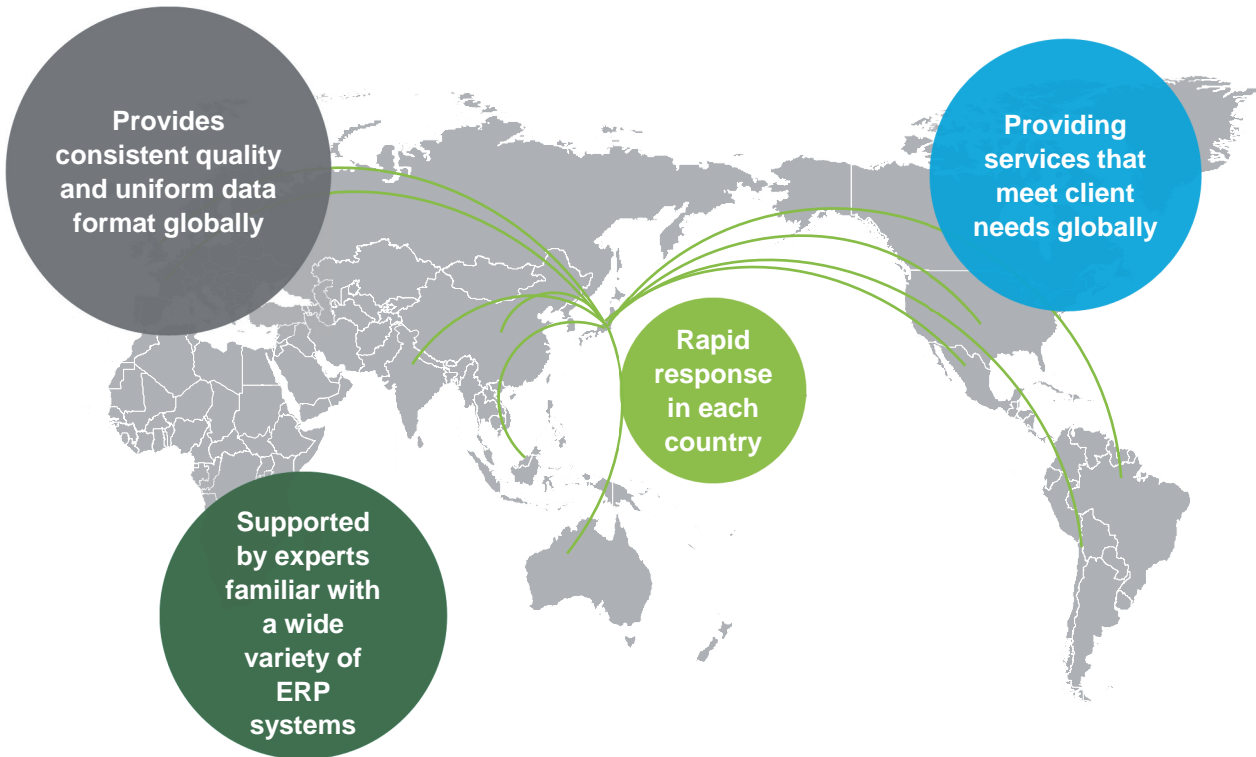


\*1 The service provided by [Deloitte Tohmatsu Social Insurance and Labor Advisors Co.](#)

\*2 The service provided by [Deloitte Tohmatsu Talent Platform Co., Ltd.](#)

## Global Deloitte network

BPS can cover clients' overseas locations through global Deloitte network of more than 150 countries and regions. We provide prompt support through cooperation with the local Deloitte offices.



### Contact

#### Deloitte Tohmatsu Tax Co.

Tel 03-6213-3800  
email [tax.cs@tohmatsu.co.jp](mailto:tax.cs@tohmatsu.co.jp)  
Corporate Info [www.deloitte.com/jp/en/tax](http://www.deloitte.com/jp/en/tax)  
Tax Services [www.deloitte.com/jp/tax/s/en](http://www.deloitte.com/jp/tax/s/en)  
BPS Services <http://www.deloitte.com/jp/tax/bps/en>

For more information



Deloitte Tohmatsu Group (Deloitte Japan) is a collective term that refers to Deloitte Tohmatsu LLC, which is the Member of Deloitte Asia Pacific Limited and of the Deloitte Network in Japan, and firms affiliated with Deloitte Tohmatsu LLC that include Deloitte Touche Tohmatsu LLC, Deloitte Tohmatsu Consulting LLC, Deloitte Tohmatsu Financial Advisory LLC, Deloitte Tohmatsu Tax Co., DT Legal Japan, and Deloitte Tohmatsu Corporate Solutions LLC. Deloitte Tohmatsu Group is known as one of the largest professional services groups in Japan. Through the firms in the Group, Deloitte Tohmatsu Group provides audit & assurance, risk advisory, consulting, financial advisory, tax, legal and related services in accordance with applicable laws and regulations. With about more than 10,000 professionals in nearly 40 cities throughout Japan, Deloitte Tohmatsu Group serves a number of clients including multinational enterprises and major Japanese businesses. For more information, please visit the Group's website at [www.deloitte.com/jp/en](http://www.deloitte.com/jp/en).

Deloitte refers to one or more of Deloitte Touche Tohmatsu Limited ("DTTL"), its global network of member firms, and their related entities. DTTL (also referred to as "Deloitte Global") and each of its member firms and their affiliated entities are legally separate and independent entities. DTTL does not provide services to clients. Please see [www.deloitte.com/about](http://www.deloitte.com/about) to learn more.

Deloitte Asia Pacific Limited is a company limited by guarantee and a member firm of DTTL. Members of Deloitte Asia Pacific Limited and their related entities, each of which are separate and independent legal entities, provide services from more than 100 cities across the region, including Auckland, Bangkok, Beijing, Hanoi, Hong Kong, Jakarta, Kuala Lumpur, Manila, Melbourne, Osaka, Shanghai, Singapore, Sydney, Taipei and Tokyo.

Deloitte is a leading global provider of audit and assurance, consulting, financial advisory, risk advisory, tax and related services. Our network of member firms in more than 150 countries and territories serves four out of five Fortune Global 500@companies. Learn how Deloitte's approximately 286,000 people make an impact that matters at [www.deloitte.com](http://www.deloitte.com).

This communication contains general information only, and none of Deloitte Touche Tohmatsu Limited, its member firms, or their related entities (collectively, the "Deloitte Network") is, by means of this communication, rendering professional advice or services. Before making any decision or taking any action that may affect your finances or your business, you should consult a qualified professional adviser. No entity in the Deloitte Network shall be responsible for any loss whatsoever sustained by any person who relies on this communication.

Member of  
**Deloitte Touche Tohmatsu Limited**

© 2020. For information, contact Deloitte Tohmatsu Tax Co.



**IS 669126 / ISO 27001**