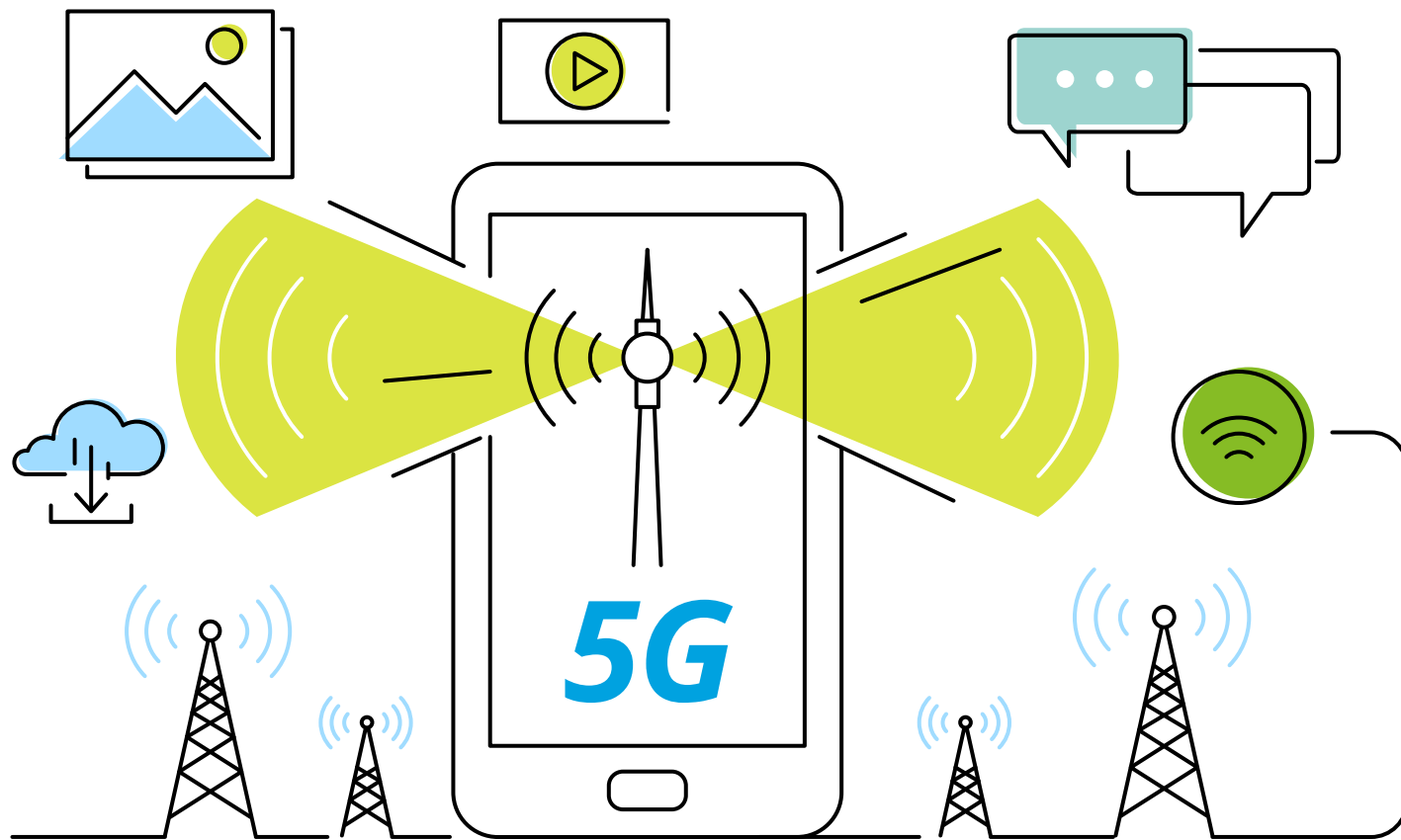


5G: A revolution in evolution, even in 2017

Deloitte Global predicts that over

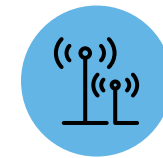
200 mobile networks

will include elements of 5G network architecture in 2017



These will be found among upgraded **4G (LTE-A and LTE-A Pro) networks**, which will provide a steady progression to the full launch of 5G in 2020

Advanced 4G networks introduce network components including:



Carrier aggregation



Licensed Assisted Access



MIMO



QAM



Beamforming

Deloitte.

#DeloittePredicts

www.deloitte.com/predictions

Deloitte refers to one or more of Deloitte Touche Tohmatsu Limited, a UK private company limited by guarantee ("DTTL"), its network of member firms, and their related entities. DTTL and each of its member firms are legally separate and independent entities. DTTL (also referred to as "Deloitte Global") does not provide services to clients. Please see www.deloitte.com/about to learn more about our global network of member firms. This communication contains general information only, and none of Deloitte Touche Tohmatsu Limited, its member firms, or their related entities (collectively the "Deloitte Network") is, by means of this communication, rendering professional advice or services. Before making any decision or taking any action that may affect your finances or your business, you should consult a qualified professional adviser. No entity in the Deloitte Network shall be responsible for any loss whatsoever sustained by any person who relies on this communication.