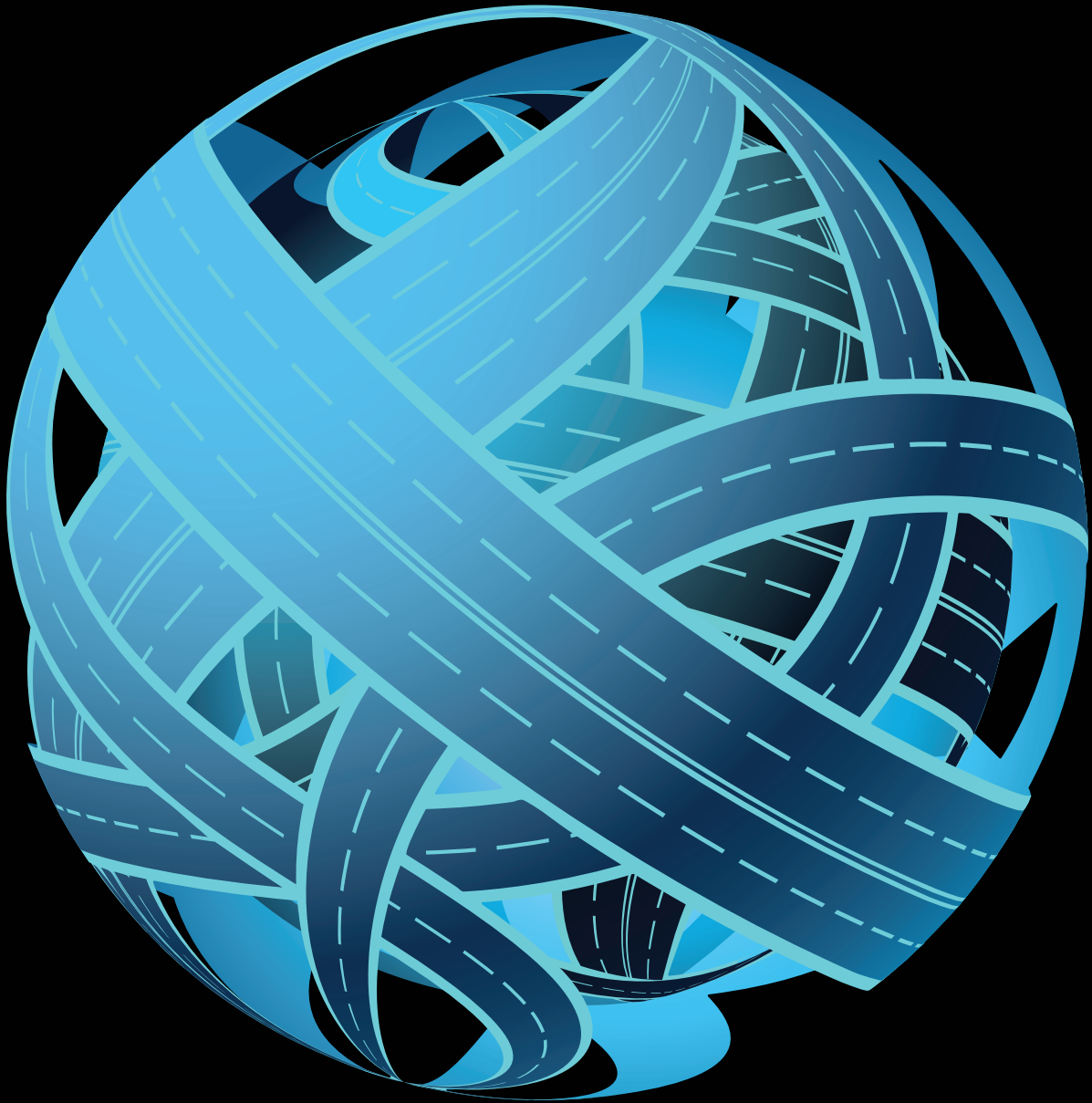


Deloitte.



The MiFID II journey

Your integrated regulatory
and compliance solution

We can support you throughout your MiFID II compliance journey

There has been more than three years since the launch of a cataclysmic shock in Investment services markets under the name of MiFID II on the 3rd of January 2018 and the aftershocks are still going. The 30,000+ page Level 1, 2 & 3 text keeps growing and has been a major game changer for market participants facing a mountain of new requirements that are bound to have an impact on firms' operating models. Our team of specialists and our MiFID II taskforce can support you on your MiFID compliance journey and implementation phases.

Helping you with your Licensing and Application process



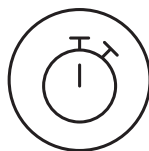
Licensing and Application Process

Helping you with the preparation and submission of the license application package, including liaising with the Regulator throughout the authorisation process.



Internal control framework

Assess/review/design the internal control framework of the organisation (e.g. three lines of defence model).



Regulatory watch

Stay **up to date with the regulatory changes** that directly or indirectly affect your organisation through regulatory technology tools, such as RegMiner, as well as via our monthly regulatory outlook.

Providing updates in relation to **latest regulatory developments**, including CySEC's issuance of circulars, directives and announcements, as well as any other EU regulatory developments relevant to the scope of the Company's activities and operations, **including their effect, if any, on the operations and activities of the Company.**



Regulatory Q&A Helpdesk

Providing answers and responses to Company's questions/queries arising in the process of the Company's operations and relating to the Law regarding the Provision of Investment Services, the Exercise of Investment Activities and the Operation of Regulated Markets of 2017, as amended from time to time, as well as any ensuing CySEC or EU existing or forthcoming, Circulars, Regulations and Directives.

Responses may be written or oral, according to the case and urgency.



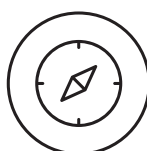
Ongoing advisory support on regulatory compliance matters



Support to the Company's Compliance Officer

Examples include:

- Providing guidance on matters related to the duties and responsibilities of the Compliance Officer by responding to specific queries.
- Support in relation to specific responses to CySEC's questions/ requests, as these may be required from time to time, as well as general guidance on the new and existing CySEC reporting requirements.



Regulatory Advice on specific matters

Examples include:

- Gap assessments on specific regulations
- Regulatory Advice on permissible activities and delegation/ outsourcing arrangements
- Due-diligence on specific counterparties
- Applicability of specific CySEC/ ESMA directives or circulars/ guidelines to the firm and impact/ remediation

Responses may be written or oral, according to the case and urgency.



Policies and procedures

Draft/review and adapt your policies and procedures in light of the applicable regulation.

Examples of such policies and procedures include:

- Product Governance policy
- Remuneration Policy
- Appropriateness and Suitability Policy
- Business Continuity Plan
- Risk Management Policy and Procedures etc.

Your contacts for MiFID II

Clea Evagorou

Partner, Risk Advisory Services Leader
clevagorou@deloitte.com
Tel: +357 22 360 600

Theodora Economides

Senior Manager, Risk Advisory
teconomides@deloitte.com
Tel: +357 22 360 815

Nicosia

24 Spyrou Kyprianou Avenue
CY-1075 Nicosia, Cyprus
P.O.Box 21675
CY-1512 Nicosia, Cyprus
Tel.: +357 22360300
Fax: +357 22360400
infonicosia@deloitte.com

Limassol

Maximos Plaza, Tower 1, 3rd floor
213 Arch. Makariou III Avenue
CY-3030 Limassol, Cyprus
P.O.Box 58466
CY-3734 Limassol, Cyprus
Tel.: +357 25868686
Fax: +357 25868600
infolimassol@deloitte.com

www.deloitte.com/cy

Deloitte.

This publication has been written in general terms and therefore cannot be relied on to cover specific situations; application of the principles set out will depend upon the particular circumstances involved and we recommend that you obtain professional advice before acting or refraining from acting on any of the contents of this publication.

Deloitte refers to one or more of Deloitte Touche Tohmatsu Limited, a UK private company limited by guarantee ("DTTL"), its global network of member firms, and their related entities (collectively, the "Deloitte organisation"). DTTL (also referred to as "Deloitte Global") and each of its member firms and related entities are legally separate and independent entities, which cannot obligate or bind each other in respect of third parties. DTTL and each DTTL member firm and related entity is liable only for its own acts and omissions, and not those of each other. DTTL does not provide services to clients. Please see www.deloitte.com/about to learn more.

Deloitte & Touche (M.E.) LLP (DME) is the affiliate for the territories of the Middle East and Cyprus of Deloitte NSE LLP ("NSE"), a UK limited liability partnership and member firm of DTTL.

Deloitte Limited, a private limited liability company registered in Cyprus (Reg. No. 162812) is the sublicensed affiliate of Deloitte NSE for Cyprus. Deloitte Limited is among the leading professional services firms in Cyprus, providing audit & assurance, consulting, financial advisory, risk advisory, tax and related services as well as a complete range of services to international business through over 750 people in Nicosia and Limassol. For more information, please visit www.deloitte.com/cy.

Deloitte is a leading global provider of audit and assurance, consulting, financial advisory, risk advisory, tax and related services. Our network of member firms in more than 150 countries and territories, serves four out of five Fortune Global 500® companies. Learn how Deloitte's approximately 312,000 people make an impact that matters at www.deloitte.com. Deloitte Limited would be pleased to advise readers on how to apply the principles set out in this publication to their specific circumstances. Deloitte Limited accepts no duty of care or liability for any loss occasioned to any person acting or refraining from action as a result of any material in this publication.

Offices: Nicosia, Limassol

© 2021 Deloitte Limited