



# Caribbean & Bermuda Countries

## Our Region

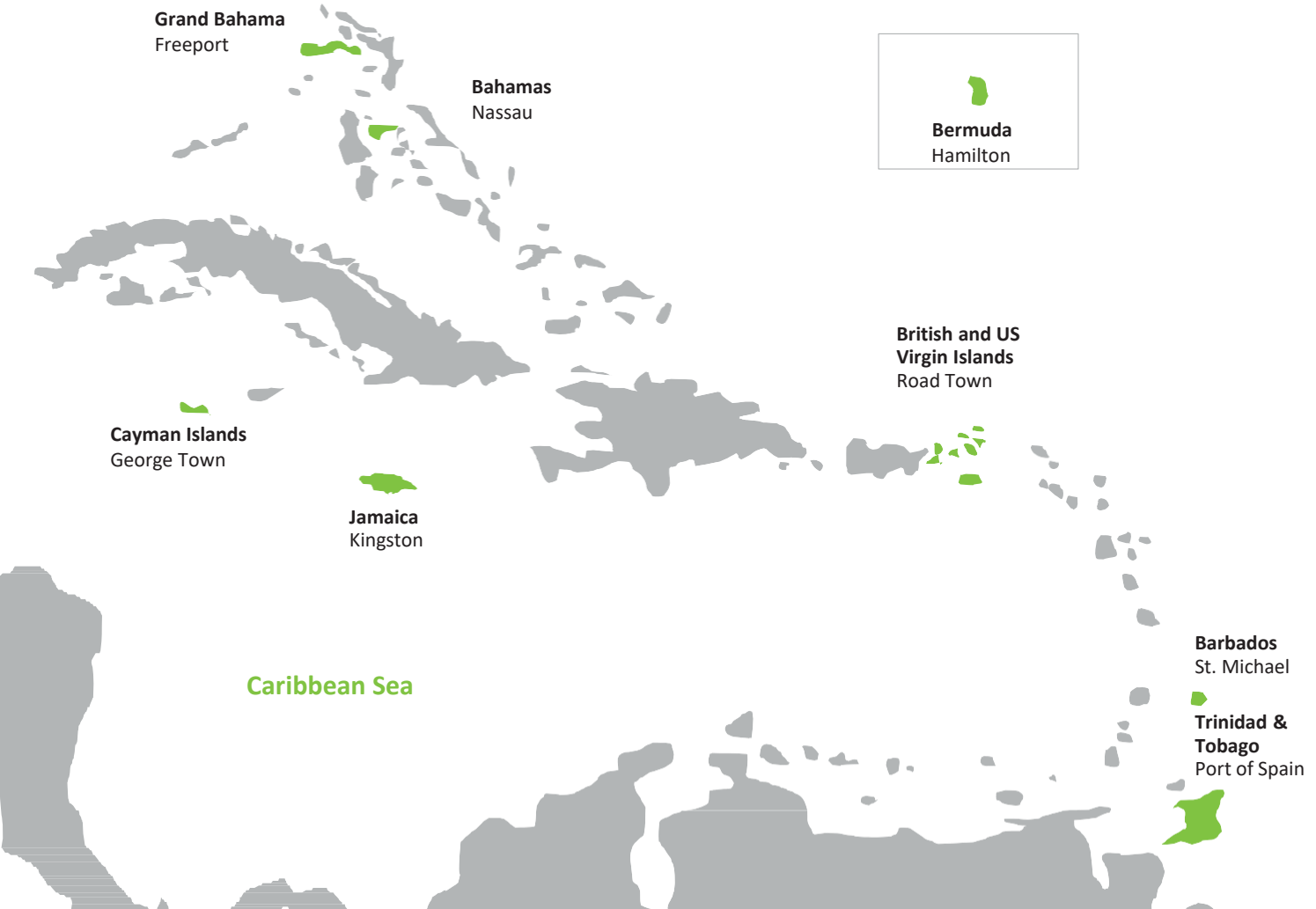
Deloitte in the Caribbean and Bermuda Countries (CBC) operates as an integrated firm serving the English-speaking Caribbean from offices in the Bahamas, Barbados, Bermuda, British and United States Virgin Islands, Cayman Islands, and Trinidad & Tobago. With over 550 professionals dedicated to bringing their talents to bear on our clients' unique issues, Deloitte has a strong presence in the wider Caribbean and Bermuda region. Our 'As One' strategy is designed to sustain our focus on an unwavering commitment to quality and excellence across borders.

We have extensive expertise and knowledge of a variety of industries and sectors, with a specialist focus on financial services; tourism & hospitality; the public sector; technology, media &

telecommunications; and energy & resources. We assist clients on a large number of matters including complex, multi-jurisdictional litigation; insolvency proceedings; and investigation and asset recovery projects. Our clients include banks, hedge funds, captive, and re-insurance companies; corporate service providers and special purpose vehicle companies; energy companies; utility companies; and public sector entities including law enforcement and regulatory authorities.

Our Financial Advisory professionals in the CBC region have diverse backgrounds and significant experience in assisting companies with their complex issues such as mergers and acquisitions, fraud, litigation, restructuring, and insolvency.

## Atlantic Ocean



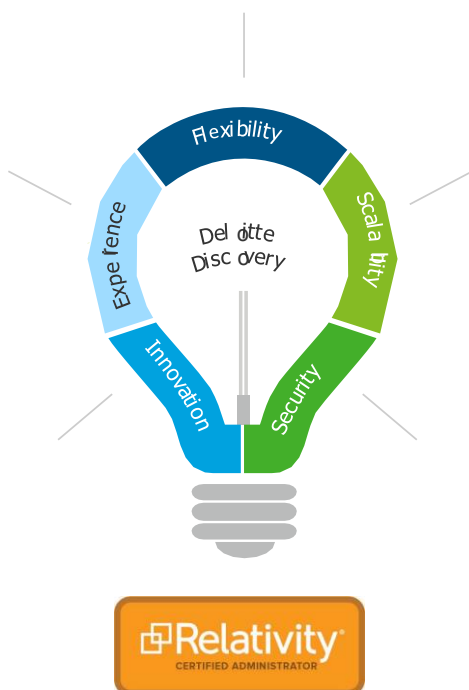
# Deloitte Discovery

## Overview

The complexity and volume of data in today's corporate climate means businesses in the Caribbean & Bermuda Countries ("CBC") are under ever-increasing pressure to understand the data generated during day-to-day business activities. Deloitte Discovery assists clients in the CBC by using technology to change perspective and see further.

Deloitte CBC has an experienced team of electronic discovery, computer & cyber forensic, IT security, data analytics, and information system specialists assisting litigators and forensic investigators to manage the information on which cases are built.

We leverage our industry experience from the CBC and the global Deloitte network to provide deeper insights and smarter, more efficient solutions so counsel and clients can control costs and mitigate risks during the discovery process.



## Our Services

- Applying proven methodologies and use of systems designed to meet the specific and unique requirements for each project;
- Providing the ability to scale and mobilise experienced teams and resources at short notice to meet changes in discovery requirements;
- Integrating discovery processes with wider litigation support such as investigations, forensic accounting, valuation, or insolvency procedures;
- Undertaking forensic acquisitions of computers, storage devices, servers, network storage devices, mobile phones, and smart devices;
- Maintaining chain-of-custody records and utilising evidence management systems to ensure the integrity of forensic evidence from preservation to production;
- Offering defensible search strategies and early case assessment with data culling, deduplication, and filtering of irrelevant materials at early stages of the discovery process;
- Processing and hosting data for electronic discovery using Relativity as the preferred hosting platform with three Relativity Certified Administrators on-site;
- Creating a customised review interface and providing tailored database training to review teams, including basic reviewer and advanced or administrative review manager courses;
- Leveraging highly skilled staff to perform document review; while our methodology varies according to the individual engagement, we invoke a consistent global methodology during our reviews including linear, non-linear, and hybrid approaches;

- Utilising technology and analytics to prioritise document sets, assisting internal and external document reviews while demonstrating cost reductions;
- Delivering accurate and on-time production of data in multiple formats, efficiently and with a high level of quality; and
- Supporting hosted database archive solutions to reduce monthly hosting fees while maintaining coding decisions, production history, and audit logs.

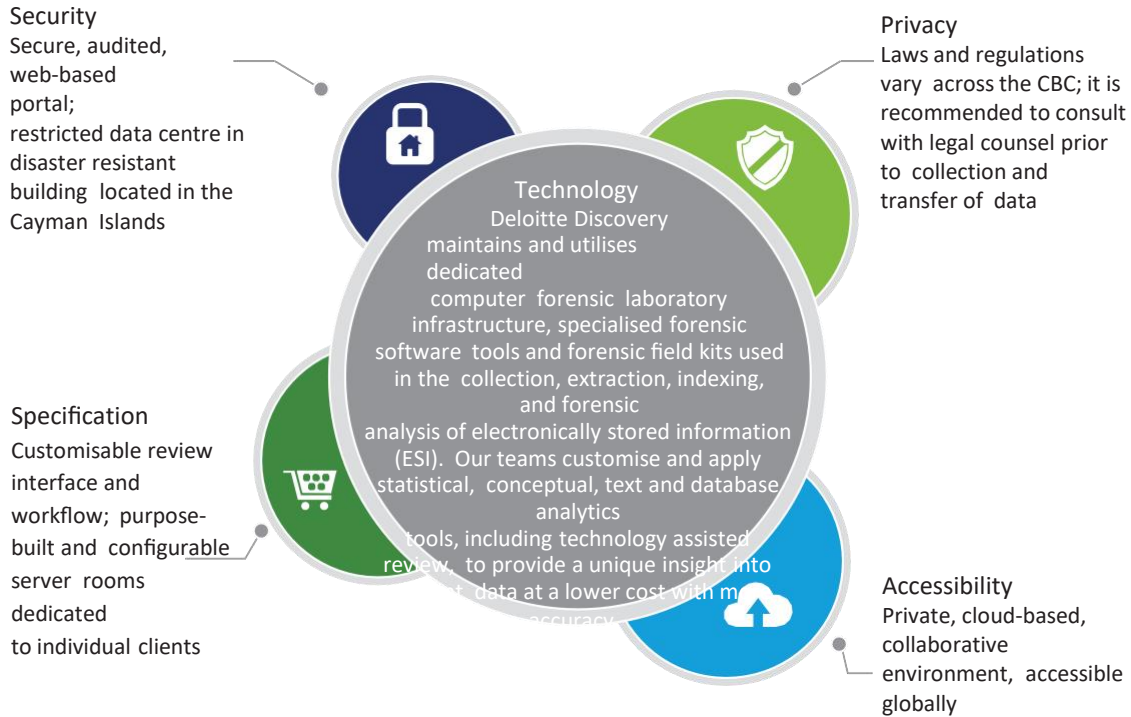
## 5 Core Services



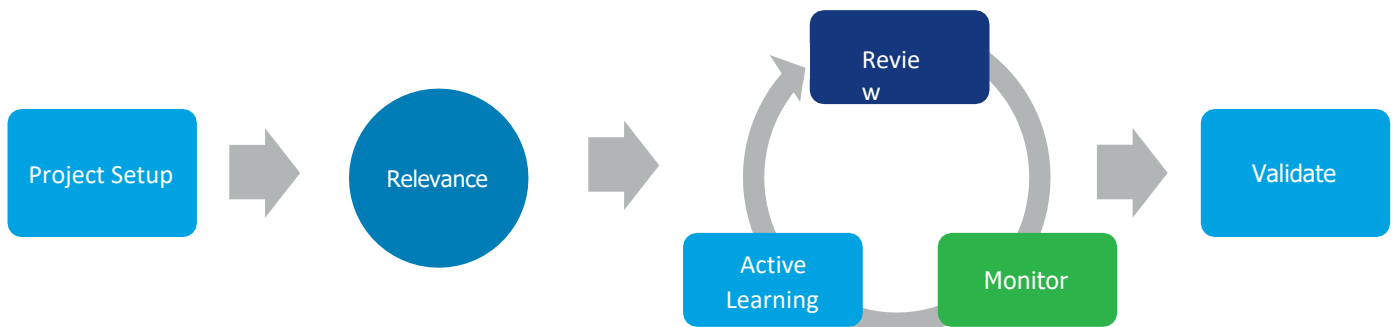
**Our Technology & Processes**

Deloitte Discovery is equipped with the latest hardware and software solutions to provide an efficient and proportionate response, regardless of the location, scale, or complexity of technology encountered. Our primary processing and review platform is Relativity, hosted directly from our Discovery Data Centre in George Town, Grand Cayman. Our staff, including Relativity Certified Administrators, have extensive knowledge and expertise in creating customised interfaces and building applications tailored for various review workflows.

Deloitte Discovery also provides server rooms to be used as a primary location for high-density production server environments, or for disaster recovery and continuity purposes. We offer co- location hosting services, disaster recovery suites, and secure media and document storage. We maintain physical, electronic, and procedural safeguards that are designed to protect the security and confidentiality of client information.



Deloitte Discovery employs analytics and reporting solutions that help to reduce the risks and costs associated with electronic discovery. We leverage advanced analytics to glean information about document populations and structure review workflows more efficiently, grouping documents by conceptual similarity, email thread, and/or language together. Assisted review technologies can categorise large or unknown document populations, allowing likely responsive documents to be funnelled through review and production in short order. Assisted review is also successful in enhancing quality control.



## Representative Client Engagements

Deloitte Discovery provides a consistent and high level of service, while adapting offerings to meet the needs of clients in an ever-changing market. Our professionals assist clients to address the organisational and technological challenges of today's complex investigation and litigation environments and to implement practical approaches, supported by specialised technology and processes.

### Electronic discovery for hedge fund-related litigation in the United States

Retained by the court appointed liquidators of a Cayman Islands domiciled hedge fund to collect, process, host, review, and produce data as part of an asset recovery investigation. Data was collected from desktop computers, laptops and servers and was processed in our Discovery Data Centre. Following processing and review, the data was produced for asset recovery litigation in the United States.



### Electronic discovery for law enforcement agency in fraud investigation

Retained to assist with full suite of forensic and discovery services for an investigation of complex, multinational fraud. Services provided included: collection of several terabytes data from 3,000+ sources including: enterprise systems, laptop and desktop computers, financial data platforms, mobile devices, back-up data spanning 10+ years, and over 1.5 million pages of hardcopy; processing, hosting, and analysis of data; first pass review; and further review by forensic accountants, legal counsel, and investigation agencies.



### Electronic discovery for government investigation

Retained by a regional financial services institution to conduct collections of data from their financial, email, and user systems in response to a multi-jurisdictional legal matter. In less than a week, over 20 terabytes of data were collected, with over 1 terabyte of data processed and hosted for reviewers in the Cayman Islands and the United States. Our team assisted counsel with validating search terms; used advanced analytics tools to reduce the overall review population; implemented concept-based clustering to batch documents for review; and performed rolling productions to meet a government-imposed deadline.



### Collection, processing, and analysis of data for investigation into bid rigging allegations

Retained by a public utilities company to provide collection and analysis of email data relating to approximately 20 custodians thought to have potential knowledge of bid rigging activities. At the request of the client, data collection was performed outside of business hours to avoid alerting individuals to the ongoing investigation. Data was processed at our Discovery Data Centre to facilitate the further investigation of certain individuals' activities and use of corporate and non-corporate email, computers, and mobile devices.

## Contacts



**Nick Kedney**  
Partner, Deloitte Discovery  
+1 (345) 743 6287  
[nkedney@deloitte.com](mailto:nkedney@deloitte.com)



**John White**  
Director, Deloitte Discovery  
+1 (345) 743 6249  
[jjwhite@deloitte.com](mailto:jjwhite@deloitte.com)



**Joffrey Tan**  
Manager  
+1 (441) 299 1882  
[joffrey.tan@deloitte.com](mailto:joffrey.tan@deloitte.com)



**Carly Dignam**  
Senior Manager, Deloitte Discovery  
+1 (345) 743 6328  
[cadignam@deloitte.com](mailto:cadignam@deloitte.com)



Deloitte refers to one or more of Deloitte Touche Tohmatsu Limited (“DTTL”), its global network of member firms, and their related entities (collectively, the “Deloitte organization”). DTTL (also referred to as “Deloitte Global”) and each of its member firms and related entities are legally separate and independent entities, which cannot obligate or bind each other in respect of third parties. DTTL and each DTTL member firm and related entity is liable only for its own acts and omissions, and not those of each other. DTTL does not provide services to clients. Please see [www.deloitte.com/about](http://www.deloitte.com/about) to learn more. Deloitte & Touche LLP is an affiliate of DCB Holding Ltd., a member firm of Deloitte Touche Tohmatsu Limited.

Deloitte is a leading global provider of audit and assurance, consulting, financial advisory, risk advisory, tax and related services. Our global network of member firms and related entities in more than 150 countries and territories (collectively, the “Deloitte organization”) serves four out of five Fortune Global 500® companies. Learn how Deloitte’s approximately 330,000 people make an impact that matters at [www.deloitte.com](http://www.deloitte.com)

This communication contains general information only, and none of Deloitte Touche Tohmatsu Limited (“DTTL”), its global network of member firms or their related entities (collectively, the “Deloitte organization”) is, by means of this communication, rendering professional advice or services. Before making any decision or taking any action that may affect your finances or your business, you should consult a qualified professional adviser.

No representations, warranties or undertakings (express or implied) are given as to the accuracy or completeness of the information in this communication, and none of DTTL, its member firms, related entities, employees or agents shall be liable or responsible for any loss or damage whatsoever arising directly or indirectly in connection with any person relying on this communication. DTTL and each of its member firms, and their related entities, are legally separate and independent entities.