

# Contacts

## Deloitte – Blackline Contacts



**Tom Van Cauwenberge**  
Partner, Deloitte Belgium  
tvancauwenberge@deloitte.com



**Sven Bosman**  
Director, Deloitte Belgium  
sbosman@deloitte.com



**Tina Roeseems**  
Manager, Deloitte Belgium  
troeseems@deloitte.com

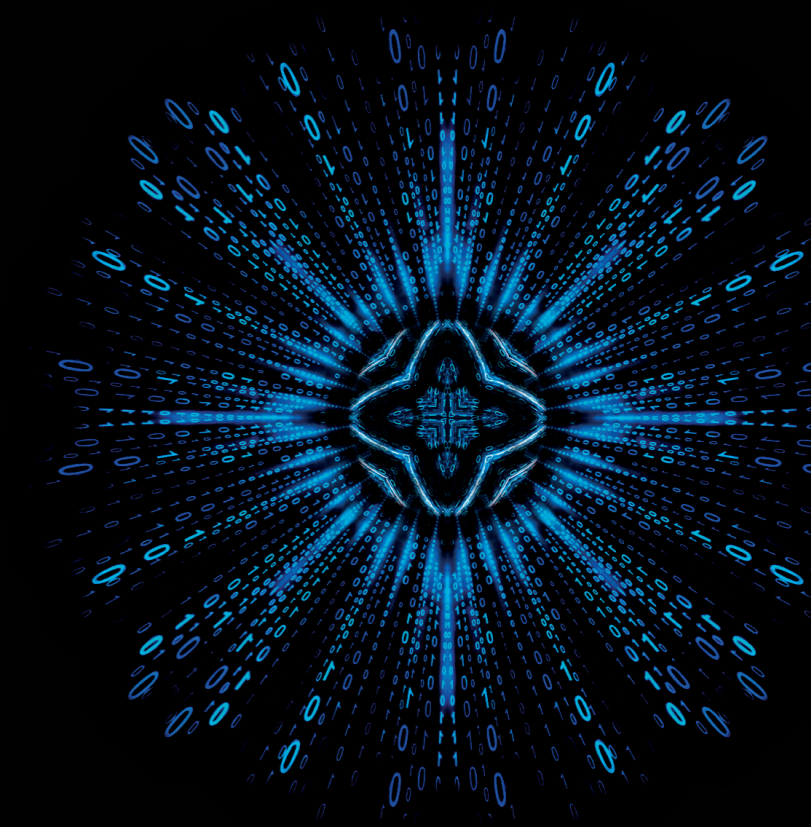
## Deloitte – SAP Contacts



**Frederik D'heer**  
Partner, Deloitte Belgium  
fdheer@deloitte.com



**Deloitte.**



# Deloitte.

Deloitte refers to one or more of Deloitte Touche Tohmatsu Limited, a UK private company limited by guarantee (“DTTL”), its network of member firms, and their related entities. DTTL and each of its member firms are legally separate and independent entities. DTTL (also referred to as “Deloitte Global”) does not provide services to clients. Please see [www.deloitte.com/about](http://www.deloitte.com/about) for a more detailed description of DTTL and its member firms.

Deloitte provides audit, tax and legal, consulting, and financial advisory services to public and private clients spanning multiple industries. With a globally connected network of member firms in more than 150 countries, Deloitte brings world-class capabilities and high-quality service to clients, delivering the insights they need to address their most complex business challenges. Deloitte has in the region of 312,000 professionals, all committed to becoming the standard of excellence.

This publication contains general information only, and none of Deloitte Touche Tohmatsu Limited, its member firms, or their related entities (collectively, the “Deloitte Network”) is, by means of this publication, rendering professional advice or services. Before making any decision or taking any action that may affect your finances or your business, you should consult a qualified professional adviser. No entity in the Deloitte Network shall be responsible for any loss whatsoever sustained by any person who relies on this publication.

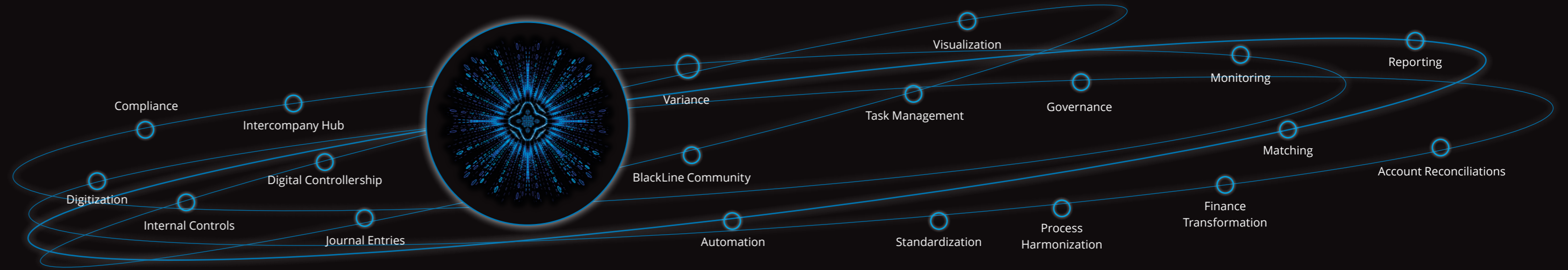
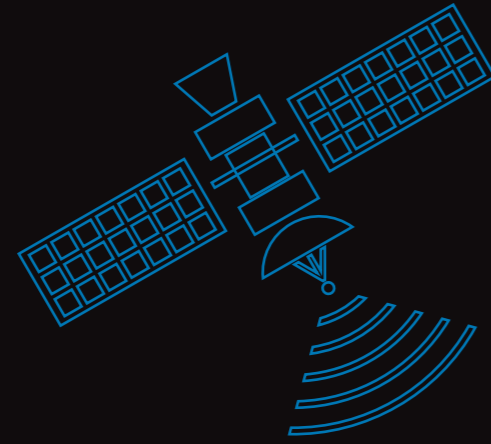
© March 2020, Deloitte Belgium

**The Power of Three**  
The Deloitte, SAP and BlackLine  
integrated approach

In alliance with:



'The synergy of three world class leaders offering one integrated approach, represents a powerful opportunity to transform your business, innovate, grow and excel in an evolving landscape.'



### Working together to transform your Financial Close experience

#### Deloitte SAP Finance Capabilities

Deloitte can help your business 'reimagine everything', get the most out of your SAP® investments, and position your business for future digital demands.

Transforming core systems into a true platform that can drive value is a priority for many enterprise leaders. Deloitte can help you reimagine what such a transformation looks like—and what it can mean for your business.

To take your business to the next level, you will need to increase the many opportunities provided by the digital economy.

We support our clients to:

- Improve the customer experience
- Realize new possibilities
- Increase the power of data across your ecosystem
- Leverage new platforms and networks
- Empower employees
- Make data-driven decisions
- Reduce capital investment through hosting and support
- Understand the impact of the Future of Finance
- Realize 'digital twin' benefits

#### BlackLine SAP Alliance

The BlackLine SAP Premium Qualified solutions complement your SAP environment by automating processes, strengthening controls and streamlining core close tasks, including use cases such as balance sheet substantiation, journal entry processing, high-volume transactions, clearing open items and intercompany accounting.

BlackLine enhances financial controls and adds significant automation to processes that are historically performed outside of SAP Solutions.

We support our clients to:

- Improve efficiency for a faster close
- Standardize process and improve reporting quality
- Enforcing controls and reduce risk
- Enhance visibility
- Integrate with your systems
- Getting more out of SAP

SAP does a lot. BlackLine does the rest. Deloitte help you make it happen.

#### Deloitte BlackLine Capabilities

Our long term collaboration and global alliance with BlackLine, technical experience, global and regional capabilities and ability to deliver seamlessly across borders makes for an unrivalled BlackLine implementation partner.

We deliver a smooth end to end user experience, improving your financial data quality, reducing the risk of misstatement and streamlining your financial close, while developing tailored governance, internal control and compliance frameworks.

We have helped hundreds of clients from across all industry sectors to realise the return from their investment in BlackLine, leveraging our wealth of experience and our market leading accelerators.

Our clients benefit from a consistent global approach and competitive pricing based on flexible delivery models.

We support our clients to:

- Implement and configure their environment
- Design appropriate governance structures to drive transparency and accountability
- Accelerate the close process
- Manage wider finance change interdependencies
- Increase user adoption
- Provide hyper care support
- Enable continuous improvement and automation