

## Tax Technology Consulting and Support (TTC)

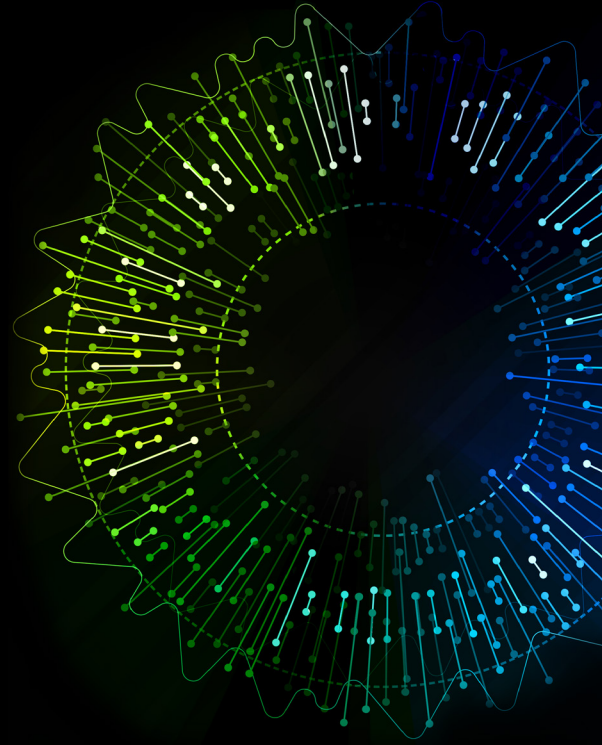
### Your strategic advisor for tax transformation in the Middle East region

The role of the tax function in businesses across the Middle East (ME) is rapidly evolving.

Under a backdrop of accelerated changes to the global tax landscape and worldwide regulatory and reporting requirements, the ME itself has transformed its own tax footprint remarkably in the last few years. The combination of these global and regional factors mean that the tax function of businesses operating in the ME region are more important than ever.

Cost pressures, efficiency in delivery, real time visibility of tax obligations, expert technical advice and implementation of a digital roadmap are just some of the competing priorities that need to be balanced by in-house tax and finance teams.

Deloitte's Tax Technology Consultancy and Support (TTC) team in the ME region can help assist your business with these issues plus much more, as well as partner with you to ensure your tax function, tax technology and processes are prepared to meet the needs of tomorrow.



# 2

#### ERP systems support and Tax advisory

- Design, implement, and maintain the Enterprise Resource Planning (ERP) systems from a tax perspective
- Set up tax requirements, identify necessary outcomes, crafting design options and providing support and advice throughout the implementation
- Review the existing systems related to tax compliance deliverables

# 3

#### Tax technology systems implementation

- Implement leading third party Direct and Indirect tax software, by gathering requirements
- Gather tax technology requirements, design and update processes, build and configure activities, test tax outputs, and train users
- Optimize system features, overall software maintenance and/or refresh and tune-up current tax software
- Provide technical administration and ongoing management of tax technology software including Robotic Process Automation (RPA), Indirect and Direct tax software

# 4

#### Tax data management, reporting and analytics

- Build reliable automated tax data models that harnesses automation
- Design of automated tax controls
- Evaluate and select tax technology
- Analyzing data to obtain accurate tax reporting and insights

# 1

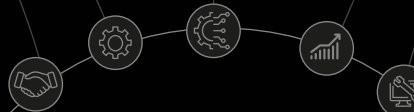
#### Tax process improvement and governance

- Evaluating, designing and/or implementing a tax policy and strategy
- Designing and/or optimizing clients tax operating models
- Understanding the roles and responsibilities of tax personnel
- Understanding, designing and implementing a tax control framework to minimize tax risks arising

# 5

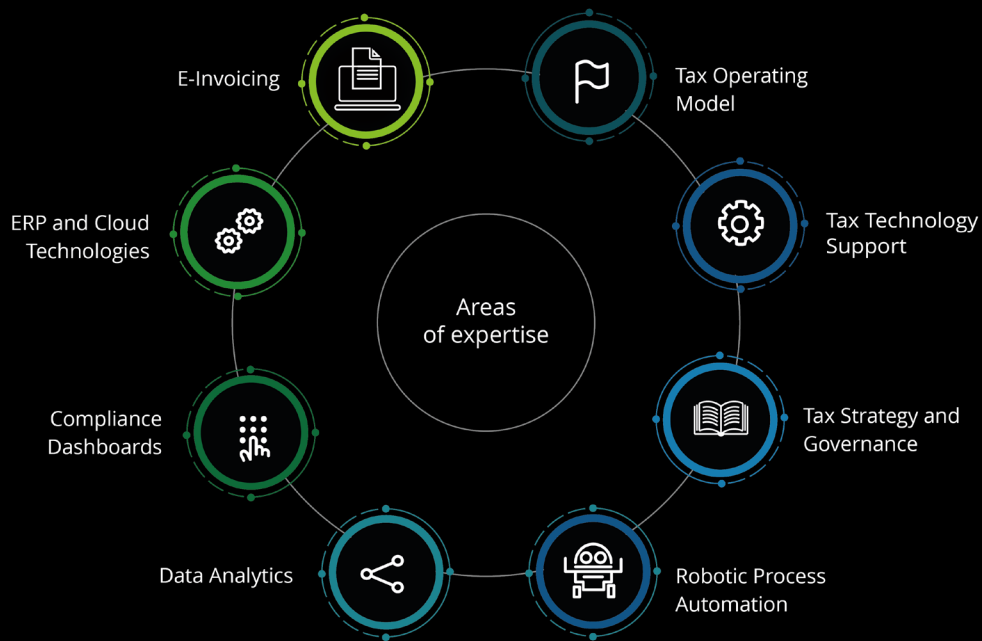
#### Finance Transformation and E-Invoicing

- Provide tax support in respect of Finance Transformations to ensure that tax is fully integrated and engaged in the overall Finance Transformation program
- Assess tax processes, systems & applications used for tax, provide recommendations and design tax processes empowered by technology
- Support Finance process improvements and technology improvements from a tax perspective to ensure that tax and statutory requirements are met (including E-Invoicing, E-Reporting etc.)



**How can the TTC team assist businesses in meeting their objectives?**

## TTC areas of expertise



## Meet our TTC team

Deloitte has a well experienced team based across the ME who works as part of our extensive global network of 2,200 tax professionals worldwide. Deloitte's TTC professionals can help you identify, design, implement, and maintain the tax systems you need to help your tax processes, governance, and risk management keep pace in a digital world. Our ME specialists can help develop, enhance and transform your approach to dealing with the challenges of multi-jurisdictional tax operations so your business is compliant and prepared for the future world of tax in the ME and beyond. For further information, please refer to our [website](#).



**Marjolein van Delft**  
Middle East TTC Leader  
[marvandelft@deloitte.com](mailto:marvandelft@deloitte.com)



**Doukje De Haan**  
Director  
[dodehaan@deloitte.com](mailto:dodehaan@deloitte.com)



**Elizabeth Livke**  
Director  
[ellivke@deloitte.com](mailto:ellivke@deloitte.com)



**Kenneth Lei**  
Director  
[kelei@deloitte.com](mailto:kelei@deloitte.com)



**Shankar Yedla**  
Senior Manager  
[shayedla@deloitte.com](mailto:shayedla@deloitte.com)



**Narinder Bhambra**  
Senior Manager  
[nabhambra@deloitte.com](mailto:nabhambra@deloitte.com)



**Luke Hutchings**  
Senior Manager  
[luhutchings@deloitte.com](mailto:luhutchings@deloitte.com)



**Salam El Bsateh**  
Senior Manager  
[selbsateh@deloitte.com](mailto:selbsateh@deloitte.com)

This publication has been written in general terms and therefore cannot be relied on to cover specific situations; application of the principles set out will depend upon the particular circumstances involved and we recommend that you obtain professional advice before acting or refraining from acting on any of the contents of this publication. Deloitte & Touche (M.E.) LLP ("DME") is the affiliate for the territories of the Middle East and Cyprus of Deloitte NSE LLP ("NSE"), a UK limited liability partnership and member firm of Deloitte Touche Tohmatsu Limited, a UK private company limited by guarantee ("DTTL"). Deloitte refers to one or more of DTTL, its global network of member firms, and their related entities. DTTL (also referred to as "Deloitte Global") and each of its member firms are legally separate and independent entities. DTTL, NSE and DME do not provide services to clients. Please see [www.deloitte.com/about](http://www.deloitte.com/about) to learn more. Deloitte is a leading global provider of audit and assurance, consulting, financial advisory, risk advisory, tax and related services. Our network of member firms in more than 130 countries and territories, serves four out of five Fortune Global 500® companies. Learn how Deloitte's approximately 410,000 people make an impact that matters at [www.deloitte.com](http://www.deloitte.com). DME would be pleased to advise readers on how to apply the principles set out in this publication to their specific circumstances. DME accepts no duty of care or liability for any loss occasioned to any person acting or refraining from action as a result of any material in this publication. DME is a leading professional services firm established in the Middle East region with uninterrupted presence since 1926. DME's presence in the Middle East region is established through its affiliated independent legal entities, which are licensed to operate and to provide services under the applicable laws and regulations of the relevant country. DME's affiliates and related entities cannot oblige each other and/or DME, and when providing services, each affiliate and related entity engages directly and independently with its own clients and shall only be liable for its own acts or omissions and not those of any other affiliate. DME provides audit and assurance, consulting, financial advisory, risk advisory and tax, services through 29 offices in 15 countries with more than 5,900 partners, directors and staff.