

The Deloitte logo is displayed in white, bold, sans-serif font. The word "Deloitte" is followed by a small green dot. The background features a dark green gradient with several overlapping, glowing green circles of varying sizes, creating a sense of depth and movement.

Deloitte.

Deloitte Cyber
Solutions for Cyber-powered people

September 2023

Table of contents

1	Introduction	<u>p. 3-5</u>	8	Identity	<u>p.12</u>
2	Cyber Strategy	<u>p.6</u>	9	Infrastructure Security	<u>p.13</u>
3	Application Controls & Security	<u>p.7</u>	10	Recover & Transform	<u>p.14</u>
4	Cyber Cloud	<u>p.8</u>	11	Resilience	<u>p.15</u>
5	Data & Privacy	<u>p.9</u>	12	Global Presence	<u>p.16</u>
6	Detect & Respond	<u>p.10</u>	13	Recognitions	<u>p.17</u>
7	Emerging Technologies	<u>p.11</u>	14	Contacts	<u>p.18</u>

Introduction

Trust is the cornerstone of every relationship.

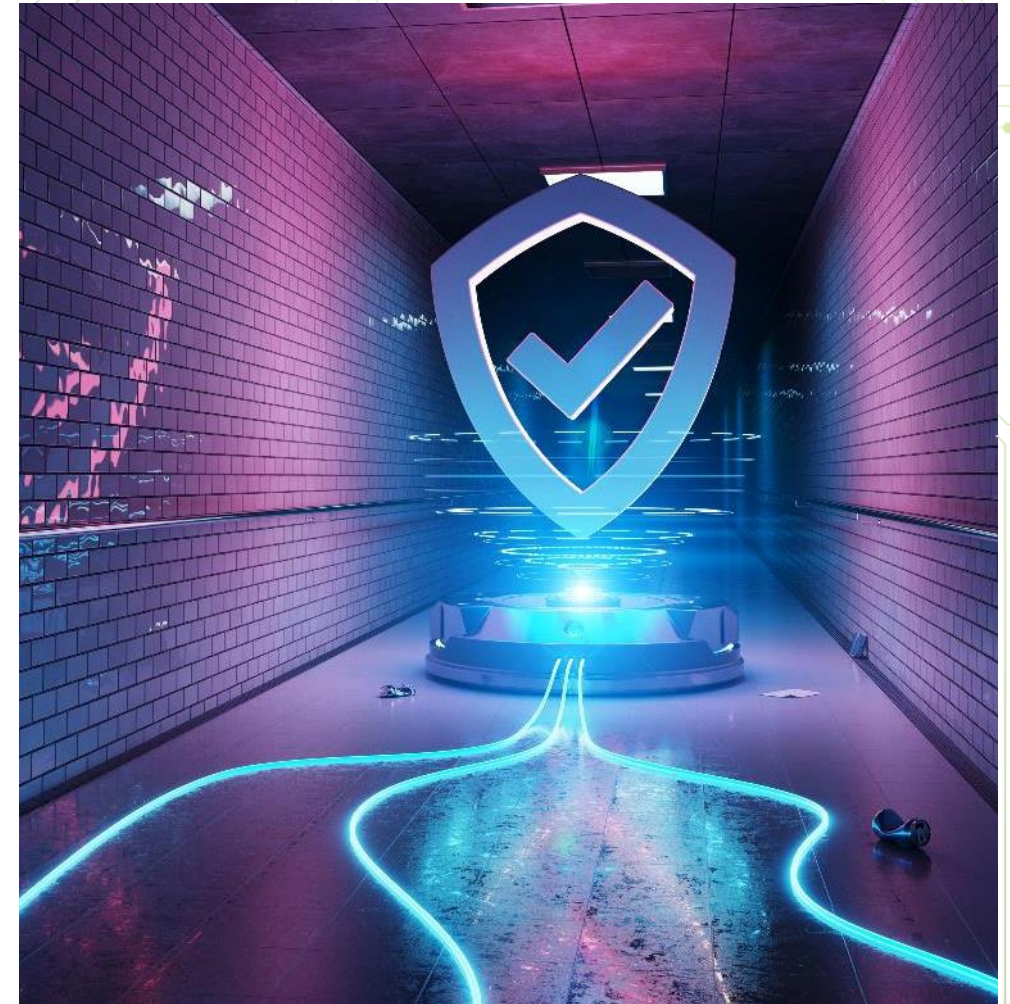
Trust is the cornerstone of every relationship.

It is the foundation for each interaction you have with employees, vendors, supply chain partners, and customers.

Whether you are handling transactional or personal data, we can help to make sure that it is gathered ethically, managed with integrity, and properly safeguarded. From this basis of trust, we will see that all the ways you work, collaborate and engage with stakeholders, remain sustainable and secure as you grow.

In this digital world, your reputation begins and ends with cyber. With cyber everywhere, it is a shared responsibility, right across your enterprise. Our deep experience with cyber enables us to build a culture of understanding, connection, and trust with you, your organization and your wider community.

By listening to your needs, Deloitte Cyber is uniquely equipped to help you navigate the evolving landscape for a successful future.



Introduction

We heard you when you asked

Deloitte Cyber understands your challenges and opportunities. We will work alongside you with a full range of services to help you foster innovation for secure and sustainable growth.

We are moving quickly on a number of digital transformation initiatives, **moving to the cloud and migrating systems**. Can you help us to make sure they are cyber secure?

How can we **create a future of trust** across the enterprise and with our customers?

How do I prepare our organization for and defend against **today's sophisticated cyberattacks**?

How do I manage **the complexity of compliance** with the evolving regulatory environment?

How do we effectively manage **the convergence of IT and OT** environments?

What do we need to do to **improve our existing security operations** to match the current threat landscape?

What are the **identity access requirements** around cloud or even a hybrid environment?

Our remote workforce means **1,000s of new devices and endpoints on our networks** and systems, how do we track and manage them all?



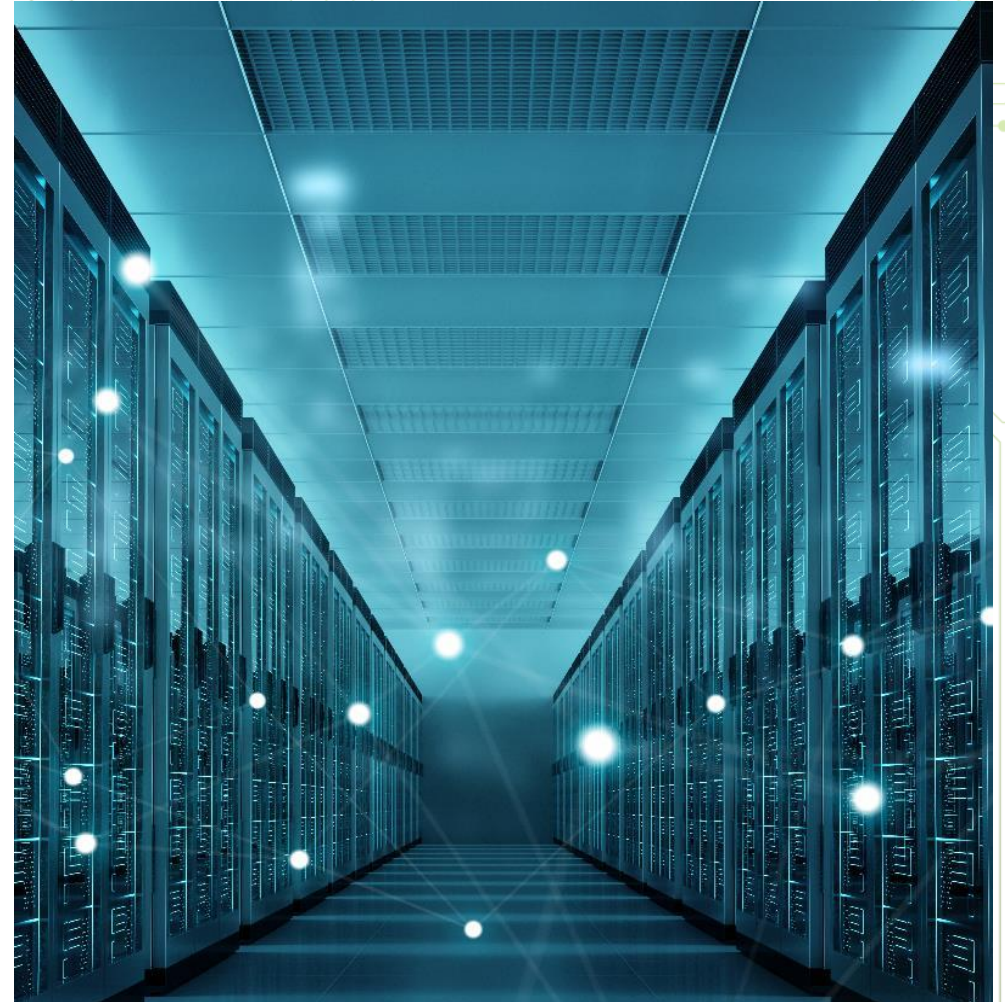
Introduction

Our focus on personal relationships, the breadth and depth of our experience, deep technology and product innovation enable us to bring stakeholders together for increased interoperability and impact.

Whatever your organization's strategic business priorities, we will see you improve threat awareness and visibility, and strengthen your ability to thrive in the face of cyber incidents.

No matter how complex your situation, we will always listen and work with you to address your questions and find the right answers for your unique needs.

We advise, implement and operate Cyber solutions where you need us most, across your entire enterprise.



Cyber strategy

Getting a clear picture of your cyber security needs is the first step towards mitigating risk.

We can help you develop a complete cyber security program. It begins with structuring the right incentives to ensure you adopt cyber assessment practices suited to your business needs.

We would utilize our proprietary **Deloitte Strategy Framework** to assess your current Cyber environment and benchmark it against the different peers to identify your ability in maintaining the confidentiality, integrity and availability critical business assets which we consider as your crown jewels.

Our Cyber Security team will establish the correct metrics and reporting methods so senior executives and your board can understand the ongoing results of your program. These will include determining the risks posed by your employees and third-parties as well as supply chain vulnerabilities.

Once we have the complete understanding of your environment, we would create a strategic transformation roadmap aimed at improving the organization's cyber resilience by decreasing the gaps between the current and target maturity of the relevant capabilities. The recommendations are analyzed to create prioritized projects with defined attributes.

Developing a cyber risk program in line with your organization's strategic objectives and risk appetite.

- Cyber Strategy.
- Cyber Operating Model.
- Cyber Academy.
- Cyber Program Management.
- Cyber Savvy Board.
- Cyber Risk Management.
- Cyber Risk quantification.
- Cyber Third-Party Risk Management.
- Cyber Training and Education.
- Cyber Culture Programs.



Contact [Abdallah El Chal](#) more information

Application Controls & Security

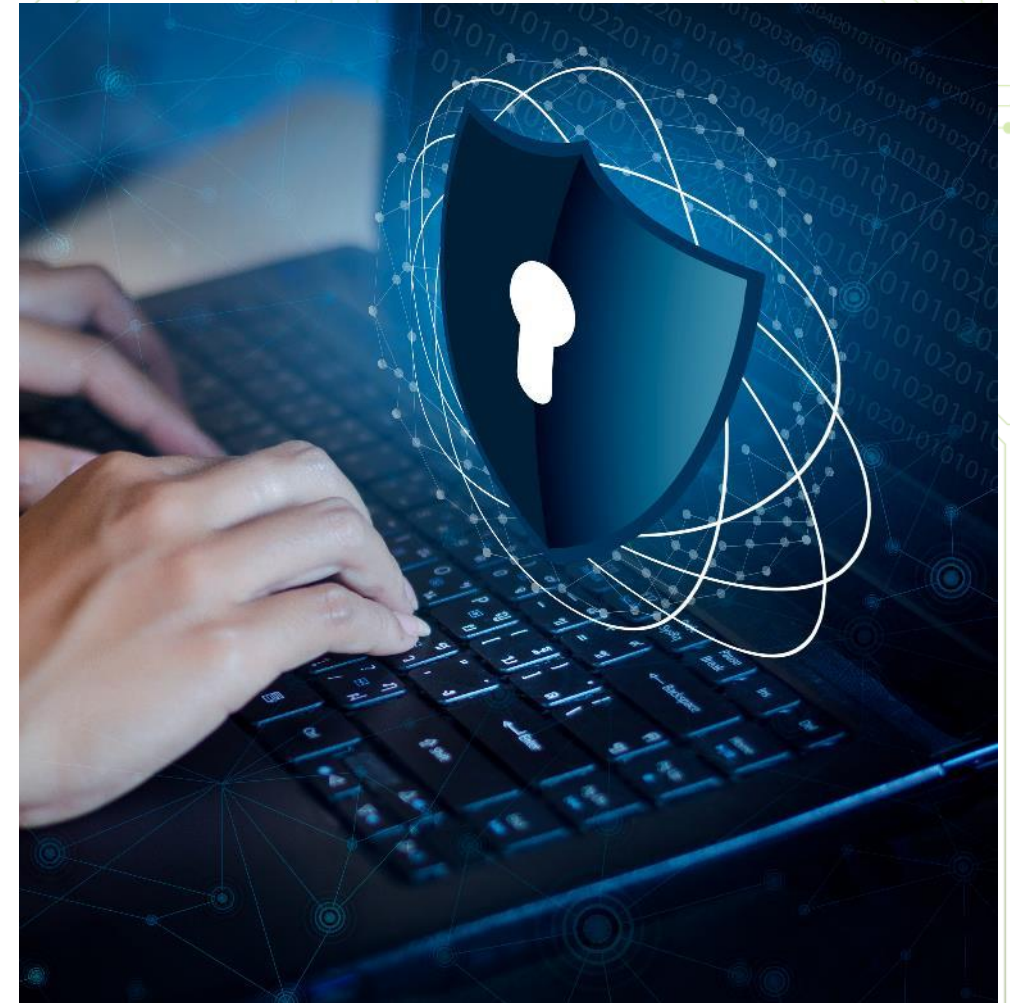
The more applications you run, the more you need a holistic approach to security.

We heard you when you said you need to achieve secure business transformation faster. That's why we provide cyber accelerators to speed up implementations that result in secure and well-controlled applications, whether migrating to new versions of ERPs such as SAP S/4 HANA and Oracle Fusions or undergoing a cloud transformation effort. We will help you to standardize processes and improve customer experience by more effectively managing identities across the application ecosystem.

Furthermore, from application controls perspective, each year we review a selection of important applications that entities rely on to perform its day-to-day operations and deliver services. We focus on the key controls that ensure data is complete, accurately captured, processed and maintained. This would help in preventing delays in services and loss of information, to possible fraudulent activity and financial loss.

Deploy a portfolio of Application Security solutions from strategy and implementation to managed services and operations that meet your security and compliance goals.

- Design & Implementation of Application Security Strategy & Governance framework.
- Design & implementation of Application Access & Process Controls.
- Implementation of Application Identity & Access Management Solutions.
- Design & Implementation of application data encryption tools.
- ERP Pre & Post implementation reviews.
- Operate Services for SAP GRC tools and S4 Security.
- Application Custom Code Review / Development.
- Operate services for SOX controls testing.
- Automate controls testing cycles through implementation of GRC & RPA.



Contact [Nader Farid](#) for more information

Cyber cloud

Moving to the cloud changes your perspective on risk.

The cloud is much more than a technology or a place. It's an opportunity to reimagine your organization's approach to data, a catalyst for transformation that drives growth and flexibility. But moving to the cloud also accelerates the need to create secure IT environments that support emerging technologies such as IoT, edge computing, AI and 5G. Our team of cloud professionals can help your organization embed cyber into your evolving cloud strategy. It means integrating cyber security into cloud capabilities to achieve business goals bringing transformation through the speed, resilience and scale of cloud solutions.

Deloitte Cyber can help. We bring Cyber + Cloud capabilities together with a deep understanding of shared responsibility models between the enterprise and cloud service provider. You will also benefit from our knowledge of the cloud threat landscape, as well as global and local regulatory and compliance requirements such as GDPR (General Data Protection Regulation), Dubai Cloud Service Provider (CSP) Security Standard, Microsoft Azure CSA Star, Protection of Personal Data (PDPL) in UAE, Abu Dhabi Government Data Management Standards and Data Management and Personal Data Protection Standards issued by NDMO – KSA.

We provide a wide range of innovative, end-to-end Cyber + Cloud capabilities tailored to our clients' environments while enabling significant and secure digital transformation.

- Cloud Security Strategy & Planning
- Attack Surface Management
- Secure Landing Zone/MVP
- Data Protection, Privacy & Resilience
- Cloud Service Provider Resilience & DR planning
- Cloud Security Assessment
- Cloud Data Governance
- Secure Digital Identity
- Security Architecture & Zero Trust
- Cloud Governance & Compliance



Contact [Simon Chandran](#) for more information

Data & Privacy

Building trust through responsible and ethical data use is fundamental for the sustainable success of your organization.

Privacy compliance is important, but our Data & Privacy team equally focuses on the opportunities that privacy legislation brings. We help organizations reap the benefits of their data in a responsible and ethical manner. The responsible use of data enhances trust, which helps build and maintain strong relationships with your customers/consumers and stakeholders, allowing for a competitive advantage.

Our Data & Privacy team assists you in gaining strategic insights from data to make informed decisions and seize opportunities. Transforming your privacy operations to deliver tailored, strategic, and compliant outcomes which help you unlock the potential of your data.

- Enable responsible and ethical digital interaction with customers/consumers while protecting their personal data.
- Enhance stakeholder trust and build stakeholder relationships.
- Support strategic decision-making by leveraging data insights.
- Reduce operational costs while demonstrating compliance.
- Protect critical data throughout your organization.

Deloitte Cyber offers a suite of data and privacy services to address data management opportunities and challenges.

- | | |
|---|---------------------------------|
| • Privacy by design | • Assessments |
| • Digital ethics and innovation | • Data Governance |
| • Data Privacy technologies | • Accountability and governance |
| • Data Analytics | • Trust experience |
| • Privacy training & awareness programs | • Data management |
| • Data Protection Impact | • Privacy assurance |



Contact [Ziad El Haddad](#) for more information

Detect & Respond

As cyberattacks grow in frequency and sophistication, you need to outsmart the cybercriminals.

With the ever-evolving landscape, it is imperative to “stay vigilant and ahead of the curve”. We provide state-of-the-art Cyber Detect & Respond (D&R) services to help you remain vigilant, build secure cyber defense capabilities, identify events and occurrences of interest, and prepare and respond to adversaries in the most efficient manner.

Deloitte Cyber delivers a blend of sophisticated monitoring technology, advanced analytics, and human intelligence to help you detect, analyze, and contain threats before they disrupt business.



Contact [Ali Khan](#) more information

Cyber Readiness and Response

- Digital Forensics and Incident Response (DFIR)
- Threat Hunting
- Cyber Compromise Assessment
- Purple Teaming Exercise
- Incident Response Plan Development
- Incident Response Maturity Assessment
- Cyber Readiness Assessment
- Ransomware Readiness Program
- Breach Readiness Assessment
- Tactical Response Procedures Development
- Table-Top Exercise

D&R Advisory and Implementation

- Security Operations Center (SOC) and Managed eXtended Detection and Response (MXDR) Assessments, Design, Build and Transfer
- Attack surface management
- Social Media Intelligence and Assessments
- Threat hunting
- D&R Specific toolset deployment and configuration for tools such as Security Information and Event Management (SIEM), Security Orchestration Automation and Response (SOAR), EndPoint Detection and Response (EDR), Cyber Threat Intelligence (CTI), etc..

D&R Operate

- Managed extended Detection and Response (MXDR)
- Managed Security Services (MSS)
- Cyber Threat Intelligence (CTI)
- Social Media Intelligence
- OSINT
- Business Intelligence

Emerging Technologies

Let Cyber enable your success.

Technologies are constantly evolving, revolutionizing our clients' businesses. We work with you so your business can thrive with access to all of those great, amazing, mind-blowing things that emerging technologies make possible.

As innovation accelerates, there is growing a convergence between Information Technology (IT) and Operational Technology (OT) environments. Together with connected devices, cyber will help you scale and increase your abilities to meet the needs of your customers.

An effective cyber solution for emerging technologies also helps you stay in control of cyber security risks not only within the operations environment – but throughout the connected products and services that power business. So, you can take full advantage of everything that digital transformation has to offer.

From Smart Cities, Connected Products, and OT, to 5G, AI Quantum Computing and beyond the horizon, our global Emerging Technologies team is here to help you get connected, stay connected, and connect to whatever the future makes possible.

- Connected products
- Industrial Control Systems (ICS)
- Innovation
- Internet of Things (IoT)
- Smart Cities
- Blockchain Security
- Artificial Intelligence Security



Contact [Tamer Charife](#) for more information

Identity

With your network affecting employees, customers and devices, knowing who and what you are hanging data with is paramount for all stakeholders.

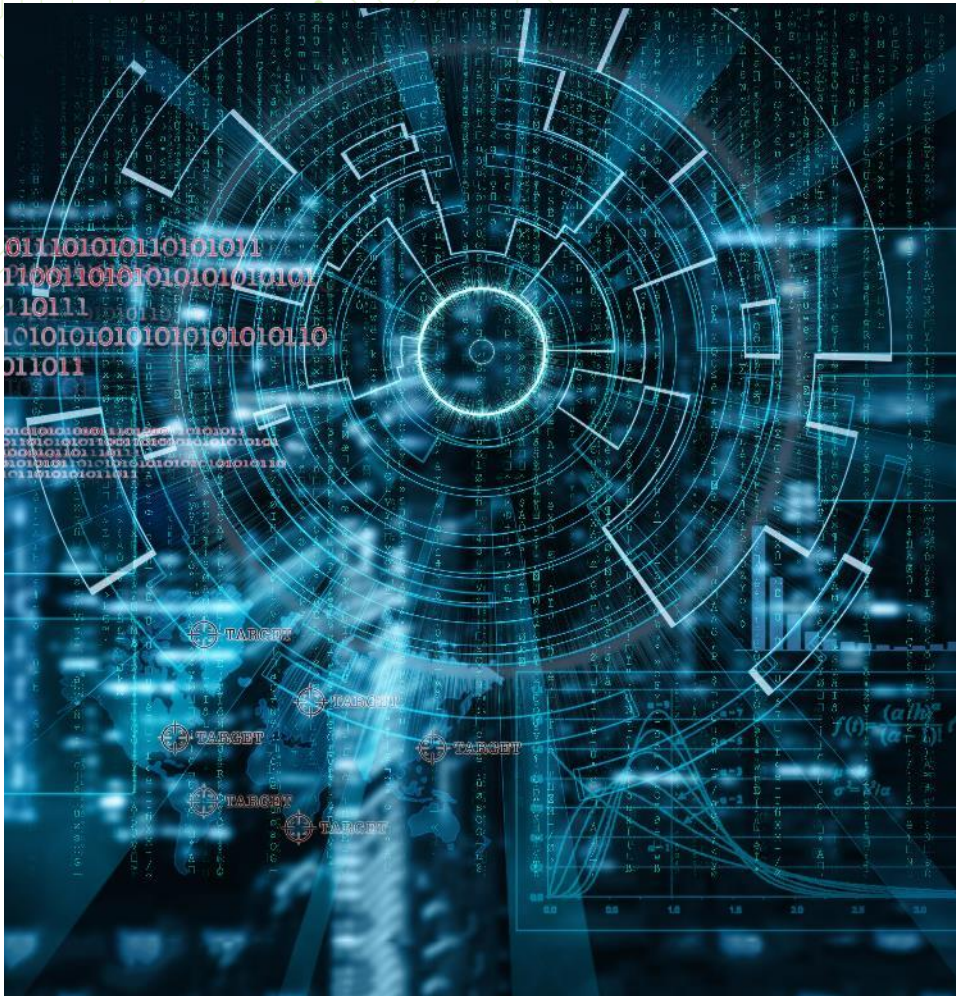
So, it's no surprise that Identity continues to be the leading attack vector for cyber criminals, with many organized crime groups exploiting weaknesses in consumer and enterprise Identity controls. Effective Identity access and governance is vital for presenting a compelling first contact point to your customers, protecting sensitive data, enabling secure transactions, and transforming business processes. Deloitte's strong relationships with leading Identity technology vendors, enables us to focus on continuous training and co-development, enabling you to go to market faster and with reduced risk.

Deloitte Cyber can advise, implement and operate a broad suite of Identity services with licensing and hosting terms built-in, so your team can focus on strategic business objectives rather than managing large complex identity environments.

With the breakdown of traditional walls blurring the distinction between the inside and the outside of an organization, establishing trust is paramount when it comes to managing the integrity of your business.

Deloitte Cyber brings 20+ years of experience across all Identity Management domains to help clients sustain, transform, and evolve their identity capabilities.

- Advanced authentication
- Consumer Identity
- Digital Identity
- Directory services
- Identity analytics
- Identity governance
- Privileged access management
- Identity Operate Services



Contact [Ziad El Haddad](#) more information

Infrastructure Security

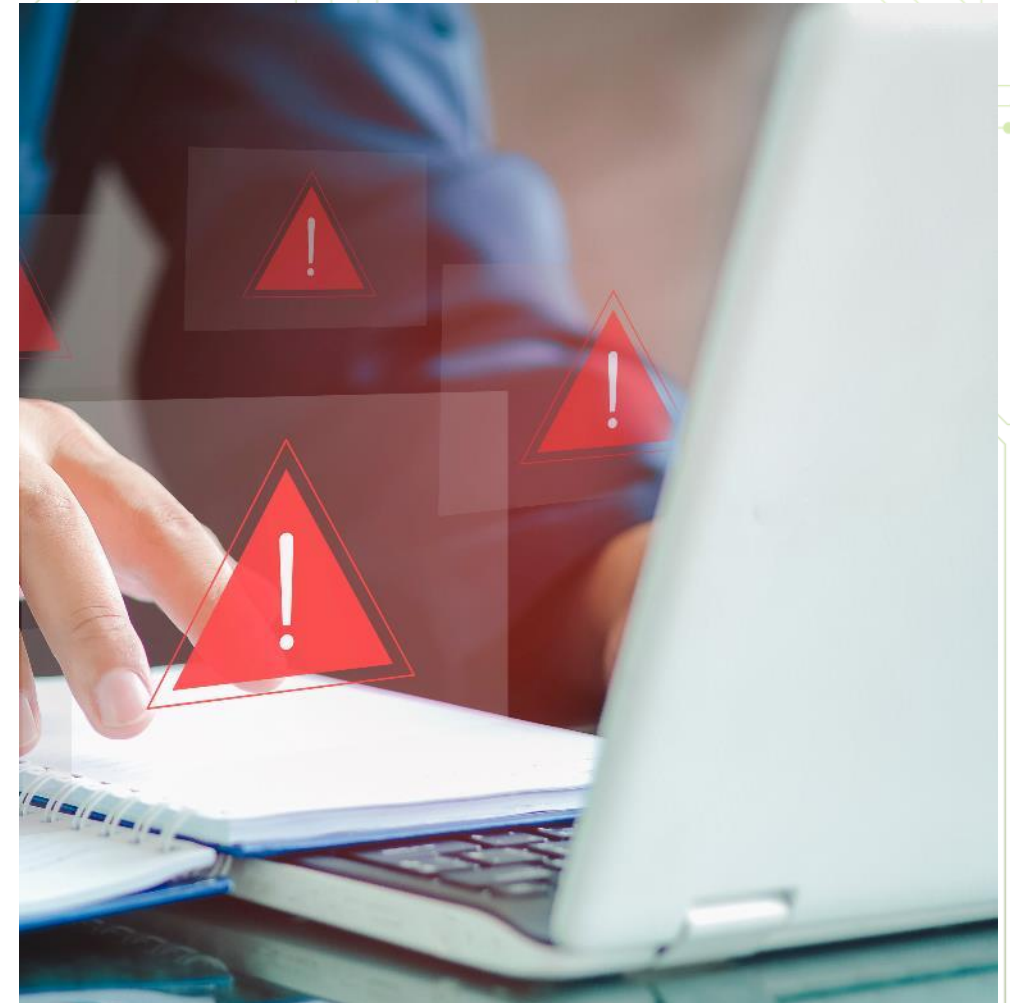
Strengthening and protecting your technical backbone.

Traditional infrastructure technologies and environments are being disrupted as they are driven to become more agile, reduce cost and simplify. At the same time, your ecosystem may have rapidly expanded through your newly remote workforce, your global supply chain and increasing dependence on the cloud. Together, these forces are an unwelcome stress test of your ability to track and manage your technology infrastructure.

As technology continues to revolutionize business—via automation, virtualization, hybrid data center and software defined networks—threats to operations become increasingly complex. It's vital to rethink how security is integrated across modern infrastructure: physical, network, servers and storage, and endpoints. Also, the changes brought by “anytime and anywhere access” mean adversaries are using new channels and vectors through modern infrastructure attack surfaces making device protection a core function of cyber security programs.

Solutions provided by our Infrastructure Security team bring resilience to your core technology and extended networks.

- Zero Trust Assessments
- Software Asset Management
- Security Configuration Reviews.
- Application and Network Architecture Reviews.
- Cloud Penetration Testing.
- Wireless Penetration Testing.
- Web Application Penetration Testing.
- Mobile Application Penetration Testing.
- Red Teaming Assessments.
- Research & Development / Experimental Development.
- Development.
- Source Code Review.
- Database Security Assessment.
- Active Directory / O365 Assessment.
- Application Security.
- Network Architecture Reviews.
- Infrastructure Penetration Testing.



Contact [Ali Khan](#) more information

Recover & Transform

In the wake of a cyber incident, you can take a bad situation and emerge stronger.

There are no longer isolated cyber incidents or attacks targeted at specific industries. They are happening across industries and geographies. Today's cyber adversaries are organized and use sophisticated tools. As we become more digital, more connected, the risk of cyberattack increases exponentially. It's important to understand what is happening, why it's happening, and how Deloitte can help. Effective management and smooth recovery from cyber incidents only happen with careful preparation. Deloitte Cyber will work with your teams to help you prepare, practice and protect what matters most.

We bring the right balance between protection and recovery mechanisms to help you defend and recover when an attacker breaches security. We recognize this balance is different for every industry and client.

We will help you prepare for the unknown, test and strengthen your response plans, and be there to help you through whatever may come your way. Should any incident occur, we will help you recover your systems, restore your reputation and partner with you to regain market share, and emerge more resilient than before.

Recover to the future, not the past, with our end-to-end incident response services. We see you through to greater resilience and a mature state of cyber security, ensuring continual improvement of your underlying infrastructure and capabilities.

- Business recovery
- Cyber transformation
- Digital forensics
- Incident response
- Technical investigation
- Technical resilience



Contact [Tariq Ajmal](#) more information

Resilience

Helping you to identify and be prepared to respond to threats before they strike.

It is a fact: the more resources you rely on, the more risk you are exposed to. However, you need those people, facilities, systems, data and business parties in order to do business. The reliability and continuity of these operations are critical to your business survival and to building competitive advantage. The challenge comes in managing the complexity of these operations across multiple entities as you integrate business partners, suppliers and even competitors. Recent events have highlighted the vulnerabilities of businesses around the world.

Consider how the following events could negatively affect your organization's strategic objectives, reputation, revenue stream, etc.:

- Cyberattacks, e.g. hacking, ransomware, denial-of-service attacks
- Loss of critical data and/or information
- Technological failures
- Failure of a key third party arrangement
- Major workforce disruption, e.g. due to a pandemic or strike
- Power failure
- Natural and infrastructure disasters
- Acts of terrorism

The need for an effective Business Continuity Management (BCM) program has never been so evident.

Deloitte has assisted many of the world's largest organizations to plan and prepare for unexpected events by offering the below services:

- Business Continuity Management Systems' implementation and review
- Crisis Management framework development and reviews
- Crisis readiness and preparedness assessments



Contact [Tariq Ajmal](#) more information

Global presence

Global service, delivered locally

Cyber connects everyone in your organization, wherever they are located.

Around the world, we can help you shape smarter processes and platforms with greater insight, agility and resilience to threats.

Our global network gives us the depth and breadth of experience in dealing with many of the world's toughest cyber issues while tailoring our offering to meet your regional needs.

Deloitte's Operate services support the business need for hosted and managed security solutions across the spectrum of enterprise-wide Cyber capabilities. The strategy is built around a global network of five Regional Delivery Centers in collaboration with 30+ local Cyber Centers. This network allows us to be a global partner, maintaining a local approach to tailor our offering to the needs of the client in each country.

By seeing that Cyber works effectively for each person we help you grow a culture of safety and trust, so your entire business can move forward with confidence.



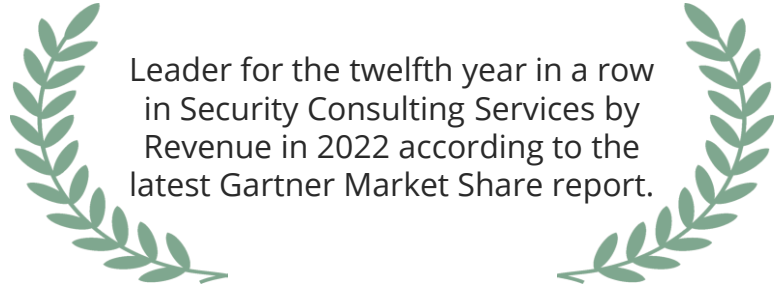
Deloitte's Operate strategy is built around a global network of Regional Delivery Centers in collaboration with local Cyber Centers.

- Asia Pacific
- Australia
- Middle East
- North America
- South America



Recognitions

A recognized leader in Cybersecurity



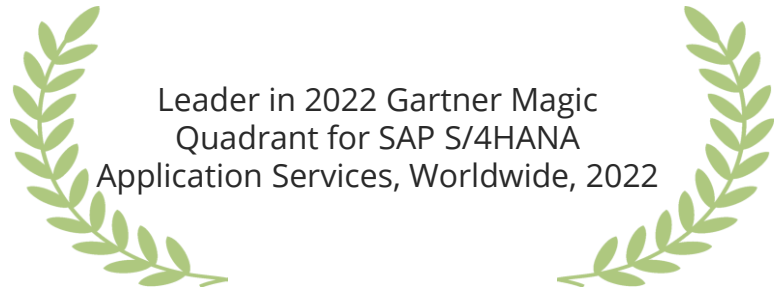
Leader for the twelfth year in a row in Security Consulting Services by Revenue in 2022 according to the latest Gartner Market Share report.



Ranked #4 by Revenue in 2022 in the Gartner Managed Security Services Market Share report.



Leader in 2022 Gartner Magic Quadrant for Public Cloud IT Transformation Services placing highest on Ability to Execute and furthest on Completeness of Vision, 2022



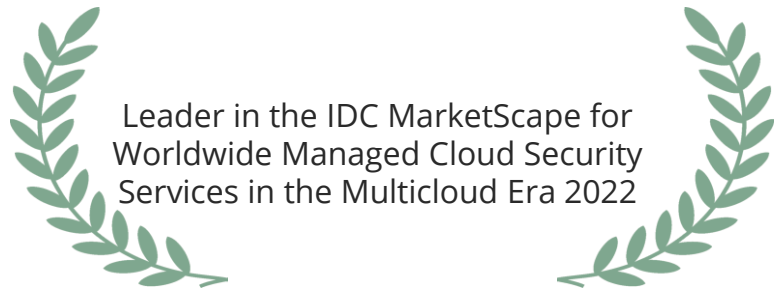
Leader in 2022 Gartner Magic Quadrant for SAP S/4HANA Application Services, Worldwide, 2022



Recognized as a Leader in IDC MarketScape: Worldwide Managed Cloud Security Services in the Multicloud Era Vendor Assessment, 2022



IDC MarketScape for Worldwide Managed Cloud Security Services in the Multicloud Era 2022



Leader in the IDC MarketScape for Worldwide Managed Cloud Security Services in the Multicloud Era 2022



Leader in The Forrester Wave Cybersecurity Incident Response Services, 2022



Leader in Gulf Cooperation Council Professional Security Services, IDC MarketScape 2021

Contact Our Cyber Partners



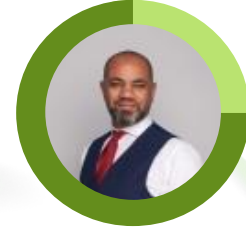
Tariq Ajmal
tajmal@deloitte.com



Ziad El Haddad
zhaddad@deloitte.com



Fadi Mutlak
fmutlak@deloitte.com



Hesham El Attar
halattar@deloitte.com



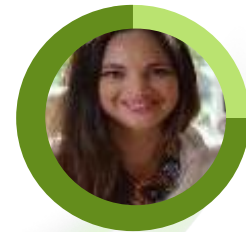
Tamer Charife
tcharife@deloitte.com



Simon Chandran
simonchandran@deloitte.com



Nader Farid
nafarid@deloitte.com



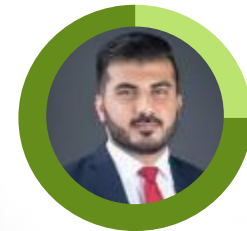
Katie Dicon
kdiacon@deloitte.com



Dr. Amira Khattab
akhattab@deloitte.com



Abdallah El Chal
aelchal@deloitte.com



Ali Khan
alikhan@deloitte.com

This publication has been written in general terms and therefore cannot be relied on to cover specific situations; application of the principles set out will depend upon the particular circumstances involved and we recommend that you obtain professional advice before acting or refraining from acting on any of the contents of this publication.

Deloitte & Touche (M.E.) LLP (“DME”) is the affiliate for the territories of the Middle East and Cyprus of Deloitte NSE LLP (“NSE”), a UK limited liability partnership and member firm of Deloitte Touche Tohmatsu Limited, a UK private company limited by guarantee (“DTTL”).

Deloitte refers to one or more of DTTL, its global network of member firms, and their related entities. DTTL (also referred to as “Deloitte Global”) and each of its member firms are legally separate and independent entities. DTTL, NSE and DME do not provide services to clients. Please see www.deloitte.com/about to learn more.

Deloitte is a leading global provider of audit and assurance, consulting, financial advisory, risk advisory, tax and related services. Our network of member firms in more than 130 countries and territories, serves four out of five Fortune Global 500® companies. Learn how Deloitte’s approximately 410,000 people make an impact that matters at www.deloitte.com.

DME would be pleased to advise readers on how to apply the principles set out in this publication to their specific circumstances. DME accepts no duty of care or liability for any loss occasioned to any person acting or refraining from action as a result of any material in this publication.

DME is a leading professional services firm established in the Middle East region with uninterrupted presence since 1926. DME’s presence in the Middle East region is established through its affiliated independent legal entities, which are licensed to operate and to provide services under the applicable laws and regulations of the relevant country. DME’s affiliates and related entities cannot oblige each other and/or DME, and when providing services, each affiliate and related entity engages directly and independently with its own clients and shall only be liable for its own acts or omissions and not those of any other affiliate.

DME provides audit and assurance, consulting, financial advisory, risk advisory and tax, services through 29 offices in 15 countries with more than 5,900 partners, directors and staff.

© 2023 Deloitte & Touche (M.E.). All rights reserved.

The background is a dark green gradient. In the center, there is a small, bright green dot. Surrounding this dot are several concentric, glowing green circles of varying radii. The circles are semi-transparent, allowing the background and other circles to be seen through them. The overall effect is a sense of depth and focus on the central point.

Thank you.