



iDeal – defining M&A analytics

An M&A analytics solution that provides deeper, more meaningful insights from data to deliver real-time answers and analyses throughout the M&A lifecycle.

The Mergers & Acquisition (M&A) lifecycle is awash in data. It starts long before the diligence phase and picks up steam when companies share, solicit, and parse information for go or no-go decisions. But the entire M&A lifecycle—negotiations and post-deal, in addition to diligence—is marked by the need to make smarter decisions at light speed with a high level of confidence in order to avoid doing a deal you might regret.

That's where Deloitte's M&A analytics capabilities can make all the difference. We have developed iDeal, an M&A-centric approach to analytics that focuses on developing insights at every step of the M&A lifecycle—at the moments they're needed most. This is not a handful of disconnected point solutions. iDeal is an integrated system of analytics, a set of tools and approaches for extracting insights from a target's M&A data and using that to inform decisions both large and small.





Drill down

Historically, M&A decisions have often been based on high-level trends—strong sales quarters or impressive margins, for example. But what’s the real story behind the numbers? What’s really going on? Sometimes leaders find out only when it’s too late, when the strong quarter was just an anomaly based on a one-time event or when seemingly high margins cloaked hidden weaknesses elsewhere. Time is often the culprit. With more time, the thinking goes, we could have secured the information we needed, discovered these issues, and used them to our advantage in the deal. In reality, you need the ability to go deep into the data to find subtle nuances and hidden nuggets of information that could change the course of the deal—in real time. That is the core of iDeal’s capabilities.



How we can help

Deloitte M&A is recognized around the world for its leadership in M&A, from strategy and execution to integration and divestiture—a thorough range of experiences and capabilities. Similarly, Deloitte Analytics has emerged as one of the most important forces in analytics today, serving global clients across industry with a range of advanced services and capabilities. So it’s natural that we combined our strengths in these two areas to create the most complete approach to deal-related analytics available today.



iDeal

is a combination of tools, processes, and techniques integrated to provide big-picture insights with a microscopic level of detail. We help clients put those capabilities to work through:



Strategy



Implementation



Analysis and decision support



Integration



Synergy capture



Bottom-line benefits

iDeal’s capabilities can generate game-changing benefits for companies when it matters most. Here are a few of those most frequently cited benefits by clients.



Get there faster. In M&A, insights are most useful when they are generated in time to influence decision making. With intuitive interfaces and near real-time insight delivery, iDeal makes it easier to generate and leverage insights.



Enhance the value of data. Today, many M&A analytics insights are used for highly focused moments or decisions. But the value of the data used in these scenarios, combined with data from elsewhere, can have an equally important impact in other phases of the lifecycle, such as integration and post-integration.



Go deeper. Too often, surface-level data tells a misleading tale. With the ability to analyze micro-level details and correlate them to macro-level decisions, M&A leaders are better equipped to uncover the real story behind the numbers.



Accelerate the sales and purchase agreement (SPA) process. The process of nailing down an SPA typically engages a wide range of time-strapped participants in a race to complete the agreement. It’s a process that can be inefficient and time-consuming—when time is of the essence. iDeal makes it easier to analyze more data and deploy it in a more intelligent manner. Not only is it faster, it’s smarter.



Smarter questions, smarter answers

M&A analytics is all about asking—and answering—smarter questions throughout the M&A lifecycle. Using iDeal, here are some of the types of questions you could be answering today:



Diligence

- What is the true source of this company's growth? Specific customer segments? Products? Markets? Something else?
- How successful is this company in retaining its customer base?
- Where are margin trends negatively impacted by specific products, locations, or customers?



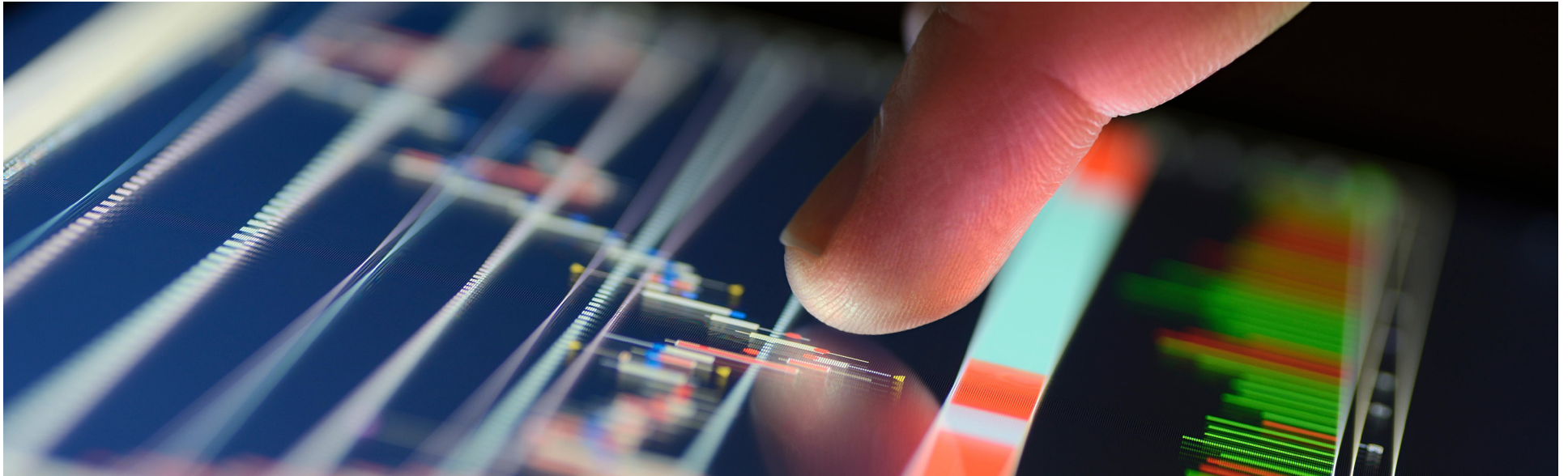
Negotiations

- What is the specific net impact of decisions reflected in our purchase agreement?
- Which risks are we likely to encounter in doing this deal? (Operational risks, critical employees, SKUs, product lines, geographies, etc.)
- Which employees and customers should be covered by non-compete agreements?



Post-deal

- Where should we pursue renegotiations with customers or suppliers to quickly achieve cost savings or revenue improvements?
- How are customers responding to the change in ownership? How has our risk profile changed as a result?
- What are the results of changes made to the business after the closing of the deal?



Contacts

For more information on how Deloitte M&A is focused on helping clients with strategy, execution, integration, and divestitures please visit: www.deloitte.com/us/ideal.

Brian Bird
Managing Director
M&A Transaction Services
Deloitte & Touche LLP
bwbird@deloitte.com

Andy Wilson
Partner
M&A Transaction Services
Deloitte & Touche LLP
andwilson@deloitte.com

Iain Bamford
Principal
M&A Consulting Services
Deloitte Consulting LLP
ibamford@deloitte.com

Russell Thomson
National Managing Partner
M&A Services
Deloitte & Touche LLP
rthomson@deloitte.com

Deloitte.

This publication contains general information only and is based on the experiences and research of Deloitte practitioners. Deloitte is not, by means of this publication, rendering business, financial, investment, or other professional advice or services. This publication is not a substitute for such professional advice or services, nor should it be used as a basis for any decision or action that may affect your business. Before making any decision or taking any action that may affect your business, you should consult a qualified professional advisor. Deloitte, its affiliates, and related entities shall not be responsible for any loss sustained by any person who relies on this publication. As used in this document, "Deloitte" means Deloitte Consulting LLP, a subsidiary of Deloitte LLP. Please see www.deloitte.com/us/about for a detailed description of the legal structure of Deloitte LLP and its subsidiaries. Certain services may not be available to attest clients under the rules and regulations of public accounting. Copyright © 2016 Deloitte Development LLC. All rights reserved. Member of Deloitte Touche Tohmatsu Limited.