

Deloitte.



Turnaround & Restructuring Services

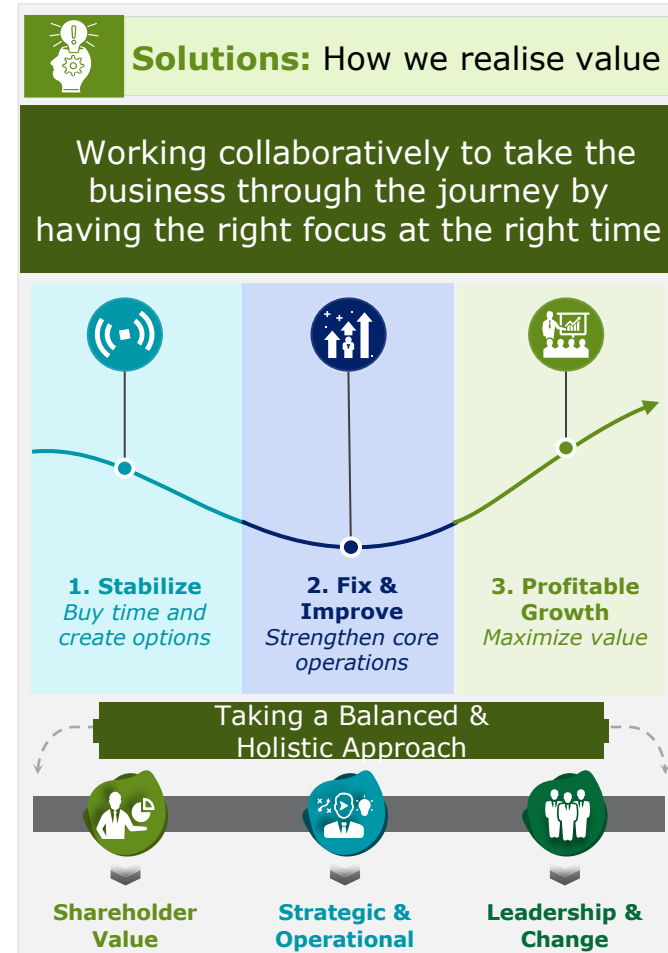
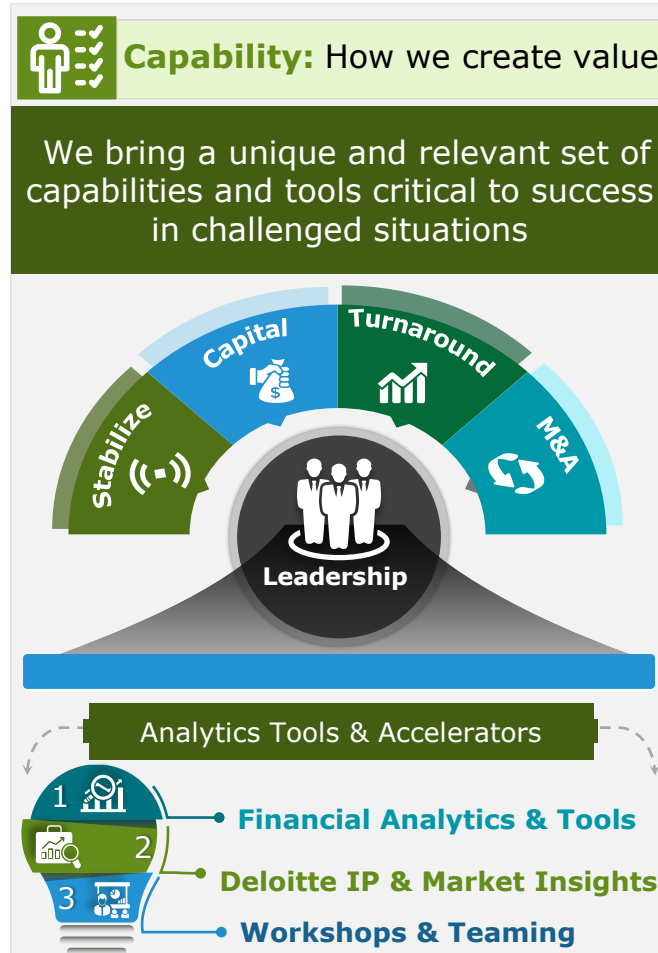
2021



MAKING AN
IMPACT THAT
MATTERS
since 1845

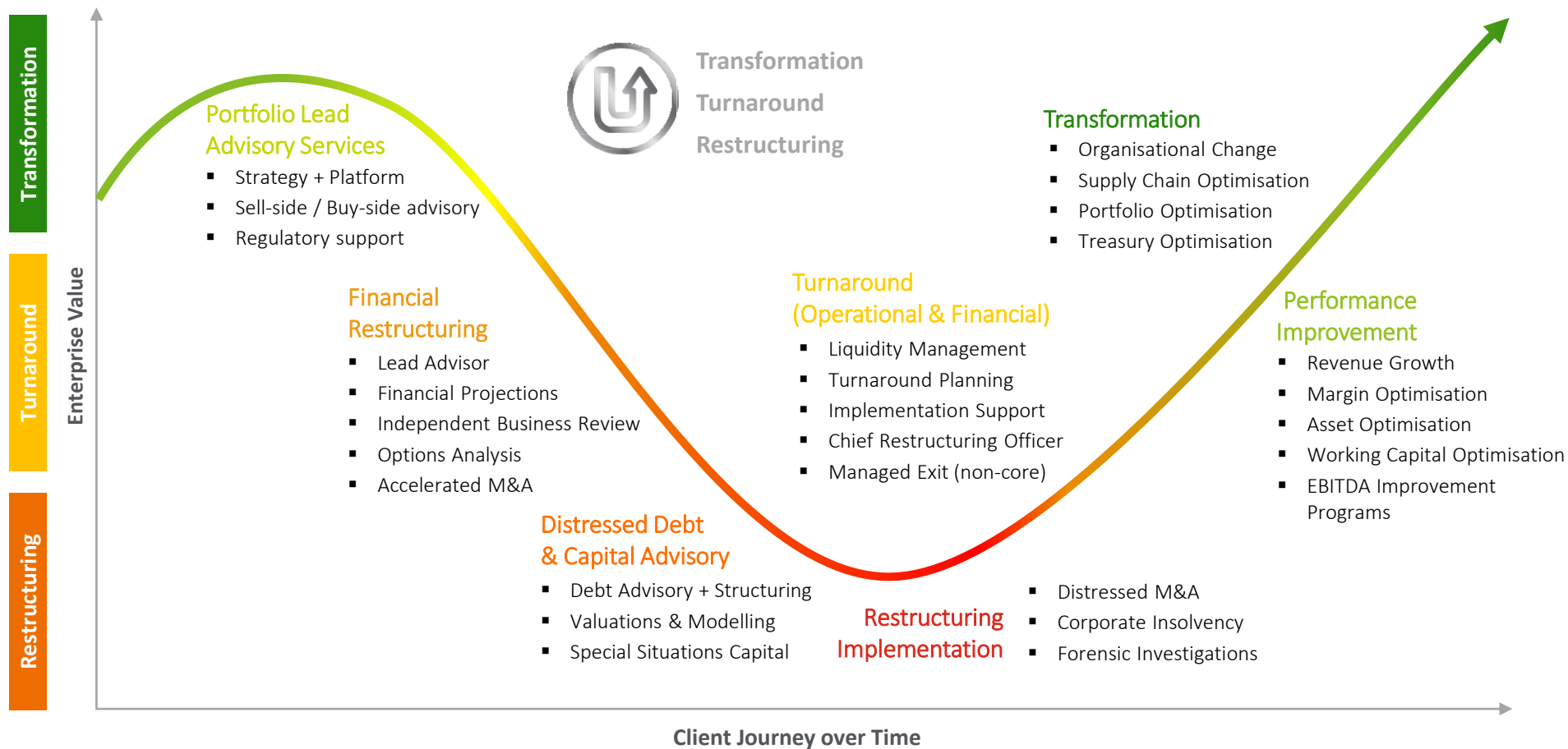
Who we are

By connecting global insight and deep industry knowledge, we provide specialist services to help stakeholders navigate challenging times, stabilize their position and unlock or preserve value.



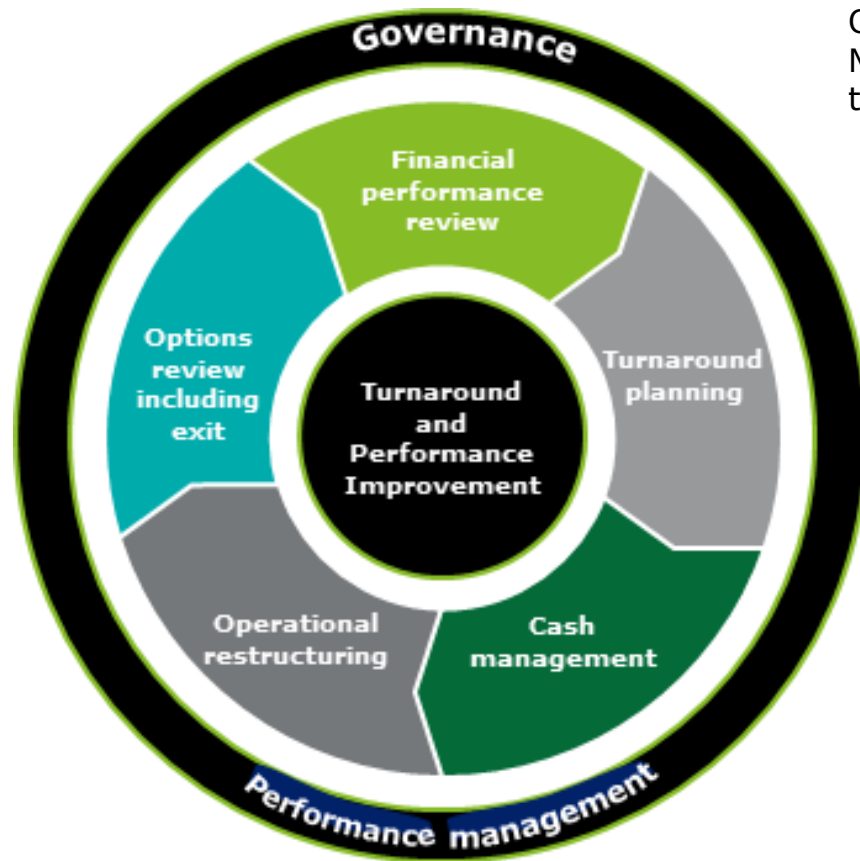
What we do

We work with businesses to improve value outcomes across the spectrum ranging from companies seeking to turnaround short-term under-performance to those in deep financial distress requiring crisis management. We are actively helping businesses in Southeast Asia to turnaround, restructure, transform and grow their businesses.



Turnaround & Performance Improvement

When companies are facing financial, operational and/or industry challenges, CFOs & CEOs and their Boards need to act decisively to ensure that stakeholder value is protected. Our dedicated Turnaround & Performance Improvement team is able to offer support with a distinct range of services individually tailored to each situation.

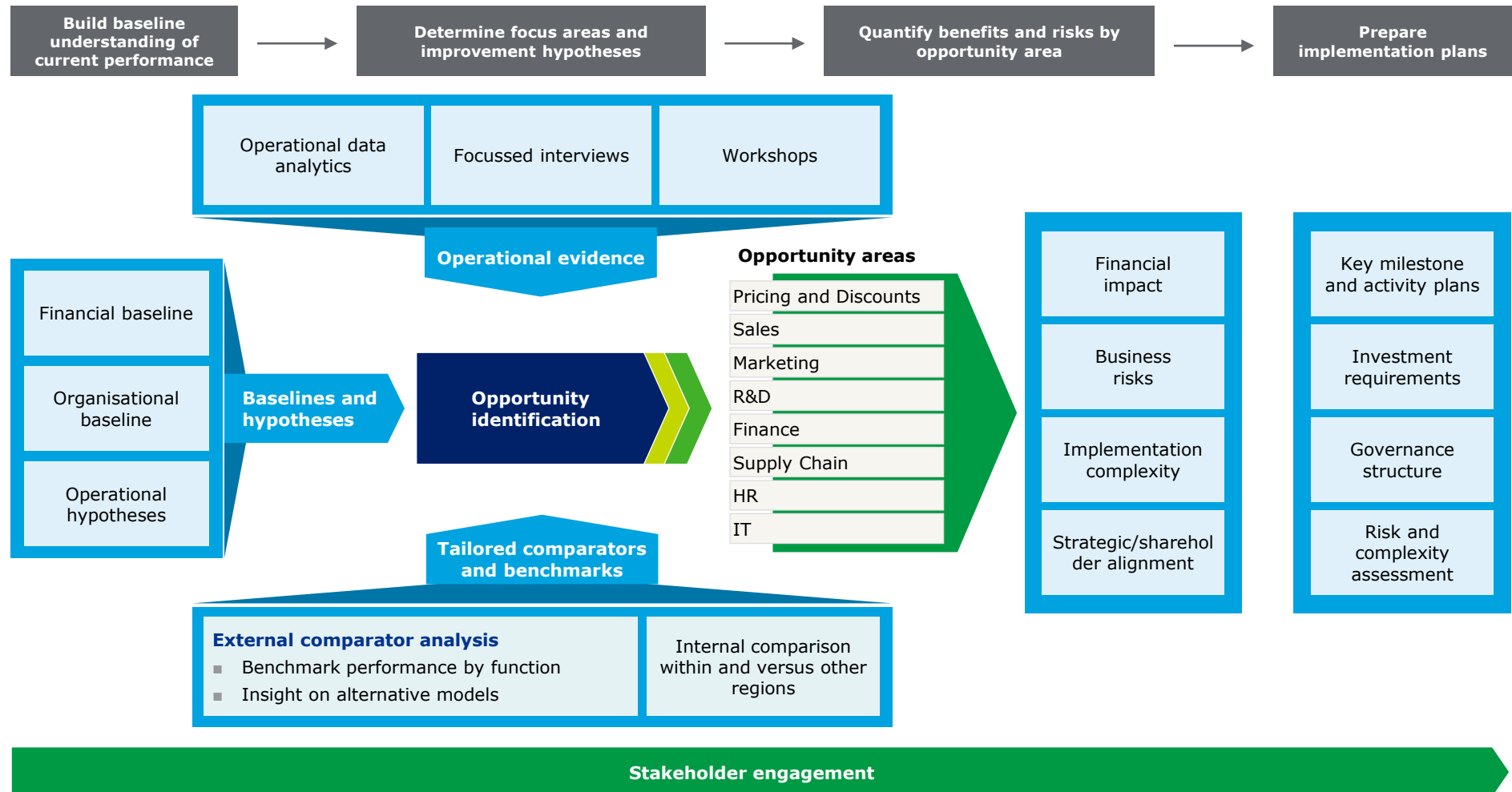


Our team provides advice and support to Executive Management and Boards to diagnose specific issues affecting the business and 'size the prize'.

- Prepare a financial and operational turnaround plan with clear objectives and actions.
- Implement performance improvement actions, which include both revenue enhancement and cost reduction.
- Support the CFO to ensure the finance function acts as a valued 'business partner' to help operational management make informed decisions.
- Optimize liquidity through effective cash flow forecasting and management.
- Assess strategic options and support the sale or wind down of non-core assets.
- Enhance governance framework and controls to instill accountability and transparency.

Turnaround & Performance Improvement – Generic Approach

We combine analytical rigour and a gated approach to (i) create transparency, (ii) respectfully challenge ways of thinking and (iii) drive decision making that rapidly unlocks value



お問い合わせ先

何かございましたら、お気軽に連絡ください。



Associate Director

谷口 純平

日系企業サービスグループ ファイナンシャルアドバイザー

Email: jumtaniguchi@deloitte.com

Tel: +66 80 296 0250

経歴

- 2016年Deloitteに入社、BDDを踏まえた戦略策定及びPMI/PMO、各関係者の調整やスピード感を持ったプロジェクト推進で特に高い評価を得ている。
- Deloitte入社以前は商社で投融資業務に従事し、財務分析や買収後の子会社管理に携わる。

主な実績・担当セクター

- 大手ファンド向けBDD、消費者アンケート等に基づく事業拡大方向性の検討。
- 総合商社におけるクロスボーダー案件、BDD・PMI責任者として本社及び現地メンバーを巻き込んだ大規模プロジェクトの推進。
- 金融系モビリティ企業の統合、プロジェクトマネジメント及び統合新会社の業務設計の推進。

執筆、講演

- M&A戦略及びPMIセミナー (外部講演実績 多数)
- タイビジネス雑誌ArayZへの寄稿: ストーリーで学ぶM&Aの基礎



Deloitte refers to one or more of Deloitte Touche Tohmatsu Limited (“DTTL”), its global network of member firms, and their related entities. DTTL (also referred to as “Deloitte Global”) and each of its member firms and their affiliated entities are legally separate and independent entities. DTTL does not provide services to clients. Please see www.deloitte.com/about to learn more.

Deloitte is a leading global provider of audit and assurance, consulting, financial advisory, risk advisory, tax & legal and related services. Our global network of member firms and related entities in more than 150 countries and territories (collectively, the “Deloitte organisation”) serves four out of five Fortune Global 500® companies. Learn how Deloitte’s approximately 312,000 people make an impact that matters at www.deloitte.com.

Deloitte Asia Pacific Limited is a company limited by guarantee and a member firm of DTTL. Members of Deloitte Asia Pacific Limited and their related entities, each of which are separate and independent legal entities, provide services from more than 100 cities across the region, including Auckland, Bangkok, Beijing, Hanoi, Ho Chi Minh City, Hong Kong, Jakarta, Kuala Lumpur, Manila, Melbourne, Osaka, Shanghai, Singapore, Sydney, Taipei, Tokyo and Yangon.

About Deloitte Thailand

In Thailand, services are provided by Deloitte Touche Tohmatsu Jaiyos Co., Ltd. and its subsidiaries and affiliates.

This communication contains general information only, and none of Deloitte Touche Tohmatsu Limited, its member firms, or their related entities (collectively, the “Deloitte Network”) is, by means of this communication, rendering professional advice or services. Before making any decision or taking any action that may affect your finances or your business, you should consult a qualified professional adviser. No entity in the Deloitte Network shall be responsible for any loss whatsoever sustained by any person who relies on this communication.