

The image features a dark blue background with a complex network of glowing white and light blue lines and dots, resembling a digital or data network. The lines are thin and interconnected, creating a sense of global connectivity. The dots are small and bright, scattered throughout the network. The overall aesthetic is futuristic and technological.

Deloitte.

Accessing Global Talent
Embracing the New Era

Accessing Global Talent - Embracing The New Era

Much is currently being written by journalists, business leaders, academics, and management consultants on the increasingly complex and diverse world of talent. We are being warned of the 'Great Resignation', that the "global jobs market recovery has 'gone into reverse' "(1), and are being asked "are employers heading for a talent shortage perfect storm?"(2). But what are the causes of these issues and how can organisations respond to the changing face of talent management?

In a recent 2022 CEO Deloitte survey, chief executives reported optimism about growth amidst uncertainty marked by talent supply chain disruptions and the continuing effects of the COVID-19 pandemic. Talent remains a top concern for CEOs, with 71% of CEOs citing global labour/skills shortage as their top external challenge to their business strategy(3). From a global talent perspective, there are generally five key forces creating a perfect storm for change and the race for talent:

1. Changes in the workforce: there are now four generations in the workforce, each with their own dreams, expectations, and worries about the future. Understanding these groups is key to attraction and retention strategies.

2. The Digital Age: technology is allowing us to do things we never thought possible before at exponential speed. Increasing numbers of operational tasks are being automated, with organisations becoming more focused on digital. However, there is simply not enough core technology and digital skills related talent to keep up with demand. At the start of the COVID-19 pandemic, the World Economic Forum estimated that 50% of the existing workforce will need to reskill by 2025.(4)

3. The shifting geopolitical climate: the trade and immigration landscapes are becoming increasingly complex, and that complexity has been increased by measures taken in response to COVID-19 and political conflicts.

4. The rise of (domestic and international) remote work and increasingly dispersed talent: the technology required to work remotely for large numbers of office-based employees has been possible for many years, but only through the COVID-19 pandemic did it become a cultural possibility, and some would argue a health/wellness necessity. Many employees are finding they can live in locations without a physical proximity to traditional places of work and employers are finding new talent outside of their historical 'catchment' areas/countries.

5. Evolving employee expectations: increasingly employees expect empathy, inclusivity, equity, and a 'consumer-grade experience'(5) in the workplace. Career trajectories are shifting from a traditional linear approach to more agile curated portfolios of roles and experiences. CEOs are becoming increasingly aware of this and a recent survey reported the top three areas they feel that their organisations lack stakeholder trust on as: (1) Diversity, equity and inclusion (41%), (2) employee experience (30%), and (3) innovation and technology.(6)

“ Many organisations are now taking a more global view of talent and, as a result, are unearthing many potential opportunities for both their business and their employees ”

”

The Challenge And The Opportunity

To counteract these forces, many organisations are now taking a more global view of talent and, as a result, are unearthing many potential opportunities for both their business and their employees. Some of these opportunities include:

- Increasing the talent pool available to an organisation.
- Enabling the career aspirations of existing employees through a greater number of opportunities.
- Increasing an organisation's ability to deploy key skills to where they are needed most within the organisation.

However, realising these opportunities is not without its challenges which typically fall into one or more of the following:

- Finding a way to overcome a lack of infrastructure to analyse and evaluate the skills available within and outside of the organisation on a global basis, often leading to siloed domestic recruitment strategies.
- Working with existing HR functions/ capabilities that tend to be both domestically focused and/or structured around technical disciplines (e.g., talent acquisition, learning and development, workforce management etc.) and may not be able to solve talent supply chain problems on a global or cross-border basis.
- Overhauling existing processes that involve Global Mobility, the function which ordinarily supports the temporary or permanent cross-border movement of employees and external hires, who are often involved late in the selection process and treated as a separate function to wider HR/Talent.



“

To overcome these challenges,
a new global talent approach
is needed

”

To overcome these challenges, a new global talent approach is needed. One which has a border-free mindset and utilises cross-functional or multi-disciplinary teams to set talent programmes directly in response to business imperatives and help deliver the key skills required by the organisation to where they are needed most. Imagine an approach where talent acquisition professionals work as one global team, alongside global mobility, tax and legal professionals, and business leaders to review business requirements, determine talent needs, identify pools of talent (internal and external), and deliver a strategic programme to acquire and internationally deploy talent when and where it is needed, efficiently and compliantly.

From being reactive, with possible disconnects due to functional silos, organisations would be able to shift to a more proactive approach, better able to plan, and adopt practical capabilities to utilise global talent, once identified. This does, of course, require robust HR operations, but can better realise the benefits of proactive workforce planning, and support improvement in employee experience.

At the core of this concept is the need for organisations to have a clear understanding of the wide range of talent onboarding and deployment approaches. As well as domestic hiring, organisations can explore alternative means of talent deployment such as international assignments, local-to-local employee transfers, permanent remote working, virtual assignments, business travel, global employment organisations, global employment companies, and more. This exploration does not necessarily mean that every organisation will utilise all options at its disposal, but they will have a clear rationale for which approaches will work for them, together with the potential value proposition, e.g., use of virtual assignments will not only allow an organisation to deploy skills quickly, but also offer a global experience to employees who may have previously been unable to physically relocate. This should also not be a one-time exercise; strategies should be frequently revisited to ensure the approach taken remains fit for purpose.

A Future-Proofed Model

The business imperative of the race for talent, the enhanced ability of technology ecosystems, and a global mindset culture form the foundations to allow a new approach to be embedded. The New Global Workforce Model (Figure 1 below) seeks to take advantage of all these aspects, responding to the changing forces in the world of talent. With the overarching business strategy at the centre, a new internal cross-functional/disciplinary group known as ‘Global Workforce Advisory’ can work with the business to identify and source key skills that may be required. Solutions and/or programmes can then be created that allow for the self-service management of talent by individual business leaders (e.g., requests for project management or data expertise) which are constantly reviewed and iterated through the use of analytics and a continuing focus on return on investment.

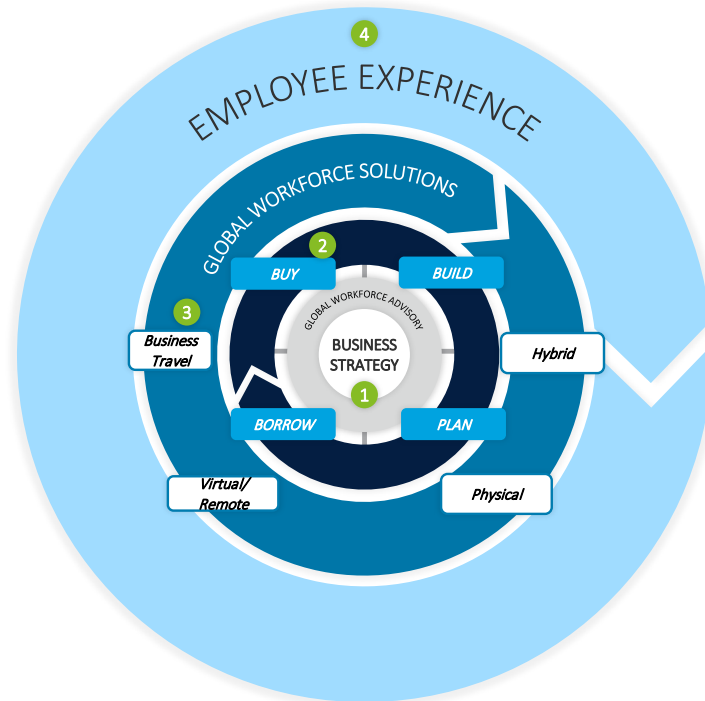
Figure 1

The New Global Workforce Model

Through a proactive consideration of the broader business strategy, the Global Workforce Model cuts across traditional functional silos to minimise handoffs and offer clear mobility types available on a self-service basis. Return on Investment (ROI) is transparent and constant iteration ensures repeated value is delivered to the wider organisation.

Core Elements of the Global Workforce Service Delivery Model

- 1 Model centres around true business partnering, with Business Strategy at its core.
- 2 Global Workforce Advisory exists to fulfil business priorities by attracting, developing, retaining and deploying a connected, agile and dynamic global workforce.
- 3 Deployment methods include business travel, virtual/remote, physical, or hybrid arrangements. These options are known as differing Global Workforce Solutions and are enabled by skills, delivery model, process, technology, analytics, and vendors
- 4 Employee Experience digitally connects the Global Workforce Solutions to the wider organisation, allowing for service initiation and targeted consultancy



We envisage such solutions and/or programmes to focus on resolving issues with one or more of the four key elements of the talent lifecycle (BUY - acquisition of new talent; BUILD - generating the skills and capabilities required; BORROW - deployment of talent; PLAN - succession and career planning) and to consider them from an international perspective.

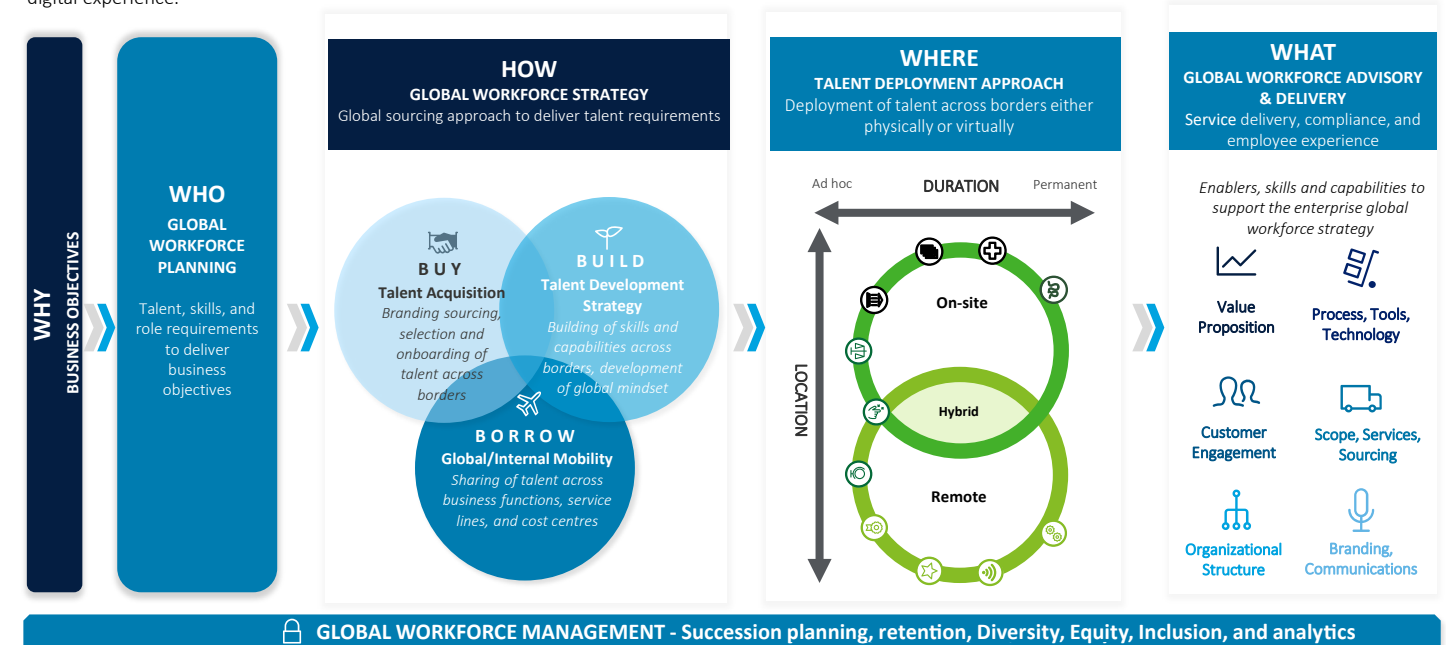
Example solutions could include hiring of talent on a permanent remote basis in a talent hotspot; virtual assignments to provide global opportunities, and learning experiences for individuals who are unable to physically relocate cross-border; use of global employment companies to quickly deploy high demand skills to where they are needed most.

Moving to a new talent approach and model requires deliberate thought and effort to ensure the change is embedded successfully and the gains sought are realised. As well as developing this new model through our work with clients, we have been able to develop a new set of building blocks (Figure 2, see below) to support organisations with this journey.

Figure 2

From Global Mobility to Managing a Global Workforce

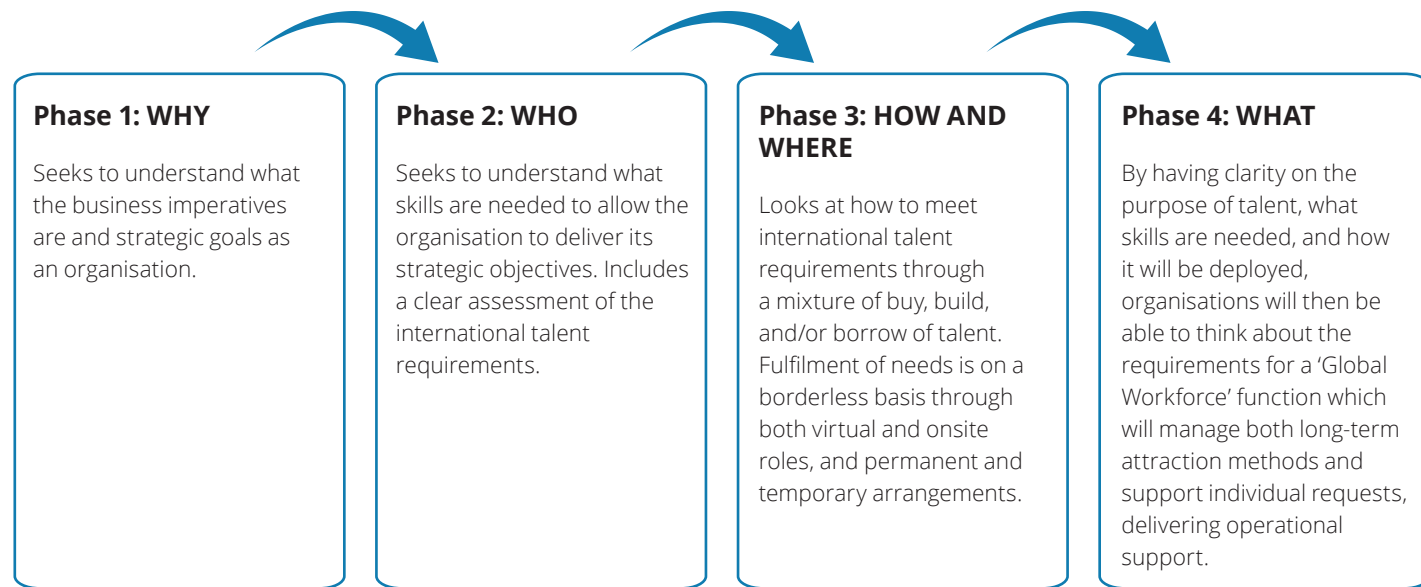
The future global workforce programme provides **holistic advisory and delivery which supports the entire HR lifecycle**. This approach supports all cross-border talent **planning, acquisition, development and deployment** (internal & global mobility). It addresses the future of how we work in a hybrid world and optimises the employee and digital experience.



All phases are underpinned by analytics and longer-term workforce planning driving retention efforts and ensuring return on talent investment.





Creating your Global Workforce Strategy

As detailed in the new building blocks (Figure 2), we anticipate organisations will follow four key steps or phases to create their new Global Workforce Strategy. As detailed below, this moves from initially exploring the 'Why' and understanding the broader business challenge, to the 'What' and detailing the exact requirements needed to deliver on any proposed strategy.



The Implementation - Turning Strategy Into Reality

Moving to a new model may not always be simple, but it is critical for organisations to consider how best to adapt to a global talent approach, particularly given the Future of Work is 'here and now'. The first steps on this journey could include, but will not be limited to:

-  **Having a change-mindset:** one of the most critical aspects of a successful implementation will be understanding and managing the change. The approach may require a differentiated mindset and culture - moving from domestic, potentially siloed functions to a multi-disciplinary global talent model.
-  **Engaging with your stakeholders:** the implementation will require early buy-in from the top as well as collaboration across business functions. Educate yourself and your stakeholders on the need for change, and the benefits that can be reaped by taking this leap of faith as early as possible.
-  **Understanding the talent supply chain challenges:** it is essential to understand your organisation's problem statement both in terms of size and scale. Knowing this will allow you to articulate the opportunities available and why a global talent approach may better enable wider business objectives.
-  **Considering the technology solutions available:** a fundamental aspect will include having a supporting infrastructure to allow business leaders to access and understand the global skills and talent available. There are many talent marketplace and global workforce management technology solutions available, and conducting a market scan of these early in your change journey is imperative.



Time For Action



Having to respond to the increasingly complex world of talent is not a question of ‘if’ but ‘when’. Organisations must put in place a proactive strategy, approach, and model to respond and overcome the challenges faced. The time is now. If any of the topics and issues discussed here resonate, please do get in touch - we would be delighted to have a formal or informal conversation.

Reference:

- ⁽¹⁾ Global jobs market recovery ‘has gone into reverse’, warns UN labour agency’, UN News – May 2022
- ⁽²⁾ Are employers heading for a talent shortage perfect storm?, Forbes – May 2022
- ⁽³⁾ 2022 Fortune/Deloitte CEO Survey (175 leading CEOs within 15 industries) – Winter 2022
- ⁽⁴⁾ Future of Jobs Report 2020, World Economic Forum – Oct 2020
- ⁽⁵⁾ Creating a consumer-grade experience for employees with digital HR’, Deloitte - 2017
- ⁽⁶⁾ 2022 Fortune/Deloitte CEO Survey (175 leading CEOs within 15 industries) – Winter 2022

Who to Contact

Authors



Rumi Das
 Partner, Global Workforce Consulting, Deloitte LLP
 +44 20 7007 0433
 rudas@deloitte.co.uk



Beth McConnell
 Director, Global Workforce Consulting, Deloitte LLP
 +44 20 7007 8643
 bethmcconnell@deloitte.co.uk



James Hobley
 Associate Director, Global Workforce Consulting, Deloitte LLP
 +44 118 322 2509
 jhobley@deloitte.co.uk

Deloitte Global Workforce Consulting

In today’s increasingly competitive world, businesses are having to find new ways to attract, acquire, develop, retain, and deploy key talent and skills. While traditional hiring practices and global mobility assignments are still in place new methodologies are emerging, and HR, Reward, and Global Mobility functions are at an inflection point where they need to consider how to respond to these exciting changes brought by the Future of Work. Deloitte’s Global Workforce Consulting practice partners with organisations to help optimise and transform the operational, strategic, and digital aspects of Global Workforce Management and pride ourselves on being able to tailor our support to client specific requirements.

Find out more here www.deloitte.co.uk/globalworkforce

EMEA



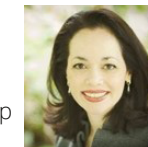
Rumi Das
 Partner
 +44 20 7007 0433
 rudas@deloitte.co.uk

APAC



May Myat Thu
 Partner
 +81 80 360 97082
 may.myat_thu@tohmatu.co.jp

US



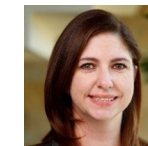
Michelle Fertig
 Tax Principal
 +1 212 492 4025
 mfertig@deloitte.com



Richard Goodwin
 Partner
 +41 58 279 8703
 rgoodwin@deloitte.ch



Gillian Waite
 Partner
 +85 22 852 1966
 gillianwaite@deloitte.co.uk



Laura Sanford
 Tax Principal
 +1 214 840 7022
 lsanford@deloitte.com

This publication has been written in general terms and we recommend that you obtain professional advice before acting or refraining from action on any of the contents of this publication. Deloitte LLP accepts no liability for any loss occasioned to any person acting or refraining from action as a result of any material in this publication.

Deloitte LLP is a limited liability partnership registered in England and Wales with registered number OC303675 and its registered office at 1 New Street Square, London EC4A 3HQ, United Kingdom.

Deloitte LLP is the United Kingdom affiliate of Deloitte NSE LLP, a member firm of Deloitte Touche Tohmatsu Limited, a UK private company limited by guarantee (“DTTL”). DTTL and each of its member firms are legally separate and independent entities. DTTL and Deloitte NSE LLP do not provide services to clients. Please click here to learn more about our global network of member firms.

© 2022 Deloitte LLP. All rights reserved.
 Designed by CoRe Creative Services. RITM1197997