

Toward the *social* enterprise

Key findings from the Deloitte 2018 *Global Human Capital Trends* survey

Respecting the power of the individual

Organizations face some challenges as they revamp their approach to workforce management, rewards systems, and career models.



The symphonic C-suite

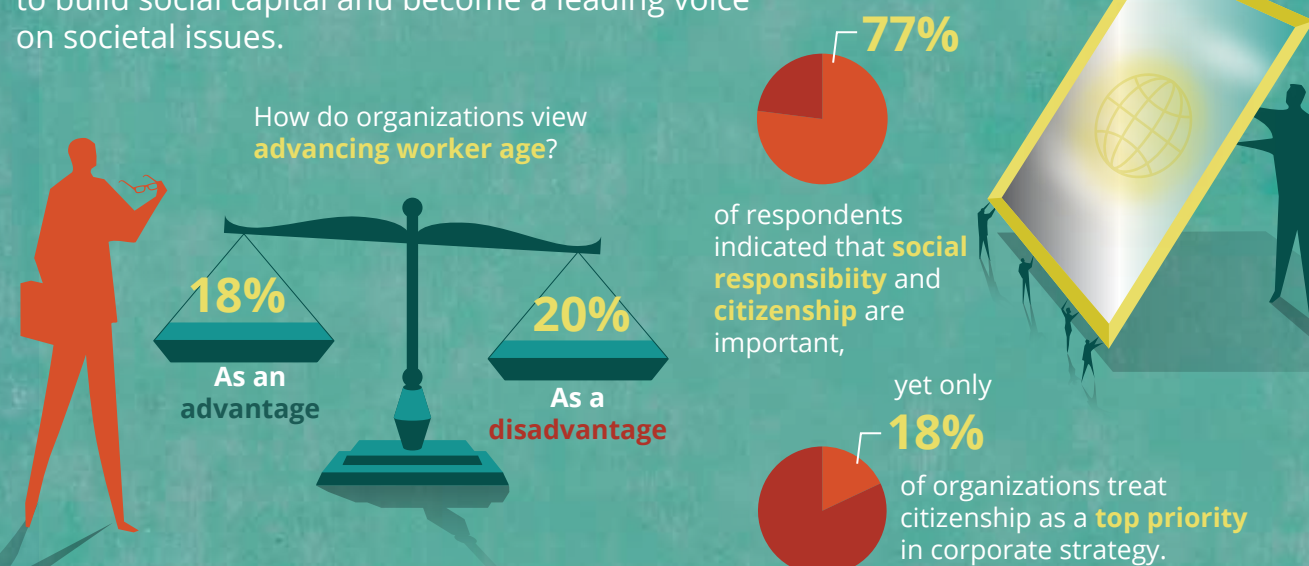
Respondents who indicate their C-suite executives **regularly collaborate on long-term interdependent work**

are a third more likely (**34%**) to expect 10 percent growth or more in the next year than respondents whose CxOs operate independently.



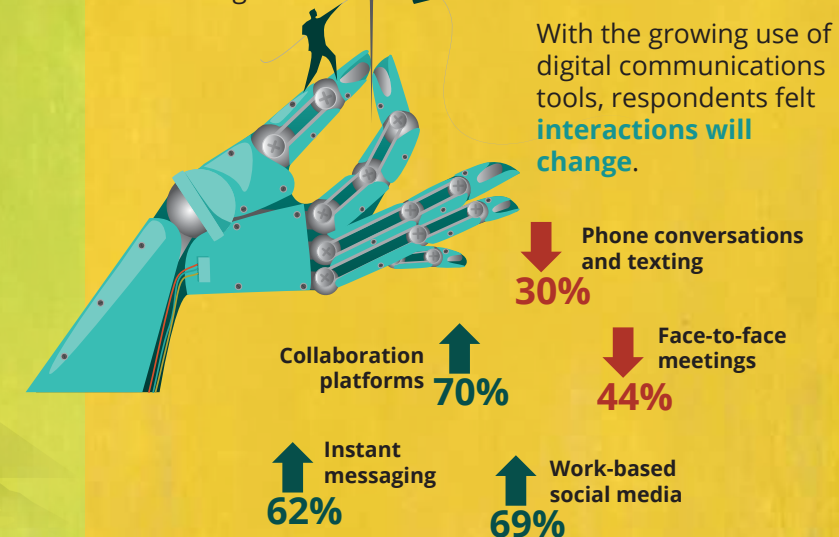
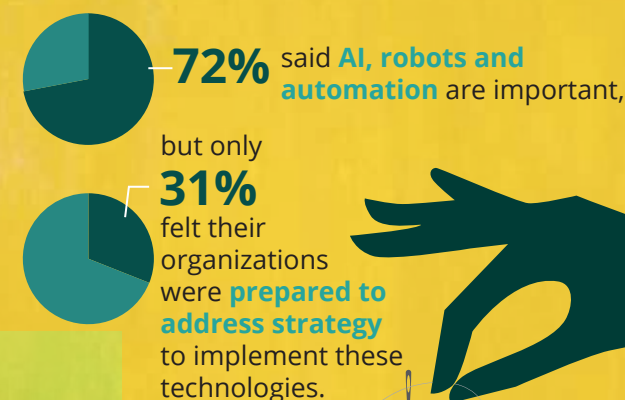
Filling society's leadership vacuum

A focus on citizenship can yield rich opportunities to build social capital and become a leading voice on societal issues.



Leveraging technology for sustainable growth

New technologies can help lift productivity and performance, but organizations must also pay attention to their impacts on the workforce as a whole.



Read the full report on the HC Trends app

Copyright © 2018 Deloitte Development LLC. All rights reserved.

Member of Deloitte Touche Tohmatsu Limited

