

**Deloitte.**



**Change the world,  
not who you are**

**What impact will you make?**  
[deloitte.com/jobsearch](https://deloitte.com/jobsearch)

# Content

Change the world, not who you are	4
Why join Deloitte?	5
Delivering client service that matters	8
Apply now	9

Our talent experience







# Change the world, not who you are

## What impact will you make?

People and culture make Deloitte the premier career destination.

At Deloitte, we are committed to creating a talent experience that allows our people to thrive and grow.

The talent experience we provide is unique and differentiating. In return, we expect our candidates to share our passion for living our purpose and making an impact that matters with our clients, our colleagues and our communities.

Our vision is to make a positive impact on the reputation and success of our clients, the economy and the wider society. It's a vision that has spanned our 160-year global presence.

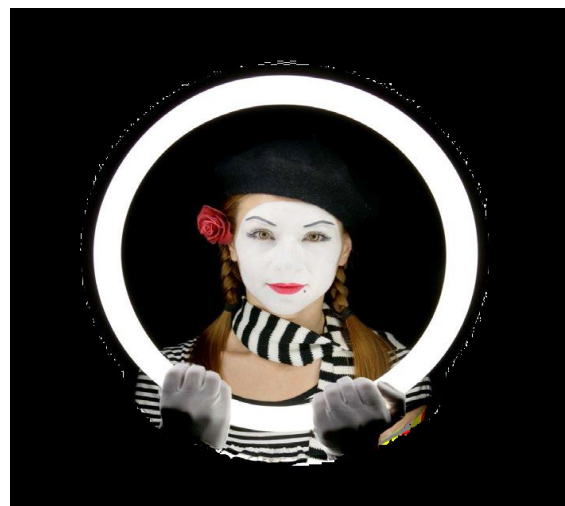
- Deloitte leads with purpose, values, and innovation, solving complex issues for our clients and communities.
- Deloitte invests in its leaders, helping you grow beyond your current role to maximize your contribution and impact.
- Deloitte creates a supportive and connected environment.
- Deloitte sees the value of its practitioners and their ability to create value inside the organization and out.

## Where doesn't matter

A workplace is wherever you want it to be. And wherever that is, Deloitte is right there with you. On the ground with today's challenges. Online with tomorrow's opportunities. Finding the heart of what matters. So let's talk about where you are right now. And where you are going to be.

Find the way at:

[HeartOfWhatMatters.Deloitte](https://HeartOfWhatMatters.Deloitte)



Searching for your true voice?

# Why join Deloitte?

## Deloitte provides...

- A **connected network** where practitioners feel supported and cared about and that encourages collaboration across borders, functions and levels.
- A broad range of services to our clients which presents job variety potential for our practitioners. We believe we have a **unique diversity of business** and breadth of learning and professional opportunities.
- The ability to work with **world-class leaders** internally and with our clients.
- The ability and opportunity to **lead at all levels**.
- An environment that **encourages authenticity** and believes bringing your true self to work enables success.
- An opportunity to **innovate**. Practitioners are encouraged to think "outside the box" to deliver solutions.
- A network of Member Firms and businesses that embraces the **diversity of thought and experience** that our practitioners bring.
- A **culture focused on strengths**.
- Each person is unique and valued for that, among the best and brightest in the business, and takes pride in his or her achievements and the success of others. **The culture is about inclusion, collaboration, high performance, and opportunity.**



Every story has a beginning...

## Deloitte offers...

Deloitte offers a dynamic range of audit, consulting, financial advisory, risk management, tax and related services to public and private clients spanning multiple industries.

In Greece Deloitte focuses on all major industries including financial services, shipping and ports, energy and resources, consumer business, life sciences and health care, manufacturing, technology, media and telecommunications, real estate and public sector services.

Member firm client service teams help create powerful business solutions for organizations operating all over the world. This integrated, multi-disciplinary approach combines insight and innovation with market knowledge and industry expertise to support clients in achieving their business goals.

In addition, there are rewarding opportunities to work in a number of internal services, including: human resources, information technology, marketing and communications, financial support services, and legal.

So where do you fit, and where can your career take you? Defining your career path is as simple as knowing that as your goals change, you have the opportunity to shift your career across business disciplines and borders and you can benefit from our international mobility programs within the global Deloitte network. Whatever your aspirations, we will help you to find a path that will meet your changing needs and support you in enjoying a rewarding career with one of the leading professional services networks in the world.

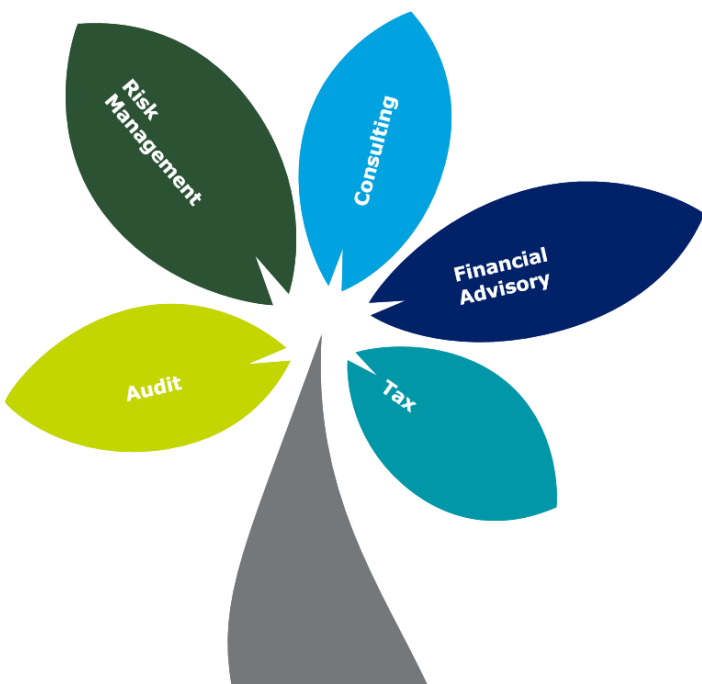








# Delivering client service that matters



## **Audit**

At Deloitte, we provide audit services advising our clients on their controls and accounting systems, and we help them solve complex problems and take preventative action. Specialist skills and industry expertise are required.

As an audit professional, you'll design and execute audit procedures based on your understanding of the client's business, the risks it faces, and its internal control processes. You'll gain exposure to a variety of industries and business models to increase your understanding of how organizations operate.

## **Risk Management**

Risk management covers many areas including security and privacy, reputation and control. Our professionals help clients across many industries flag, analyse, evaluate and manage strategic and operational risks while discovering opportunities to create value. If you want to make an impact by helping clients to prevent and manage risk-related issues while creating significant value to their business this may be your chance.

## **Consulting**

As the world's largest management consulting business, Deloitte is distinct in its ability to help clients solve their most complex problems, from strategy to implementation. We are differentiated by our capability to execute the advice we provide to help clients in the markets where they operate today and where they want to be in the future. Delivering this kind of value requires the skills to integrate a broad range of talent and skills – across human capital, strategy & operations, and technology – aligned to the unique needs of our clients' industry sectors, businesses, and organizations.

## **Financial advisory**

Deloitte Greece's Financial Advisory team provides advisory services around M&A transactions, restructurings, raising capital, and forensic investigations. It also offers multi-situational capabilities, business modeling, Public Private Partnerships and infrastructure advisory services & valuations. Our emphasis is on delivering innovative effective solutions tailored towards client's specific requirements. Corporate Finance specialists support clients ranging from corporate and financial investors to governments, private companies, and individuals, in the provision of independent financial advice.

## **Tax**

Deloitte offers clients a broad range of fully integrated tax services. Our approach combines insight and innovation from multiple disciplines with business and industry knowledge to help clients excel globally. Tax services include Business Tax, International Tax, Transfer Pricing, Tax Management Consulting, Mergers & Acquisitions (Tax), Research and Development and Government Incentives, Deloitte Private, Indirect Tax, Global Employer Services, and Business Process Solutions.

# Apply now...

## What to start with?

Our application and selection process is a joint effort between you and us – we'll give you all the information we can possibly give to enable you to make a successful choice and we expect you to do the same.

Your CV is your opportunity to highlight your skills, experience and achievements that make you a good match to the opportunity you have applied for.

## How to apply?

In order to apply to an opportunity with Deloitte Greece follow 3 easy steps:

1. Browse our open roles to select the opportunity you are interested in.
2. Create an account on our recruitment system or log in if you have applied to us previously.
3. Answer a few brief questions and upload your CV.

You may visit our career site at:

[www.deloitte.com/jobsearch](http://www.deloitte.com/jobsearch)









Deloitte Certified Public Accountants S.A., Deloitte Business Solutions S.A. and Deloitte Accounting Compliance & Reporting Services S.A. are the Greek member firms of Deloitte Touche Tohmatsu Limited, a UK private company limited by guarantee ("DTTL"), its network of member firms, and their related entities. DTTL and each of its member firms are legally separate and independent entities. DTTL (also referred to as "Deloitte Global") does not provide services to clients. Please see [www.deloitte.com/about](http://www.deloitte.com/about) to learn more about our global network of member firms.

Deloitte provides audit, consulting, financial advisory, risk management, tax and related services to public and private clients spanning multiple industries. Deloitte serves four out of five Fortune Global 500® companies through a globally connected network of member firms in more than 150 countries bringing world-class capabilities, insights, and high-quality service to address clients' most complex business challenges. To learn more about how Deloitte's approximately 225,000 professionals make an impact that matters, please connect with us on Facebook, LinkedIn, or Twitter.

In Greece, "Deloitte Certified Public Accountants S.A." provides audit services, "Deloitte Business Solutions S.A." financial advisory, tax and consulting services and "Deloitte Accounting Compliance & Reporting Services S.A." accounting outsourcing services. With a staff of more than 600 and offices in Athens and Thessaloniki, Deloitte in Greece focuses on all major industries including financial services, shipping and ports, energy and resources, consumer business, life sciences and health care, manufacturing, technology, media and telecommunications, real estate and public sector services. Deloitte clients include most of the leading private and public, commercial, financial and industrial companies. For more information, please visit our website at [www.deloitte.gr](http://www.deloitte.gr)

This communication contains general information only, and none of Deloitte Touche Tohmatsu Limited, its member firms, or their related entities (collectively, the "Deloitte Network") is, by means of this communication, rendering professional advice or services. Before making any decision or taking any action that may affect your finances or your business, you should consult a qualified professional adviser. No entity in the Deloitte Network shall be responsible for any loss whatsoever sustained by any person who relies on this communication.

3a Fragoklissias & Granikou str., 151 25 Maroussi, Attika – Greece,  
Tel: +30 210 6781 100

© 2016 All rights reserved.