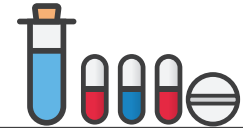


Embracing exponential changes in technology

AI, cognitive technologies, automation, and computing power are creating a transformation opportunity

=

The industrialization of life sciences!



Impact

- ⊖ Increasing data capabilities
- ⊖ Adopting enterprise-wide, real-world-evidence (RWE) strategies
- ⊖ Advanced digital & cognitive computing
- ⊖ Partnering with tech
- ⊖ 3D printing
- ⊖ Blockchain

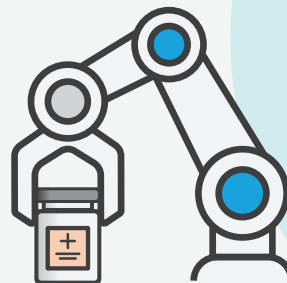


Improve patient outcomes



Exponential technologies impact:

- ⊖ Cloud can improve analytical systems' overall performance to manage Real-World Data
- ⊖ Improving the speed and outcomes of clinical development
- ⊖ Supply chain via connected 'Digital Supply Networks'
- ⊖ Assist in dealing with cyber threats



Life sciences companies need speed, scale, complexity and security solutions = cloud computing

New technologies are creating new roles in life sciences (i.e. Chief Data Officer)

Deloitte.

www.deloitte.com/lifesciencesoutlook

About Deloitte

Deloitte refers to one or more of Deloitte Touche Tohmatsu Limited, a UK private company limited by guarantee ("DTTL"), its network of member firms, and their related entities. DTTL and each of its member firms are legally separate and independent entities. DTTL (also referred to as "Deloitte Global") does not provide services to clients. Please see www.deloitte.com/about for a more detailed description of DTTL and its member firms. Deloitte provides audit, consulting, financial advisory, risk management, tax and related services to public and private clients spanning multiple industries. With a globally connected network of member firms in more than 150 countries and territories, Deloitte brings world-class capabilities and high-quality service to clients, delivering the insights they need to address their most complex business challenges. Deloitte's more than 200,000 professionals are committed to becoming the standard of excellence.

Disclaimer

This publication contains general information only, and none of Deloitte Touche Tohmatsu Limited, its member firms, or their related entities (collectively the "Deloitte Network") is, by means of this publication, rendering professional advice or services. Before making any decision or taking any action that may affect your finances or your business, you should consult a qualified professional adviser. No entity in the Deloitte Network shall be responsible for any loss whatsoever sustained by any person who relies on this publication.

For more information about the DTTL LSHC industry group, email dtllshc@deloitte.com or access www.deloitte.com/healthcare.

©2018. For more information, contact Deloitte Touche Tohmatsu Limited