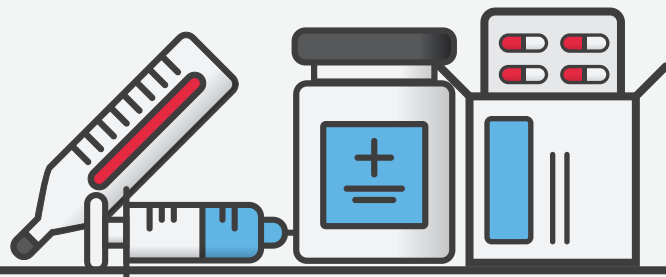


# Building a smart, cross-functional regulatory approach

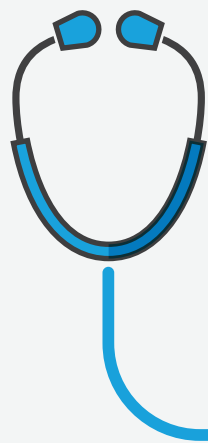
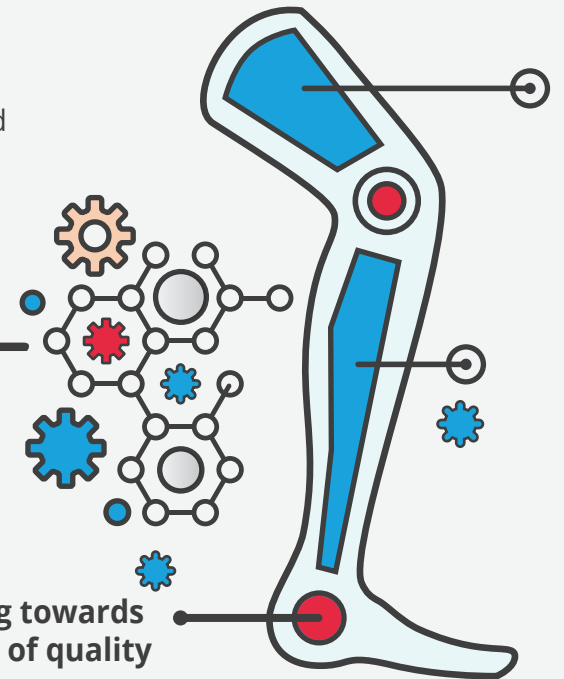
## Goals:

- ⊖ Continually evaluate the individual and collective impacts of new regulations and take a proactive approach to managing regulatory change
- ⊖ Look at speeding up the processes around regulatory, unifying the data standards in different departments, and accessibility

While challenging, obtaining cross-functional regulatory governance will be key



Regulatory moving towards self-regulation and a culture of quality



A trend towards a holistic approach can be seen in the synergies between regulations- Example:

IDMP

Other regulatory mandates & standards

Regulatory will need to better coordinate the whole ecosystem

- ⊖ Connected devices
- ⊖ Products
- ⊖ Services



# Deloitte.

[www.deloitte.com/lifesciencesoutlook](http://www.deloitte.com/lifesciencesoutlook)

## About Deloitte

Deloitte refers to one or more of Deloitte Touche Tohmatsu Limited, a UK private company limited by guarantee ("DTTL"), its network of member firms, and their related entities. DTTL and each of its member firms are legally separate and independent entities. DTTL (also referred to as "Deloitte Global") does not provide services to clients. Please see [www.deloitte.com/about](http://www.deloitte.com/about) for a more detailed description of DTTL and its member firms. Deloitte provides audit, consulting, financial advisory, risk management, tax and related services to public and private clients spanning multiple industries. With a globally connected network of member firms in more than 150 countries and territories, Deloitte brings world-class capabilities and high-quality service to clients, delivering the insights they need to address their most complex business challenges. Deloitte's more than 200,000 professionals are committed to becoming the standard of excellence.

## Disclaimer

This publication contains general information only, and none of Deloitte Touche Tohmatsu Limited, its member firms, or their related entities (collectively the "Deloitte Network") is, by means of this publication, rendering professional advice or services. Before making any decision or taking any action that may affect your finances or your business, you should consult a qualified professional adviser. No entity in the Deloitte Network shall be responsible for any loss whatsoever sustained by any person who relies on this publication.

For more information about the DTTL LSHC industry group, email [dtllshc@deloitte.com](mailto:dtllshc@deloitte.com) or access [www.deloitte.com/healthcare](http://www.deloitte.com/healthcare).

©2018. For more information, contact Deloitte Touche Tohmatsu Limited