

Corporate Finance

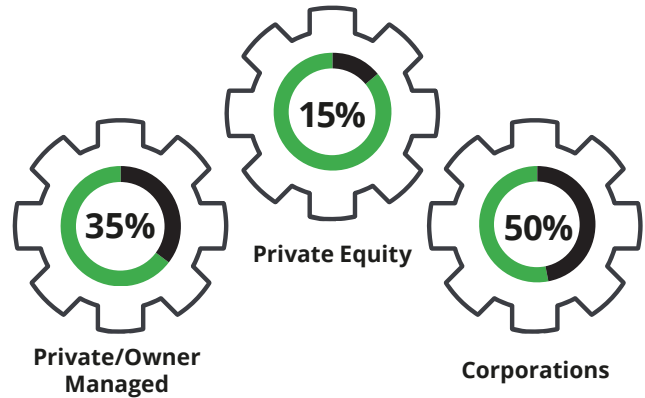
The client service and middle market focus of a **boutique investment bank**, backed by the global reach and cross-functional capabilities of the world's largest professional services network.

A busy 12 months of activity...



Lead adviser on **>525** completed deals....
...with a combined enterprise value of **~\$56.4bn**

Advised clients ranging from entrepreneurs and owner-managed businesses to private equity and multinational corporations...



... A track record that speaks for itself

Advised clients on the sale of **>270** businesses...

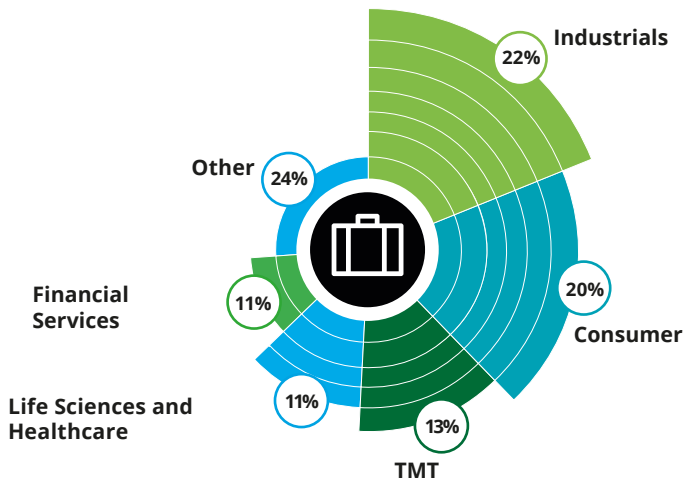


and on **>200** acquisitions...

with **34%** of transactions having a cross-border element...



Deal completions by industry



International reach

Delivering clients an integrated global network of deal makers, industry specialists, and subject matter specialists...



...encompassing **~205** partners and **~1,375** professionals located in **120** office locations across the Deloitte network.

Corporate Finance Mission Statement

Providing independent financial, M&A and debt/equity advice—whether you are seeking to expand organically or via a strategic acquisition, realize value through the sale of a business, a subsidiary or a shareholding, raise new finance, review debt facilities or improve balance sheet funding efficiencies.

Connect with your local Corporate Finance team

Visit www.deloitte.com/corporatefinance to locate your local Corporate Finance team. Alternatively, please contact the relevant Corporate Finance leader below.

Global Leader—Corporate Finance

Phil Colaço

CEO - Deloitte Corporate Finance LLC
Charlotte
philcolaco@deloitte.com

Americas

Will Frame

Managing Director
Deloitte Corporate Finance LLC
Chicago
wframe@deloitte.com

Europe, Middle East & Africa

Béla Seres

Partner - Deloitte Central Europe
Budapest
Bseres@deloitteCE.com

Asia Pacific

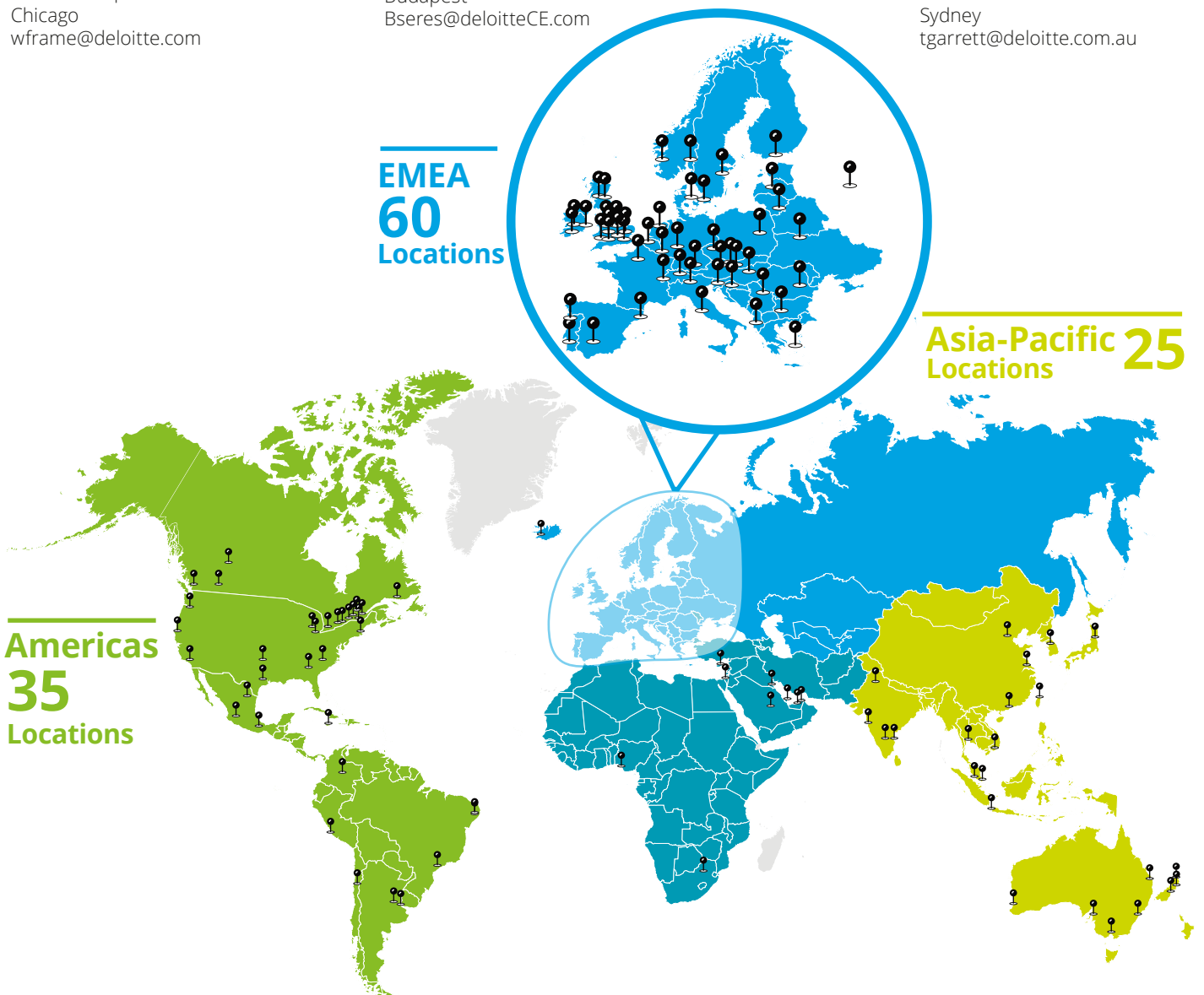
Tony Garrett

Partner
Deloitte Australia
Sydney
tgarrett@deloitte.com.au

EMEA
60
Locations

Asia-Pacific
25
Locations

Americas
35
Locations



Deloitte refers to one or more of Deloitte Touche Tohmatsu Limited ("DTTL"), its global network of member firms and their related entities. DTTL (also referred to as "Deloitte Global") and each of its member firms are legally separate and independent entities. DTTL does not provide services to clients. Please see www.deloitte.com/about to learn more.

Deloitte is a leading global provider of audit and assurance, consulting, financial advisory, risk advisory, tax and related services. Our network of member firms in more than 150 countries and territories serves four out of five Fortune Global 500® companies. Learn how Deloitte's approximately 264,000 people make an impact that matters at www.deloitte.com.