



# Regulation and Compliance

## Mastering Complexity with RegMonitoring by Deloitte

# Introduction

# Speakers

---



**Thomas Northoff**

Deloitte Legal | Partner  
Corporate/M&A | LMC | LMS

Tel.: +49 89 290368566

E-Mail: [tnorthoff@deloitte.de](mailto:tnorthoff@deloitte.de)



**Dr. Marcus Pauli**

Deloitte | Partner  
Financial Advisory

Tel.: +49 89 290368950

E-Mail: [mpauli@deloitte.de](mailto:mpauli@deloitte.de)



**Klaus Gresbrand**

Deloitte Legal | Partner  
Corporate/M&A | Legal Technology

Tel.: +49 211 87722501

E-Mail: [kgresbrand@deloitte.de](mailto:kgresbrand@deloitte.de)



**Timur Tretner**

Deloitte | Manager  
Consulting

Tel.: +49 221 97324346

E-Mail: [ttretner@deloitte.de](mailto:ttretner@deloitte.de)

# RegMonitoring by Deloitte

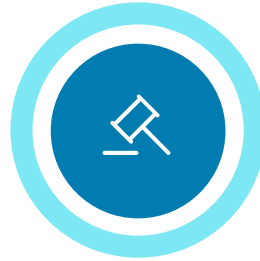
# RegMonitoring by Deloitte

Three major areas of RegMonitoring by Deloitte



## 01 Regulation

Get **upcoming and current regulations** and keep track of your internal knowledge about the specific legal regulations.



## 02 Regulatory Change

Stay on top of the **changes** with up-to-date alerts provided by Deloitte with verified **legal summary** and indicative relevance.

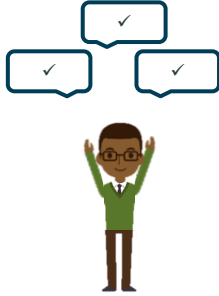
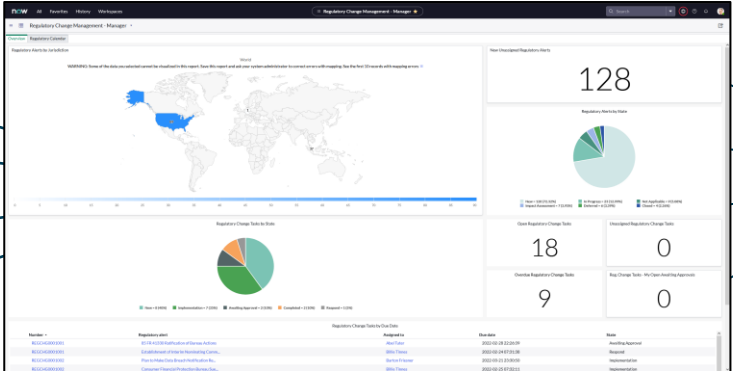
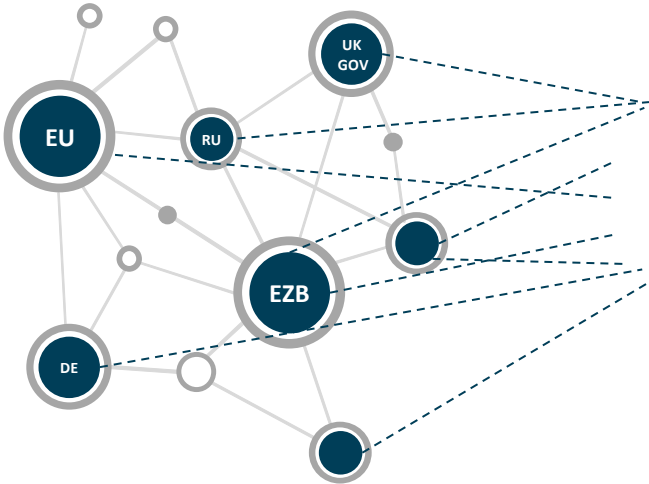


## 03 Action Tasks

Integrate process from alert, **evaluation** of regulatory change, planning impact **implementation**, and keeping eye on legal risks and **compliance** within organization.

# RegMonitoring by Deloitte

## High Level Approach



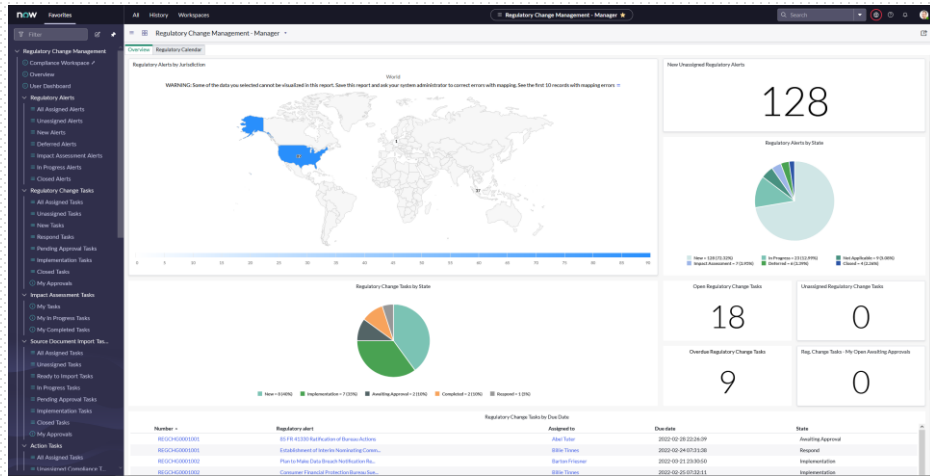
- Single Source of Truth for regulatory changes and actions necessary to conduct
- News and alerts are screened and structured by their Legal Themes, Sectors, and Jurisdictions
- Initial Relevance and Impact are assessed and verified
- Compliance tasks defined and tracked across whole organization

Reg. Changes	Alerts & News
New Laws	Readings
Discussion Papers	...

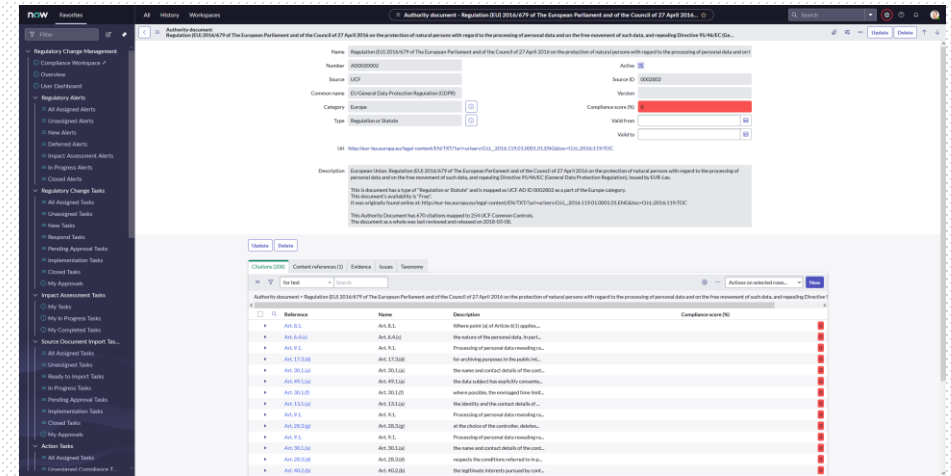
# RegMonitoring by Deloitte

## E2E-Solution on ServiceNow

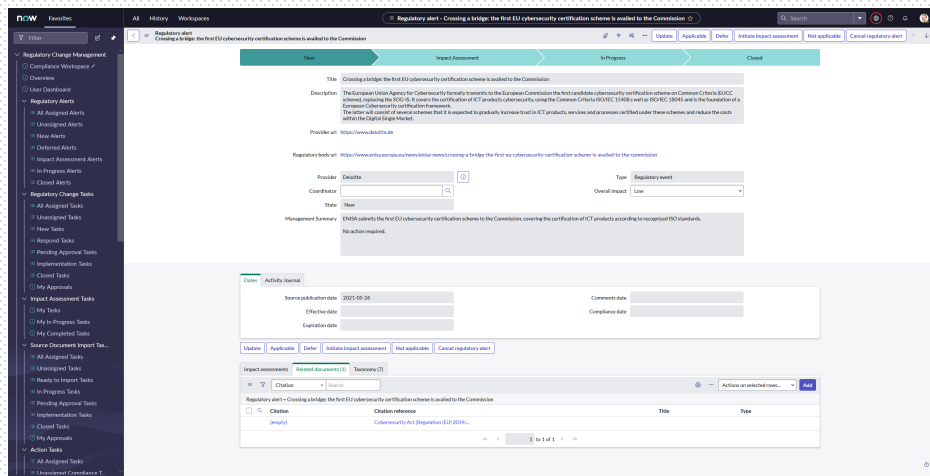
Central dashboard



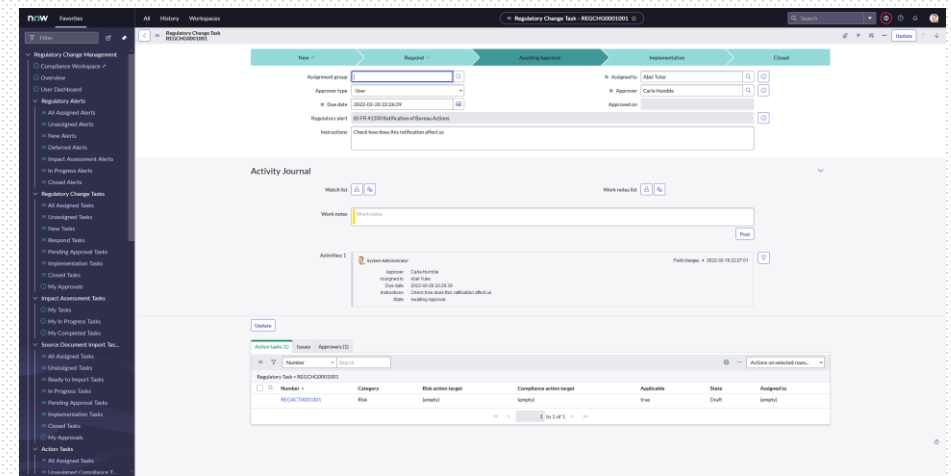
Details for each regulatory framework



Details for each alert



Workflows with action tasks for E2E tracking



# RegMonitoring by Deloitte (Alert Sample View)

## E2E-Solution on ServiceNow

### Details for each alert

**Regulatory alert - Crossing a bridge: the first EU cybersecurity certification scheme is availed to the Commission**

**Progress:** New → Impact Assessment → In Progress → Closed

**Title:** Crossing a bridge: the first EU cybersecurity certification scheme is availed to the Commission

**Description:** The European Union Agency for Cybersecurity formally transmits to the European Commission the first candidate cybersecurity certification scheme on Common Criteria (EUCC scheme), replacing the SOG-IS. It covers the certification of ICT products cybersecurity, using the Common Criteria ISO/IEC 15408 s well as ISO/IEC 18045 and is the foundation of a European Cybersecurity certification framework. The latter will consist of several schemes that it is expected to gradually increase trust in ICT products, services and processes certified under these schemes and reduce the costs within the Digital Single Market.

**Provider url:** <https://www.deloitte.de>

**Regulatory body url:** <https://www.enisa.europa.eu/news/enisa-news/crossing-a-bridge-the-first-eu-cybersecurity-certification-scheme-is-availed-to-the-commission>

**Provider:** Deloitte

**Type:** Regulatory event

**Coordinator:** [Search]

**State:** New

**Management Summary:** ENISA submits the first EU cybersecurity certification scheme to the Commission, covering the certification of ICT products according to recognized ISO standards. No action required.

**Dates:**

- Source publication date: 2021-05-26
- Effective date: [Search]
- Expiration date: [Search]
- Comments date: [Search]
- Compliance date: [Search]

**Related documents (1):**

Citation	Citation reference	Title	Type
(empty)	Cybersecurity Act (Regulation EU 2019/...)		



# Q & A



**Thank you**  
for your attention!

# Your Contact



**Thomas Northoff**

Deloitte Legal | Partner  
Corporate/M&A | LMC | LMS

Tel.: +49 89 290368566

E-Mail: [tnorthoff@deloitte.de](mailto:tnorthoff@deloitte.de)



**Dr. Marcus Pauli**

Deloitte | Partner  
Financial Advisory

Tel.: +49 89 290368950

E-Mail: [mpauli@deloitte.de](mailto:mpauli@deloitte.de)



**Klaus Gresbrand**

Deloitte Legal | Partner  
Corporate/M&A | Legal Technology

Tel.: +49 211 87722501

E-Mail: [kgresbrand@deloitte.de](mailto:kgresbrand@deloitte.de)



**Timur Tretner**

Deloitte | Manager  
Consulting

Tel.: +49 221 97324346

E-Mail: [ttretner@deloitte.de](mailto:ttretner@deloitte.de)

**Deloitte Legal**

# Experience the future of law, today

## An introduction to Deloitte Legal

### Deloitte Legal is

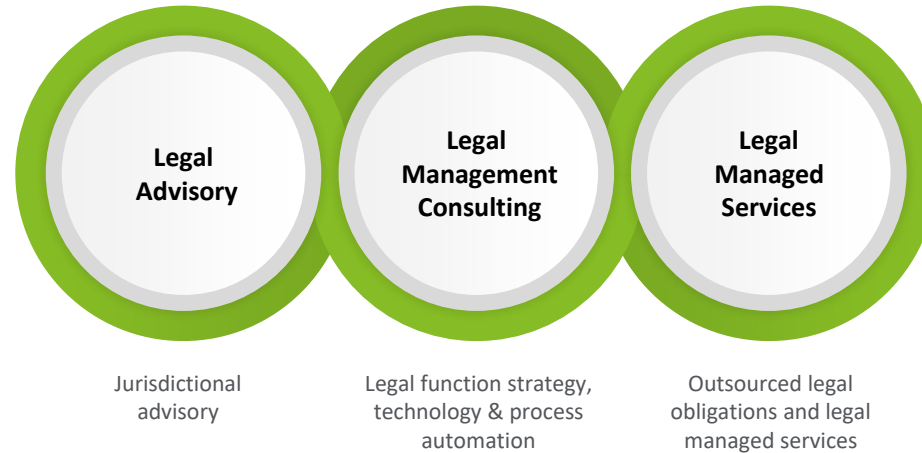
more than **2,500** legal professionals  
operating in **75+** jurisdictions



**collaborating seamlessly**  
across borders and with other Deloitte  
business lines

### Deloitte Legal practice areas

We are organized into three intersecting market offerings, enabling us to serve our clients when, how, and where we can help them achieve their visions.



### We apply perspective to deliver value

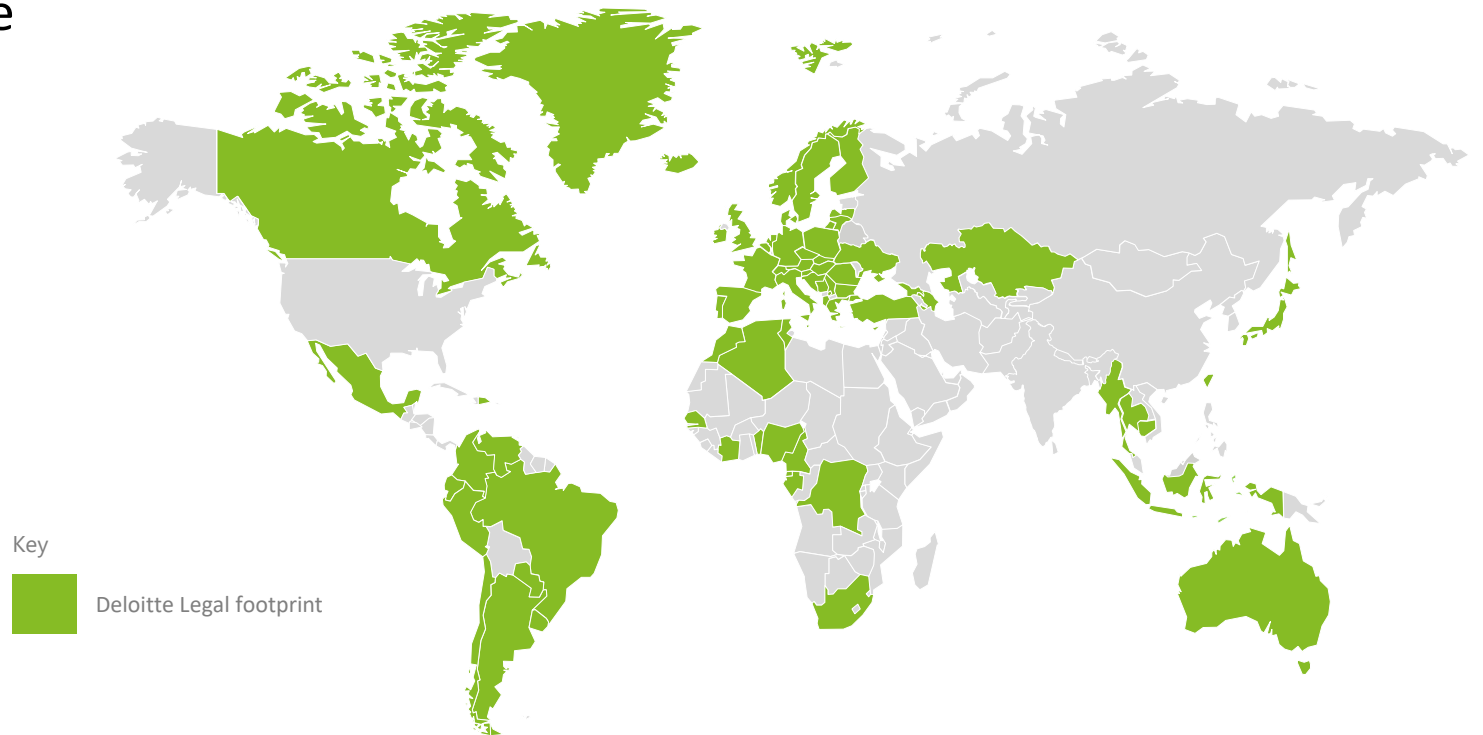
Deloitte's cross-disciplinary approach enables us to provide globally integrated services that are:

-  **Consistent**  
with your enterprise-wide vision
-  **Tailored**  
to your business units and geographies
-  **Technology-enabled**  
for improved collaboration and transparency
-  **Sensitized**  
to your regulatory requirements

# Cross-border coordination and a single point of contact

It can be enormously challenging to manage numerous legal services providers around the world and issues can slip into the cracks.

As one of the global leaders in legal services, Deloitte Legal works with you to understand your needs and your vision, and to coordinate delivery around the world to help you achieve your business goals.



## Deloitte Legal practices

- |               |                        |                          |                 |                  |                    |
|---------------|------------------------|--------------------------|-----------------|------------------|--------------------|
| 1. Albania    | 15. Chile              | 29. Gabon                | 43. Kazakhstan  | 57. Peru         | 71. Thailand       |
| 2. Algeria    | 16. Colombia           | 30. Georgia              | 44. Kosovo      | 58. Poland       | 72. Tunisia        |
| 3. Argentina  | 17. Costa Rica         | 31. Germany              | 45. Latvia      | 59. Portugal     | 73. Turkey         |
| 4. Australia  | 18. Croatia            | 32. Greece               | 46. Lithuania   | 60. Romania      | 74. Ukraine        |
| 5. Austria    | 19. Cyprus             | 33. Guatemala            | 47. Malta       | 61. Senegal      | 75. Uruguay        |
| 6. Azerbaijan | 20. Czech Rep.         | 34. Honduras             | 48. Mexico      | 62. Serbia       | 76. United Kingdom |
| 7. Belgium    | 21. Dem Rep of Congo   | 35. Hong Kong SAR, China | 49. Montenegro  | 63. Singapore    | 77. Venezuela      |
| 8. Benin      | 22. Denmark            | 36. Hungary              | 50. Morocco     | 64. Slovakia     |                    |
| 9. Bosnia     | 23. Dominican Republic | 37. Iceland              | 51. Myanmar     | 65. Slovenia     |                    |
| 10. Brazil    | 24. Ecuador            | 38. Indonesia            | 52. Netherlands | 66. South Africa |                    |
| 11. Bulgaria  | 25. El Salvador        | 39. Ireland              | 53. Nicaragua   | 67. Spain        |                    |
| 12. Cambodia  | 26. Equatorial Guinea  | 40. Italy                | 54. Nigeria     | 68. Sweden       |                    |
| 13. Cameroon  | 27. Finland            | 41. Ivory Coast          | 55. Norway      | 69. Switzerland  |                    |
| 14. Canada    | 28. France             | 42. Japan                | 56. Paraguay    | 70. Taiwan       |                    |



Deloitte Legal means the legal practices of Deloitte Touche Tohmatsu Limited member firms, their affiliates or partner firms that provide legal services.

Deloitte refers to one or more of Deloitte Touche Tohmatsu Limited (“DTTL”), its global network of member firms, and their related entities (collectively, the “Deloitte organization”). DTTL (also referred to as “Deloitte Global”) and each of its member firms and related entities are legally separate and independent entities, which cannot obligate or bind each other in respect of third parties. DTTL and each DTTL member firm and related entity is liable only for its own acts and omissions, and not those of each other. DTTL does not provide services to clients. Please see [www.deloitte.com/de/UeberUns](http://www.deloitte.com/de/UeberUns) to learn more.

Deloitte is a leading global provider of audit and assurance, consulting, financial advisory, risk advisory, tax and related services; legal advisory services in Germany are provided by Deloitte Legal. Our global network of member firms and related entities in more than 150 countries and territories (collectively, the “Deloitte organization”) serves four out of five Fortune Global 500® companies. Learn how Deloitte’s approximately 345,000 people make an impact that matters at [www.deloitte.com/de](http://www.deloitte.com/de).

This communication contains general information only, and none of Deloitte Legal Rechtsanwaltsgesellschaft mbH or Deloitte Touche Tohmatsu Limited (“DTTL”), its global network of member firms or their related entities (collectively, the “Deloitte organization”) is, by means of this communication, rendering professional advice or services. Before making any decision or taking any action that may affect your finances or your business, you should consult a qualified professional adviser.

No representations, warranties or undertakings (express or implied) are given as to the accuracy or completeness of the information in this communication, and none of DTTL, its member firms, related entities, employees or agents shall be liable or responsible for any loss or damage whatsoever arising directly or indirectly in connection with any person relying on this communication. DTTL and each of its member firms, and their related entities, are legally separate and independent entities.