

Deloitte refers to one or more of Deloitte Touche Tohmatsu Limited, a UK private company limited by guarantee ("DTTL"), its network of member firms, and their related entities. DTTL and each of its member firms are legally separate and independent entities. DTTL (also referred to as "Deloitte Global") does not provide services to clients. Please see www.deloitte.com/de/ueberUns for a more detailed description of DTTL and its member firms.

Deloitte provides audit, risk advisory, tax, financial advisory and consulting services to public and private clients spanning multiple industries; legal advisory services in Germany are provided by Deloitte Legal. With a globally connected network of member firms in more than 150 countries, Deloitte brings world-class capabilities and high-quality service to clients, delivering the insights they need to address their most complex business challenges. Deloitte's more than 244,000 professionals are committed to making an impact that matters.

This communication contains general information only not suitable for addressing the particular circumstances of any individual case and is not intended to be used as a basis for commercial decisions or decisions of any other kind. None of Deloitte Consulting GmbH or Deloitte Touche Tohmatsu Limited, its member firms, or their related entities (collectively, the "Deloitte network") is, by means of this communication, rendering professional advice or services. No entity in the Deloitte network shall be responsible for any loss whatsoever sustained by any person who relies on this communication.

Impact of Major Interruptions

- 1 Compromising critical infrastructures and enablers of a company's value chain and business functions can create serious financial damage, regulatory issues and reputation losses
- 2 Failure to perform regulatory reporting can lead to serious fines, e.g. pharmaceuticals producers can risk their license to operate
- 3 Inability to perform treasury operations can seriously affect liquidity
- 4 Default of meeting downstream supply contracts with customers can lead to significant business losses and penalties
- 5 Financial damages caused by loss of sales and actions for recovery of normal operation can amount to 10% or more impact on EBIT

Our Framework, Approach and Results



We consider the entire value chain (end-to-end analysis) and deliver a 360° view on value chain enablers. We determine and classify IT and site criticalities as well as business impacts in order to develop integrated Business Continuity plans and concepts along the value chain. Relevant suppliers, business partners and stakeholders are integrated in the analysis.

Typical work products

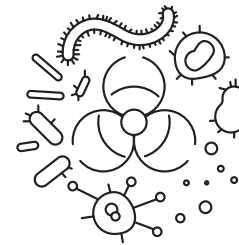
- Value Stream Maps visualize the flow of the product or service from initiation to customer delivery and its key contributors
- Mapping and capability assessment of major IT-systems along the value chain creates transparency of critical IT-dependencies and possible options for Business Continuity
- Analysis of digital solutions which are integrated in particular value chain processes or interfaces highlight potential risks beyond the major IT-systems that are in focus
- Enabling Function Assessment evaluates the business impact of critical functions like accounts payable, treasury, facility services, regulatory reporting

Our Value Chain Resilience Framework is capable to cover potential threats of:

Natural catastrophes



Pandemics



Man-made disasters



Success Factors

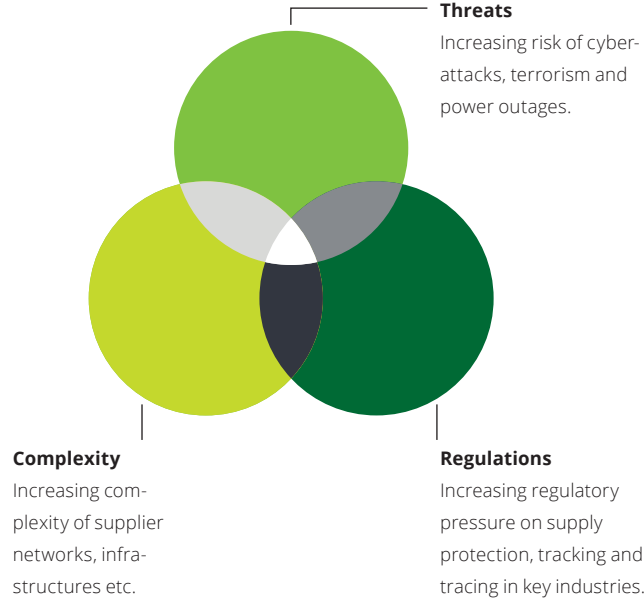
- End-to-end view: effective Business Continuity activities consider all steps and organizations along the value chain
- Communication strategy and standards are essential for broad buy-in and also for protecting sensitive information
- Cross-functional involvement and buy-in: Business Continuity activities taking an end-to-end view need contribution from the whole organization
- Transparency of IT capabilities: it is essential to study the disaster impact on the IT-landscape and its consequences for the value chain
- Consideration of the digital agenda: Business Continuity must understand how digitalization and robotics will change the value chain and integrate these in an end-to-end view



Value Chain Resilience
Taking Business Continuity Management to the next level

Value Chain Resilience

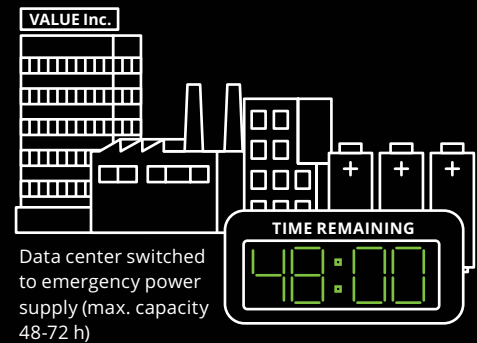
Global business and value chain interruptions are the corporate risk #1



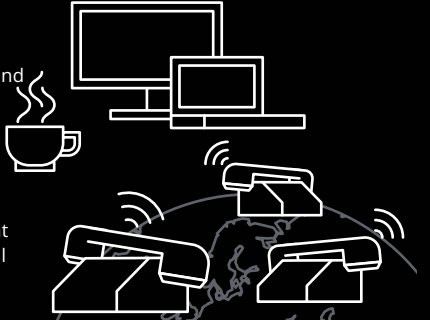
A Blackout Experience Journey

Day 1

10:00
Power Outage in the wider area of VALUE Inc. headquarter

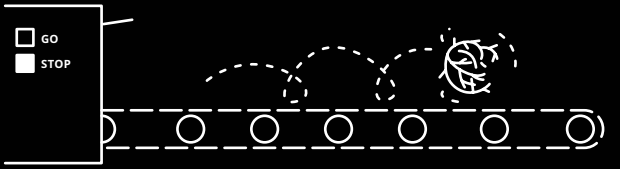


10:20
Office computers are down, sales and other activities come to standstill



10:30
Activation of the crisis management plan including communication to all global sites

11:00
Local production interrupted due to the power outage



11:40
Central country warehouse 200 km away is down, too. Delivery to wholesalers has stopped



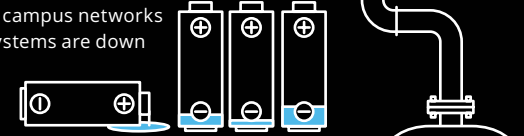
12:15
First estimates for power outage dimensions and time to recover: at least until the next morning



12:30
Most staff members go home



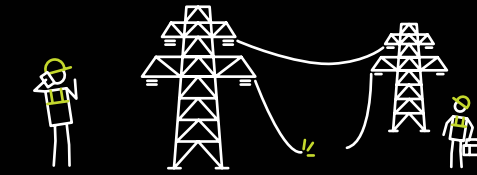
13:55
Battery buffered campus networks and shop floor systems are down



14:00
Where possible emptying of vessels and tubes to reduce risk of uncontrolled chemical reactions



18:00
Grid operators report that more time is needed to fix the blackout



20:00
Increased looting and acts of violence. People should not leave home

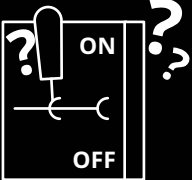


Day 2

09:00
Grid operators are still working on the problem



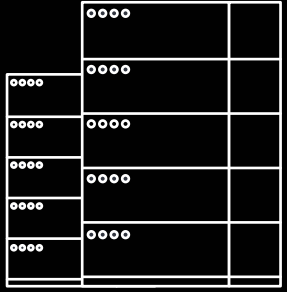
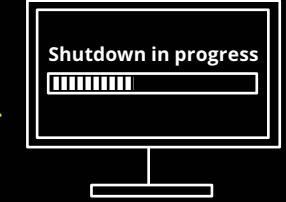
14:00
Decision needed for data center operations to avoid uncontrolled stop of transaction processing



16:00
Decision to stop global transaction processing and shut down systems in the data center

20:00
Shutdown of IT-systems in full process, global processes have come to standstill

Even if electricity would come back in the meantime the process is irreversible.



Day 3

06:00
All systems and business operations are down

VALUE Inc. is out of service

