

By **Deloitte.**

# Sustainability for the bottom line™

Today's global business leaders understand that environmental and social factors can improve your top and bottom line performance. Whether you are a sustainability leader interested in designing the next great sustainable product or service, or a company wishing to reduce your energy use and environmental impact, the experienced team of sustainability consultants providing DOMANI™ by Deloitte services will work closely with you to help develop a customized, inclusive sustainability strategy. Practitioners providing DOMANI by Deloitte integrated solutions have helped businesses all over the world.

Deloitte offers sophisticated sustainability solutions and approaches each project with a highly individualized evaluation. Using this process, we can efficiently help clients identify potential areas for improvement, then facilitate the most cost-effective solutions possible.

## Environmental and social performance

Our holistic approach begins with an inclusive assessment of two key aspects of sustainability performance: our clients' Environmental Performance (factors such as sourcing, supply chain, manufacturing, distribution, resource use/footprint and downstream usage/disposal) and its Social Performance (factors such as labor practices,

human rights issues and product responsibility). Once we have assisted with the identification of key needs in these areas, our industry-leading team works closely with each client to create a customized strategy for the integration of sustainability practices into both business processes and corporate culture—with a strong focus on improving the bottom line. This strategy is designed to impact your company's economic performance, both in tangible and intangible ways. Clients utilizing DOMANI by Deloitte services have experienced:

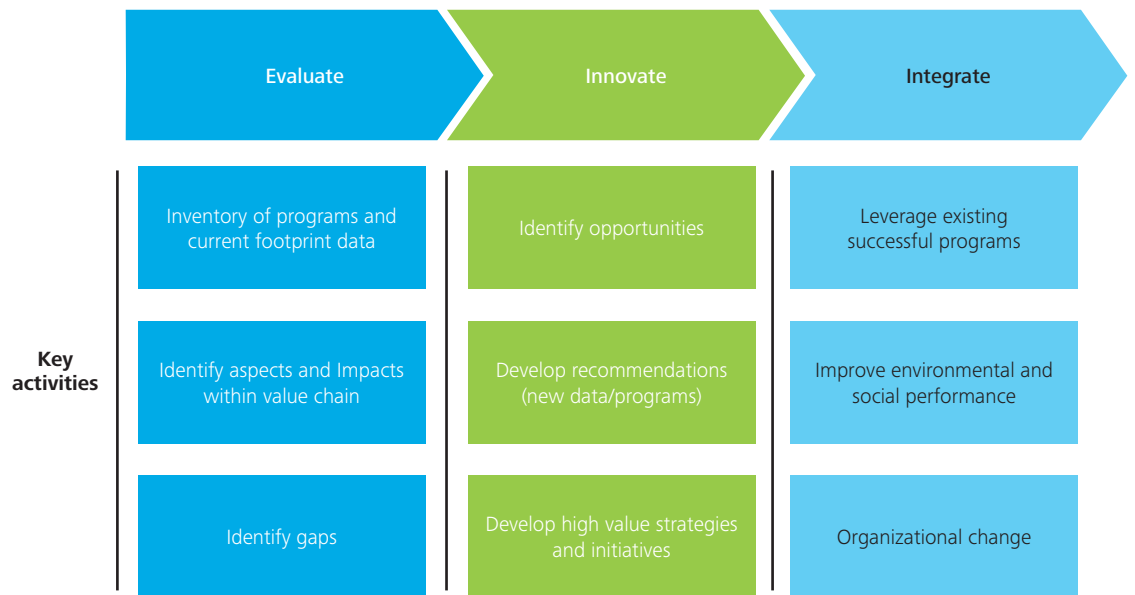
- Increased revenue
- Reduced operating costs
- Diminished risk
- Increased brand value

## Our approach

The DOMANI by Deloitte services are provided by a team of industry-leading specialists who take an inclusive approach to sustainability consulting—and Deloitte continues to increase our client service offerings by utilizing both established and emerging technologies. While each client, project and situation is different, we have developed a demonstrated process for discovery and deployment of our customized programs: Evaluate, Innovate and Integrate.

As used in this document, "Deloitte" means Deloitte Consulting LLP, Deloitte Financial Advisory Services LLP, Deloitte & Touche LLP and Deloitte Tax LLP, which are separate subsidiaries of Deloitte LLP. Please see [www.deloitte.com/us/about](http://www.deloitte.com/us/about) for a detailed description of the legal structure of Deloitte LLP and its subsidiaries. All services are provided within the rules and regulations applicable to the practice of public accounting.





**Our services**

Deloitte’s role is both advisory and technical. DOMANI by Deloitte services are offered by a multidisciplinary team of industry-leading specialists dedicated to searching beyond the established answers to provide innovative solutions. Our services include:

- **Sustainability strategy, reporting, branding and green products:** The DOMANI by Deloitte approach is known for helping our clients move beyond mere compliance to *high-performance* profitability. We specialize in helping companies identify unique business opportunities to drive top line performance.
- **Resource reduction – Energy efficiency, water management and material use:** Deloitte works closely with each client to help craft highly personalized programs, leveraging our time-tested, pragmatic experience in lean manufacturing, energy and resource efficiency, renewable energy technologies and quality management. These services typically assist companies in achieving their goals of reduced impact on the environment, measurable cost savings and a competitive advantage in an increasingly aggressive market.

- **Sustainable development – Sustainable buildings and brownfields redevelopment:** In today’s business environment, sustainable development can be one of the smartest financial moves your enterprise can make. To accomplish your objectives, you may need more than high-performance building design, but rather an inclusive, fully integrated redevelopment strategy – a “brown to green™” approach. We have identified distinct design opportunities that can help you make a measurable impact on your project—with the goal of enhancing the performance of your development, reducing its environmental footprint and increasing market value.
- **Climate change + carbon:** Rising energy costs are driving organizations to be more efficient with energy use and related greenhouse gas emissions. At the same time, the growing asset value of carbon is creating opportunities for businesses to generate additional revenue streams. Our multidisciplinary team of industry specialists can help your company manage its contribution to climate change proactively with a customized program designed to drive environmental and financial performance.

### Our team

DOMANI by Deloitte services are provided by creative thought leaders whose capabilities cross an impressive range of industries—and whose experience spans the globe. Their educational background includes earth and environmental sciences; environmental engineering; economics; sustainable development and compliance/public policy. Their areas of specialty include:

- Sustainability strategy development and implementation
- Sustainability reporting (CDP, CDP water disclosure and GRI)
- Energy efficiency
- Renewable energy evaluation

- Water strategy and management
- Climate change strategy development and implementation
- Climate change/carbon voluntary markets and regulatory compliance
- Carbon baseline and mitigation
- Climate change adaptation strategies
- Sustainability metrics and performance indicators
- Response to major retailers' sustainability initiatives
- Sustainable packaging
- Brownfields and sustainable development program management
- Green building/LEED programs

### Contact us

#### Will Sarni

Deloitte Consulting LLP

[wsarni@deloitte.com](mailto:wsarni@deloitte.com)

+1 303 294 4217

#### Chris Park

Deloitte Consulting LLP

[chrpark@deloitte.com](mailto:chrpark@deloitte.com)

+1 617 437 2215

#### Lee Solomon

Deloitte Consulting LLP

[leesolomon@deloitte.com](mailto:leesolomon@deloitte.com)

+1 703 251 4162

Learn more about Deloitte's Sustainability & Climate Change services: [www.deloitte.com/us/Sustainability](http://www.deloitte.com/us/Sustainability)