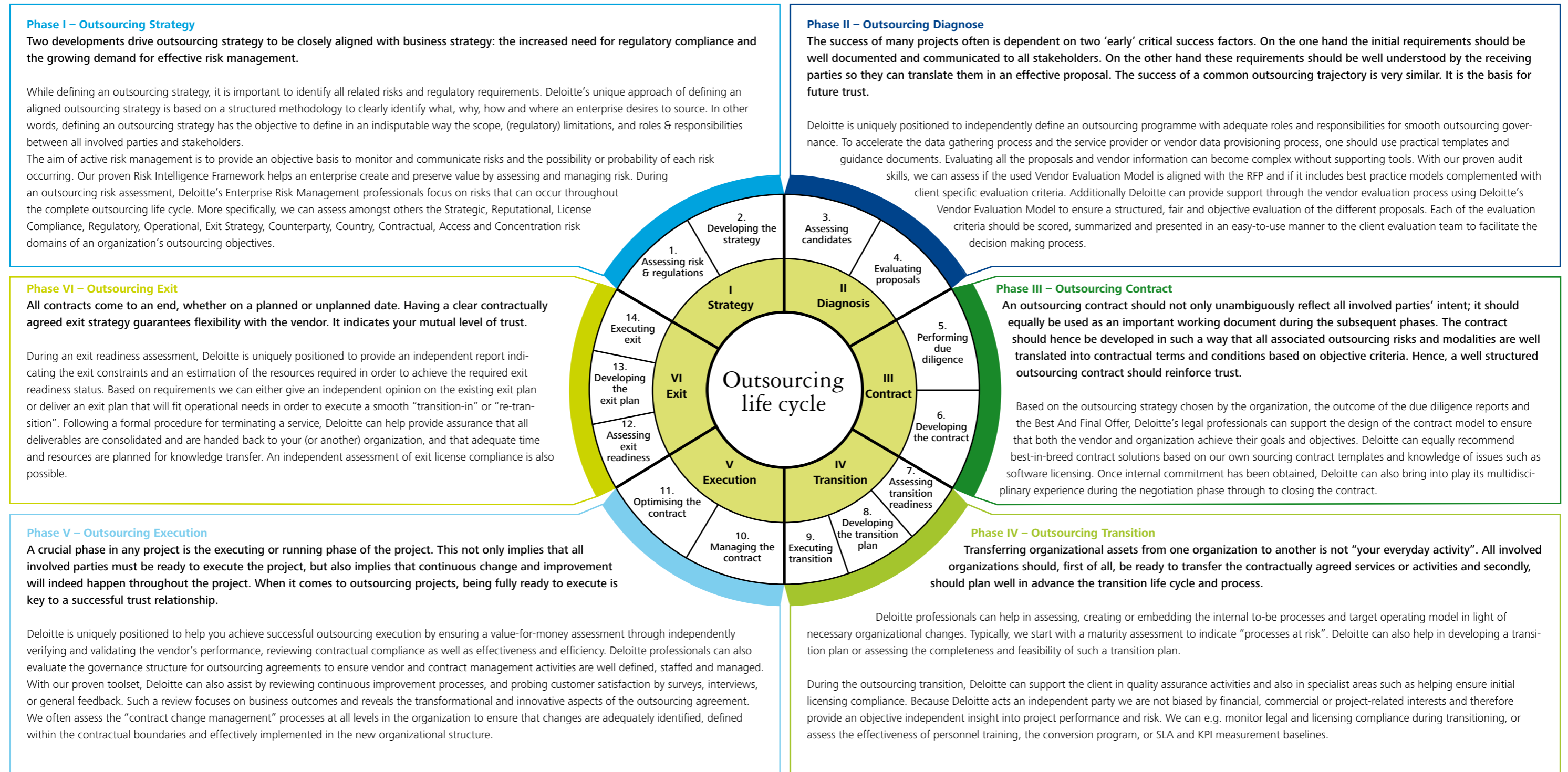


Outsourcing Risk
Advisory Services
*A matter of end-
to-end control and
mutual trust*



Outsourcing Risk Advisory Services

The increasing trend to outsourcing activities entails a number of important decisions. It equally requires the management of a large variety of issues. Active risk management can substantially reduce internal, external, and market performance risk exposure while allowing the organization to obtain the main benefits of any outsourcing initiative. Deloitte is uniquely positioned to assist your organization in managing and mitigating these risks throughout the complete outsourcing life cycle. Our Outsourcing Risk Advisory Services offers a phased methodology in which separate workstreams provide a structured approach for ensuring end-to-end outsourcing control.



Contact details

Deloitte Audit & Enterprise Risk Services

Berkenlaan 8B
1831 Diegem
Belgium
www.deloitte.be

Erik Luysterborg

Partner
Tel. + 32 2 800 23 36
Fax + 32 2 800 24 01
Mobile + 32 497 51 53 95

Johan Van Grieken

Director
Tel. + 32 2 800 24 53
Fax + 32 2 800 24 01
Mobile + 32 496 57 49 40

Deloitte provides audit, tax, consulting, and financial advisory services to public and private clients spanning multiple industries. With a globally connected network of member firms in 140 countries, Deloitte brings world-class capabilities and deep local expertise to help clients succeed wherever they operate. Deloitte's 165,000 professionals are committed to becoming the standard of excellence.

Deloitte's professionals are unified by a collaborative culture that fosters integrity, outstanding value to markets and clients, commitment to each other, and strength from cultural diversity. They enjoy an environment of continuous learning, challenging experiences, and enriching career opportunities. Deloitte's professionals are dedicated to strengthening corporate responsibility, building public trust, and making a positive impact in their communities.

Deloitte refers to one or more of Deloitte Touche Tohmatsu, a Swiss Verein, and its network of member firms, each of which is a legally separate and independent entity. Please see www.deloitte.com/about for a detailed description of the legal structure of Deloitte Touche Tohmatsu and its member firms.