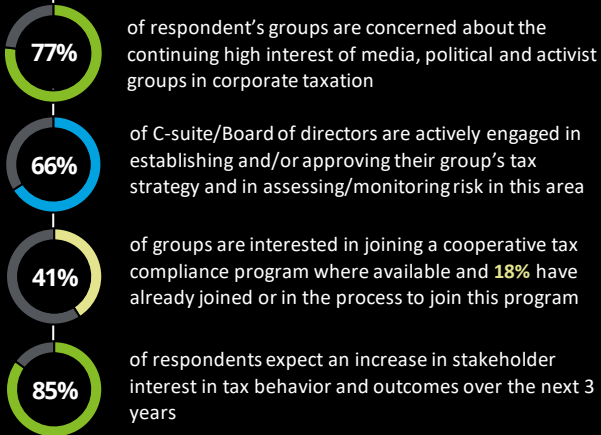


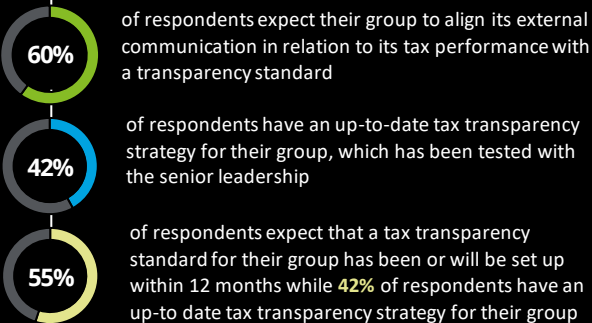
Deloitte's 9th annual multinational survey 2022 – at a glance



Tax governance remains high on the Board agenda



Voluntary tax transparency standards are increasingly being adopted by businesses

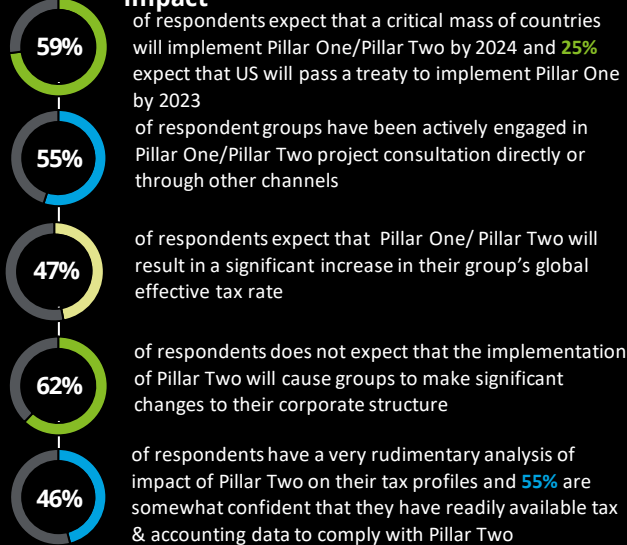


Discover Deloitte tax@hand

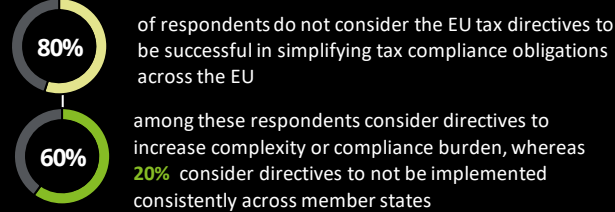
today for Deloitte tax@hand—a global, personalized tax news and information resource designed for tax professionals.
View on your computer or mobile device:
<https://www.taxathand.com>



Pillar One/ Pillar Two remains a 'hot topic' and businesses are preparing for the impact



EU tax directives not expected to help simplify tax compliance obligations



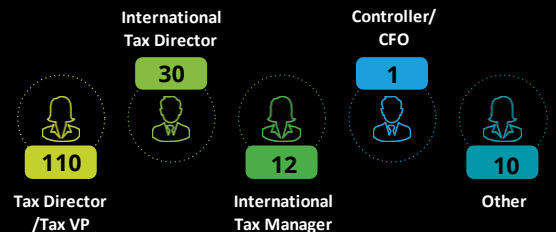
Do you want to be more confident in the rapidly changing tax environment?

Visit www.Deloitte.com/BEPS

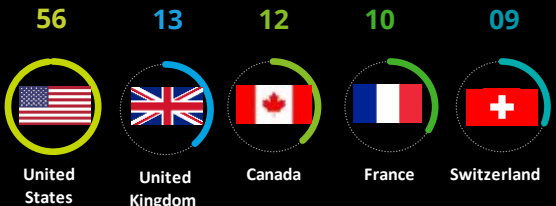
Total 2022 respondents



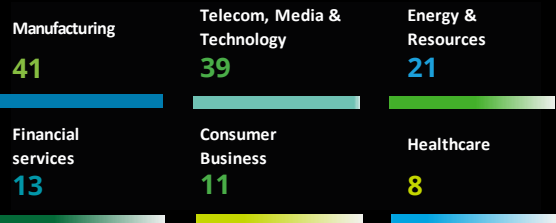
Respondent's role



Top 5 respondents by country



Top 5 responses by industry



Deloitte refers to one or more of Deloitte Touche Tohmatsu Limited ("DTTL"), its global network of member firms, and their related entities (collectively, the "Deloitte organization"). DTTL (also referred to as "Deloitte Global") and each of its member firms and related entities are legally separate and independent entities, which cannot obligate or bind each other in respect of third parties. DTTL and each DTTL member firm and related entity is liable only for its own acts and omissions, and not those of each other. DTTL does not provide services to clients. Please see www.deloitte.com/about to learn more.

Deloitte is a leading global provider of audit and assurance, consulting, financial advisory, risk advisory, tax and related services. Our global network of member firms and related entities in more than 150 countries and territories (collectively, the "Deloitte organization") serves four out of five Fortune Global 500® companies. Learn how Deloitte's approximately 330,000 people make an impact that matters at www.deloitte.com.

This communication contains general information only, and none of Deloitte Touche Tohmatsu Limited ("DTTL"), its global network of member firms or their related entities (collectively, the "Deloitte organization") is, by means of this communication, rendering professional advice or services. Before making any decision or taking any action that may affect your finances or your business, you should consult a qualified professional adviser.

No representations, warranties or undertakings (express or implied) are given as to the accuracy or completeness of the information in this communication, and none of DTTL, its member firms, related entities, employees or agents shall be liable or responsible for any loss or damage whatsoever arising directly or indirectly in connection with any person relying on this communication. DTTL and each of its member firms, and their related entities, are legally separate and independent entities.